

CLEVELAND NATURALISTS'

FIELD CLUB



RECORD OF PROCEEDINGS

Volume 5 Part 1

Spring 1991

CONTENTS

Recent Sightings and Casual Notes
CNFC Recording Events and Workshop Programme 1991
The Forming of a Field Study Group Within the CNFC
Additions to Records of Fungi In Cleveland
Recent Sightings and Casual Notes
CNFC Recording Events and Workshop Programme 1991
The Forming of a Field Study Group Within the CNFC
Additions to Records of Fungi In Cleveland

CLEVELAND NATURALISTS'
FIELD CLUB
111th SESSION 1991-1992

OFFICERS

President:

Mrs J.M. Williams
11, Kedleston Close
Stockton on Tees.

Secretary:

Mrs J.M. Williams
11 Kedleston Close
Stockton on Tees.

Programme Secretaries:

Misses J.E. Bradbury & N. Pagdin
21, North Close
Elwick
Hartlepool.

Treasurer;

Miss M. Gent
42, North Road
Stokesley.

Committee Members:

J. Blackburn K. Houghton M. Yates

Records sub-committee:

A.Weir, M Birtle
P.Wood, D Fryer, J. Blackburn
M. Hallam, V. Jones

Representatives:

I. C.Lawrence (CWT)
J. Blackburn (YNU)
M. Birtle (NNU)

EDITORIAL

It is perhaps fitting that, as the Cleveland Naturalist's Field Club enters its 111th year in 1991, we should be celebrating its long history of natural history recording through the re-establishment of the "Proceedings". In the early days of the club this publication formed the focus of information dissemination and was published continuously from 1881 until 1932. Despite the enormous changes in land use which have occurred in the last 60 years, and indeed the change in geographical area brought about by the fairly recent formation of Cleveland County, many of the old records published in the Proceedings still hold true and even those species which have disappeared or contracted in range are of value in providing useful base line data for modern day surveys.

Early Field Club notes illustrate a very different way of life from that of the present day with members frequently travelling to outings by train and occasionally, as in the 1899 outing to Weary Bank Woods, "by brake". For indoor meetings there was of course no slide projector although a report in the 1899 Proceedings draws our attention to the kindness of the Cleveland Camera Club in providing " Gas for the lantern".

Undoubtedly there was a greater abundance of wildlife in the area than at the present time with the diversity of bird life around the mouth of the estuary being particularly apparent. Club members recorded the flora and fauna of sites about to vanish under the new industrial and urban development and excavations for iron works and buildings brought to light many interesting finds such as axe heads, mammoth tusks, skeletons and a Pleisocene skull!

One might ask how we know so much about the events and sightings of the early days of the Club and the response has to be because the information was published. The changes in flora and fauna during the last 60 years however, is a much greyer area and from a history of science point of view a much duller era. Surely we owe it to the present population and future generations of Clevelanders to document our outings and records through the re-establishment of the Proceedings of the Cleveland Naturalist's Field Club - This journal represents the beginnings of such an exercise.

The publication of this first volume owes much to the initiative and endeavour of the Records sub-committee and in particular the following-

Alex Weir, Malcolm Birtle, Ian Lawrence, Pat Wood, Darroll Fryer, Maurice Hallam, John Blackburn and Vincent Jones

THEN AND NOW

Following an upsurge in interest in geology and the natural sciences, resulting from a series of lectures on physical geography, the Cleveland Naturalists' Field Club and University Extension Society held its Inaugural meeting on 4th April 1881. The meeting took place at the Philosophical Society in Corporation Road, Middlesbrough and was presided over by Dr. W.Y. Veltch. The objectives of the Club were to be the practical study of natural history, science, archeology and antiquities in the Cleveland area, which then included a large part of the North York Moors.

Invitations to the Inaugural meeting had been confined to existing members of the Philosophical Society, and, in order to offer membership to others, the meeting was adjourned and an invitation to all interested was inserted in the local press. About 70 local people responded to the advertisement giving the organisation, which was to become the Cleveland Naturalists Field Club, in 1885, the early support required to become established.

From its earliest beginnings the members of the Club faithfully accumulated and published records on natural history etc. through the regular appearance of the "Proceedings". These appeared continually until 1932 when, for uncertain reasons, nothing was published. Unfortunately the events of the last 58 years have gone unrecorded excepting the centenary issue produced by the Club in 1981.

Early in the life of the Club, in association with the Philosophical Society, a movement for the establishment of a local Museum was initiated, this resulted in the opening in 1904, of the Dorman Memorial Museum, the gift of Sir Arthur Dorman, in memory of his son.

Several distinguished members of the Club made valuable contributions to the successful organisation and running of the Museum including Frank Elgee, a well known local naturalist and archaeologist. Elgee Memorial Lectures are still an annual event, held in his honour.

Between 1939 and 1961 the Club maintained close contact with the Museum, holding its indoor meetings in the Nelson Room, which incidentally, still houses a fine collection of birds and their eggs. Post 1961 meetings have taken place at the University of Leeds Centre in Harrow Road, Middlesbrough.

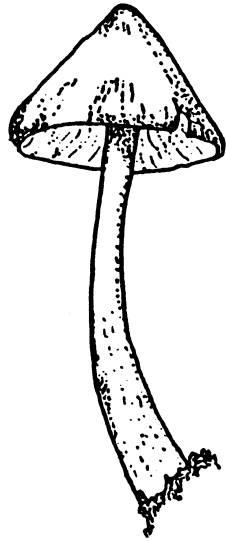
Our Club has been fortunate in the past to count among its members many who became authorities in their own field of specialisation, and some whose names became known far beyond the confines of Cleveland.

Today excursions to areas of natural beauty and interest are still an essential part of the annual programme and in 1991 this will be extended to include more

specialised workshops and recording days. These will be primarily aimed at neglected groups of organisms and threatened sites with insufficient data. A full programme of events for 1991 appears on page 37 of these Proceedings.

It may be appropriate to stress here that one does not need to be an expert in any branch of natural history to become a member, or to take part in specialised field recording work. Additionally this publication is not a closed house for scientific records and casual sightings of local wildlife etc. would be gratefully received.

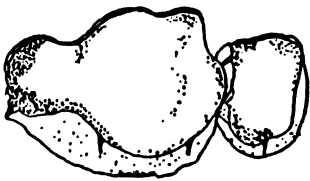
It is hoped that these Proceedings will once again become the focus of attention for Club members and visiting naturalists, and in order for them to become successful the editorial panel require items of a sufficiently high standard for publication, we hope that these will be forthcoming from the more active members within the Club and from other workers in the field.



*Entoloma
porphyrophaeum*



*Xylaria
polymorpha*



Aleuria aurantia



*Morechella
esculenta*

RECORDS OF FUNGI IN CLEVELAND.

Compiled by Alex Weir BSc (Hons)

Introduction

The region known as Cleveland is situated in the North East of England where it encompasses an area of approximately 585.5 km². Although a small County with large industrial complexes and urban conurbations the diverse geological deposits found in the area, when considered along with the enormous impact of man, both in the destruction and creation of habitats, results in an extremely rich and varied ecological resource. The flora and vegetation are, to a large extent, already documented in the recently published or forthcoming works by (Graham, 1988), (Weir and Allinson, 1988) and (Lawrence in press).

The fungus flora, on the other hand, has been largely ignored with occasional lists appearing in Yorkshire Naturalist Union (YNU) publications.

In an attempt to begin to redress this unsatisfactory state of affairs I have, over the last three years, undertaken to record the occurrence of fungi throughout the County. The following list summarises the results of this initial survey and also includes recent records from Mr. A. W. Legg (AWL) of Darlington who has collected extensively in the Loftus area, YNU records (1972, 1977, 1984) appearing in "The Naturalist", all from Grinkle Park, have also been added and distributional tetrad data is given where possible. It must be clearly stated here that this list represents nothing more than a preliminary account of the fungus flora of Cleveland (probably less than 10% of total flora). Comparisons with published accounts from the Hebrides (Dennis R.W.G., 1986) and Warwickshire (Clark M. C., 1980) will give support to this statement.

It is hoped that, although incomplete, this list will stimulate greater interest in the local fungus flora and that sufficient interested persons will be forthcoming in order to help with the detailed work involved in the production of a fungus flora for the County. This could probably be best achieved through the formation of a Cleveland Fungus Study Group which could exist as a sub committee of the Cleveland Naturalist's Field Club.

I am indebted to Mr. A.W. Legg for information used in this article and for help with the determination of some critical species.

ARRANGEMENT OF SPECIES INFORMATION

Fungi take many widely differing forms and have to be divided, for the purposes of study and classification into a number of well-defined groups.

MYXOMYCOTA

Myxomycetes

EUMYCOTA

Mastigomycotina and Zygomycotina ("Phycomycetes")

Ascomycotina (Ascomycetes)

- Discomycetes
- Loculoascomycetes
- Plectomycetes
- Pyrenoroycetes

Basidiomycotina (Basidiomycetes)

- Hymenomycetes
- Aphyllophorales
- Tremellales and Other Orders
- Gasteromycetes
- Teliomycetes

Deuteromycotina (Fungi Imperfecti)

- Hyphomycetes
- Coelomycetes

MYXOMYCOTA

Myxomycetes - These are true slime moulds, usually considered to be intermediate between the true fungi and the animal kingdom. Usually, however, studied by mycologists and treated as part of the fungus flora.

FULIGO Haller

Fuligo septica (L.) Wiqg.
Grinkle Park (YNU).

LYCOGALA Mich.

Lycogala epidendrum (L) Fr.
On sawdust heaps. Burn Wood, Longnewton (31X)

MUCILAGO Mich

Mucilago crustacea Wiqg.
On bases of stems and leaves of various grasses, car park at Newton under Roseberry (51R), Eston Woods (51N) and Aislaby Bank, Yarro (41B).

PHYSARUM Pers.

Physarum leucophaeum Fr.
On leaves of dead ivy (*Hedera helix*), Kilton Woods (71D).

EUMYCOTA

Mastigomycotina and Zygomycotina ("Phycomycetes") - The minute size and delicate nature of these species mean that they have been almost totally neglected to date.

ZYGOMYCOTINA

Mucorales

PHYCOMYCES Kunze

Phycomyces nitens (C. Aq.) Kunze ex Fr.
Around base of septic tank, Grinkle Park (YNU).

PILAIRA v. Tiegh.

Pilaira anomala Schroet
Cultivated on hare dung, Coatham Dunes (AWL).

SPINELLUS v. Tiegh.

Spinellus fusiger (Link) v. Tiegh.
Hyperparasite recorded from *Mycena* sp., Lazenby Bank (51Z).

ASCOMYCOTINA (Ascomycetes)

A very numerous group of mainly small species many of which are only found by diligent search.

(1) Discomycetes

ALEURIA Fuckel.

Aleuria aurantia (Fr.) Fuckel.

On bare, damp soil, Burn Wood, Longnewton (31X).

ANTHRACOBIA Boud.

Anthracobia macrocystis (Cooke) Bond.

On fire site, Kilton Woods (71D), Loftus Warren (AWL).

Anthracobia maurilabra (Cooke) Bond.

On old fire sites, Kilton Woods (71D), Burn Wood, Longnewton (31X).

Anthracobia melaloma (Alb. & Schw. ex Fr.) Bond.

On fired area, Loftus Warren (AWL).

ASCOBOLUS

Ascobolus furfuraceus Pers. ex Fr.

On cow dung, Seaton Common (52J).

ASCOCORYNE Groves and Wilson

Ascocoryne cylichnium (Tul.) Korf.

On dead willow (*Salix* sp.), Billingham Bottoms (42L).

Ascocoryne sarcoides (Jacquin ex Gray) Groves & Wilson

On dead ash (*Fraxinus excelsior*), Marton West Beck (51C).

BISPORELLA Sacc.

Bisporrella citrina (Batsch ex Fr.) Korf and Carpenter.

On dead branches, Kilton Woods (71D).

BULGARIA Fr.

Bulgaria inquinans Fr.

Kilton Woods (AWL).

CHLOROSPENIUM Fr.

Chlorosplenium aeruginascens (Nyl.) Karst.

On rotten branches, Saitburn Gill SSSI (62Q), Kilton Woods (71D).

COPROBIA Bond.

Coprobria granulata (Bull. ex Fr.) Bond.

Common on cow dung, Seaton Common (52J), nr. Bank Pasture Wood (51Y).

DASYSCYPHUS Gray.

Dasyscyphus mollissimus (Lasch) Dennis

On hogweed (*Heracleum*) stems. South Loftus (AWL).

Dasyscyphus virgineus Gray.
Common and widespread on plant debris.

GEOGLOSSUM Pers. ex Fr.
Geoglossum cookeianum Nannf.
Abundant during November 1988 at the North Gare (52J), a single fruiting body at Dorman's Pool (52B).

HELVELLA L. ex St. Amans.
Helvella crispa Fr.
Grassy pathside, Thorpe Wood LNR (42C).

HYMENOSCYPHUS Gray.
Hymenoscyphus fagineus (Pers. ex Fr.) Dennis
On beech (*Fagus*) mast, Thorpe Wood LNR (42C) (AWL).
Hymenoscyphus fructigenus (Bull ex Fr.) Gray
On old hazelnut shell, Kilton Woods (71D).
Hymenoscyphus scutula (Pers. ex Fr.) Phill.
On dead herbaceous stems, Kilton Woods (71D), on dead hogweed (*Heracleum sphondylium*), ICI Billingham (42Q).

MELASTIZA Bond.
Melastiza chateri (W. G. Smith) Bond.
On bare soil, Thorpe Wood LNR (42C), and Ropner Park, Stockton (41J).

MORCHELLA Pers.
Morchella esculenta Pers. ex St. Amans.
On sandy soil, Gravel Hole Nature Reserve (42L), Greenabella Marshes.

ORBILIA Fr.
Orbilialia alnea Velen.
Upper surface of fallen branch, Kilton Woods (AWL).

PEZIZA Wilid.
Peziza ammophila Durieu. & Mont.
At base of marram grass (*Ammophila arenaria*), Coatham Dunes (AWL @ Kew).
Peziza echinospora Karst.
On fire site, Kilton Woods (71D).
Peziza emileia Cooke.
By pathside, Kilton Woods (71D).
Peziza micropus Pers.
On sawdust, Burn Wood, Longnewton (31X).
Peziza petersii Berk. & Curt.
On fire site, Burn Wood, Longnewton (31X).
Peziza praetervisita Bres.
On burnt area, Loftus Warren (AWL).

PYRONEMA Carus

Pyronema domesticum (Sow ex Fr.) Sacc.

On old fire sites, Kilton Woods (71D), Eston Moor (51N).

RHYTISMA Fr.

Rhytisma acerinum (Pers ex St. Amans) Fr.

Common and widespread on sycamore (*Acer pseudoplatanus*) leaves.

RUTSTROEMIA Karst.

Rutstroemia firma (Pers.) Karst.

On oak (*Quercus*) twig, Handale (AWL).

SCUTELLINIA (Cooke) Lamb,

Scutellinia asperior (Nyl.) Dennis

On mossy soil and bare ground, Kilton Woods (AWL).

Scutellinia subhirtella Svrcek

Damp ground with liverworts, Kilton Woods (71D).

Scutellinia umbrarum (Fr.) Lamb.

Bare muddy ground by stream, Kilton Woods (71D).

TARZETTA Lamb.

Tarzetta catinus (Holmskjold ex Fr.) Korf & J.K. Rodgers

Under beech (*Fagus*), Wilton Woods (AWL).

Tarzetta cupularis (L. ex Fr.) Lamb.

On bare soil, Thorpe Wood LNR (42C).

(2) Loculoascomycetes

RHOPOGRAPHIS Nits.

Rhopographis filicinus (Fr.) Nits.

Fairly frequent on bracken (*Pteridium*) throughout the County.

(3) Plectomycetes

ERYSIPHE Hedw. ex Merat

Erysiphe circaea L. Junell

On leaves of enchanter's nightshade (*Circaea lutetiana*), Burn Wood, Longnewton (31X).

Erysiphe depressa (Wallr.) Schlect.

On leaves of burdock (*Arctium* sp.). Burn Wood, Longnewton (31X).

PODOSPHAERA Kunze

Podosphaera tridactyla (Wallr.) de By.

On living leaves of blackthorn (*Prunus spinosa*) by car park, Kilton Woods (71D).

(4) Pyrenomycetes

APIOCREA Syd.

Apiocrea chrysosperna (Tul.) Syd.

Hyperparasite on old Boletaceae, Eston Moor Woods (51T).

CHAETOMIUM Kunze ex Fr.

Chaetomium elatum Kunze & Schroidt ex Fr.

Incubated on hare dung, Coatham Dunes (AWL).

CHAETOSPHAERELLA Muller & Booth

Chaetosphaerella phaeostroma (Dur.& Mont.) Muller & Booth

Wilton Woods (AWL).

CLAVICEPS Tul.

Claviceps purpurea (Fr.) Tul.

On unidentified grasses, Coatham Dunes (AWL).

DALDINIA Ces. & de Not.

Daldinia concentrica (Bolt. ex Fr.) Ces. & de Not.

Common and widespread on ash (*Fraxinus excelsior*).

DIATRYPE

Diatrype disciformis (Hoffm. ex Fr.) Fr.

On dead beech (*Fagus*) branch, Lazenby Bank Woods (51U).

HYPOXYLON Bull. ex Fr.

Hypoxylon fragiforme (Pers. ex Fr.) Kickx

Liverton Mines (AWL).

LOPHIOSTOMA (Fr.) Ces. & de Not.

Lophiostoma caulium (Fr.) Ces. & de Not.

Base of dead stems of couch grass (*Elymus* sp.), Coatham Dunes (AWL).

NECTRIA Fr.

Nectria cinnabarina (Tode) Fr.

Common everywhere on dead twigs.

Nectria peziza (Tode) Fr.

On sawn wood, Burn Wood, Longnewton (31X).

NECTRIOPSIS Maire

Nectriopsis violacea (Schmidt. in Fr.) Maire

On the myxomycete (*Fuligo septica*), Grinkle Park (YNU).

SCHIZOTHECIUM Corda

Schizothecium tetrasporum (Wint.) Lundq.

Cultivated from hare dung, Coatham Dunes (AWL).

SORDARIA Ces. & de Not.

Sordaria fimicola (Rob.) Ces. & de Not.

Cultivated from hare dung, Coatham Dunes (AWL) and North Gre Sands (52J).

Sordaria lappae Potebn.

Cultivated from hare dung, Coatham Dunes (AWL) and North Gare Sands (52J).

XYLARIA Hill

Xylaria carpophila Pers.

On fallen beech (*Fagus*) husks, Thorpe Wood LNR (42C), Hagg Beck Woods (61X).

Xylaria hypoxylon (L.) Grev.

Common and widespread on dead wood.

Xylaria polymorpha (Pers.) Grev.

On dead stumps, Thorpe Wood LNR (42C).

BASIDIOMYCOTINA (Basidiomycetes)

(1) Hymenomycetes

AGARICUS L.

Agaricus arvensis Schaeff. ex Seer.

Common at Doman' s Pool (52B), Teesmouth.

Agaricus bernardii Quel.

One record from coastal grassland between Marske and Redcar (62G).

Agaricus bisporus (J. Lange) Pilat

On disturbed ground, Poplar Farm (51Y).

Agaricus bresadolianus Bohus

One record from coastal grassland, North Gare Dunes (52J).

Agaricus campestris L.

Widespread and common in grasslands throughout the County.

Agaricus xanthoderms Genevier

One autumn record in grassland near Pinchinthorpe.

AGROCYBE Fayod

Agrocybe erebia (Fr.) Kuhner

A single record from pathside, Kilton Woods (71D)

AMANITA Pers.

Amanita excelsa (Fr.) Kummer

Loftus Warren Plantation (AWL), Grinkle Park (YNU).

Amanita inaurata Seer.

Loftus Cemetery and N2 7116 (AWL).

Amanita citrina Schaeff. ex Gray

Woodland edge. Park Wood (51Y).

Amanita muscaria (L.) Hook.

Widespread and fairly common, especially under birch (Betula).

Amanita rubescens (Fr.) S. F. Gray

Widespread and fairly common throughout.

Amanita vaginata (Bull.) Vitt.

Eston Woods (SIT) and Loftus Warren (AWL).

ARMILLARIA (Fr.) Kummer

Armillaria mellea (Vahl) Kummer

Very common and widespread throughout the County.

BOLBITIUS Fr.

Bolbitius vitellinus (Pers.) Fr.

Common in grazed pastures and along roadsides as at Normanby Brickworks (51N).

BOLETUS Dill. ex L.

Boletus badius Fr.

Mixed woodland, Eston Moor Woods (51T) and Loftus Warren (AWL).

Boletus chrysenteron Bull.

Eston Moor Woods (51T) and Burn Wood, Longnewton (31X).

Boletus edulis Bull.

infrequently found although probably fairly common e.g. Eston Moor Woods (51T).

Boletus luridus Schaeff. ex Fr.

Loftus Cemetery (AWL).

Boletus reticulatus Sch.

A single specimen from birch (Betula) woods, Eston Moor (51T).

Boletus subtomentosus L. ex Fr.

Woodland edge, Park Wood (51Y), Handale (AWL).

CANTHARELLULA Sing.

Cantharellula cyathiformis (Bull.) Sing.

Wilton Woods (512), Thorpe Wood LNR (42C) and Park Wood (51Y).

CANTHARELLUS Adanson ex Fr.

Cantharellus cibarius Fr.

Handale (AWL).

Cantharellus cinereus Pers. ex Fr.

Liverton Mines (AWL).

CLITOCYBE (Fr.) Kummer

Clitocybe brumalis (Fr.) Quel.

A single record amongst sand dunes at North Gare Sands (52J).

Clitocybe dealbata (Sow. ex Fr.) Kummer
Common at North Gare Sands (52J).

Clitocybe bicolor (Pers.) J. Lange
Under conifers, Thorpe Wood LNR (42C).

Clitocybe flaccida (Sow. ex Fr.) Kummer
Thorpe Wood LNR (42C) and Eston Woods (51N).

Clitocybe fragrans (Sow.) Kummer
A single record from Thorpe Wood LNR (42C).

Clitocybe houghtonii (Berk. & BR.) Dennis
Coastal grassland. North Gare Sands (52J).

Clitocybe infundibuliformis (Schaeff. ex Weinm.) Quel.
Saltburn Gill (61U) (AWL).

Clitocybe nebularis (Batsch) Kummer
Common and widespread, especially late in the year.

Clitocybe odora (Bull. ex Fr.) Kummer
Thorpe Wood LNR (42C), Eston Moor Woods (51T) and under beech (*Fagus*)
hedge, Loftus Warren (AWL).

Clitocybe phyllophila (Fr.) Kummer
Coatham Dunes (AWL @ Kew).

Clitocybe rivulosa (Pers. ex Fr.) Kummer
Coastal grassland. North Gare Sands (52J) and grassland, Lazenby Bank Car
Park (51U).

Clitocybe suaveolens (Schum. ex Fr.) Kummer
Grinkle Park (YNU).

CLITOPILUS (Fr.) Kummer

Clitopilus prunulus (Scot.) Kummer
Commonly found amongst grass, dunes and roadsides. Also recently found in
arable field near Battersby Junction (North Yorkshire).

COLLYBIA (Fr.) Kummer

Collybia butyracea (Bull.) Kuromer
Common and widespread in both deciduous and coniferous woodland.

Collybia butyracea f. asema Fr.
Eston Moor Woods (SIT).

Collybia confluens (Pers. ex Fr.) Kummer
Handale, Loftus (AWL) and Kilton Woods (71D).

Collybia dryophila (Bull.) Kummer
Infrequently found, usually in broadleaved woodland e.g. Thorpe Wood LNR
(42C).

Collybia fusipes (Bull. ex Fr.) Quel.
Handale, Loftus (AWL).

Collybia maculata (Alb. & Schw.) Kummer
Appears to be fairly common on acid soils, Eston Moor (51T) and Errington
Woods (62F).

Collybia peronata (Bull.) Kummer

Common in broadleaved woodland as at Saitburn Gill SSSI (62Q), Thorpe Wood LNR (42C) etc.

CONOCYBE Fayod

Conocybe appendiculata J. Lange & Kuhn.

Grinkle Park, (YNU).

Conocybe arrhenii (Fr.) K.v.Wav.

By pathsides Thorpe Wood LNR (42C) and Eston Woods (51N).

Conocybe coprophila (Kuhn.) Kuhn.

On dung, Seaton Common (52J)

Conocybe dunensis Wallace

A single record from North Gare Sands (52J).

Conocybe macrocephala (Kuhn.) Kuhn. & Romagn.

A single record from pathside, Kilton Woods (71D).

Conocybe rickenii (J. Schaeff.) Kuhn.

Rough pasture, Guisborough Moor (AWL).

COPRINUS Pers.

Coprinus acuminatus (Romagn.) P.D. Orton

In grass near Normanby Brickworks (51N).

Coprinus atramentarius (Bull.) Fr.

Widespread and usually found on or near rotting stumps.

Coprinus comatus (Mull.) Pers.

Very common in grasslands, woodland edge, road verges and disturbed ground.

Coprinus hemerobius Fr.

Grinkle Park, (YNU).

Coprinus hiascens (Fr.) Quel.

Grinkle Park, (YNU)

Coprinus lagopides Karst.

One record from burnt ground, Ormesby Wood (51I).

Coprinus micaceus (Bull.) Fr.

Very common on and around stumps, especially in woodland.e.g. Newton Wood (51R), Thorpe Wood LNR (42C), Ropner Park (41J).

Coprinus niveus (Pers.) Fr.

On horse dung, Coatham Marsh Nature Reserve (52X) and cow dung, Cowpen Marsh SSSI (52C) also Seaton Common (52J) and Billingham Sewage Works(42S).

Coprinus macrocephalus (Berk.) Berk.

Sawdust and fire sites. Burn Wood, Longnewton (31X).

Coprinus plicatilis (Curt.) Fr.

Common throughout in grasslands and woodlands.

Coprinus radians (Desm.) Fr.

On sawdust and fire sites, Burn Wood, Longnewton (31X).

Coprinus radiatus (Bolt.) Pers

One record from old straw heap near Elwick, Hartlepool (43L).

Coprinus silvaticus Peck.

One record from wych elm (*Ulmus glabra*) stump, Thorpe Wood LNR (42C).

CORTINARIUS Fr.

Cortinarius (Telamonia) armillatus (Fr.) Fr.

A single specimen under oak (*Quercus*) woodland, Lazenby Bank, Kilton Woods (AWL).

Cortinarius (Myxaciium) delibutus Fr.

Kilton Woods (AWL).

Cortinarius (Telamonia) paleaceus ? Fr.

A specimen agreeing closely to this taxa is recorded from Eston Moor Woods (51T).

CRATERELLUS Pers.

Craterellus cornucopioides (L. ex Fr.) Pers.

In grass by pathside, Kilton Woods (AWL).

CREPIDOTUS (Fr.) Kummer

Crepidotus mollis (Schaeff.) Kummer

On fallen deciduous branches, Lazenby Bank (512), Kilton Woods (71D) etc.

Crepidotus variabilis (Pers. ex Fr.) Kummer

On living stems of gorze (*Ulex europaea*). Park Wood (51Y).

CRINIPPELLIS Pat.

Crinipellis stipitarius (Fr.) Pat.

Very common at North Gare Sands (52J) on marram grass (*Ammophila arenaria*) debris, also under hedgerow nr. Park Wood (51Y).

CYSTODERMA Fayod

Cystoderma amianthinum (Scop.) Fayod

Frequent on open moors and woodland including Eston Moor (51T), Guisborough Moor etc.

ENTOLOMA (Fr.) Kummer

Entoloma porphyrophaeum (Fr.) Karst.

Grinkle Park (AWL), and pasture nr. Handale (AWL).

FLAMMULINA Karst.

Flammulina velutipes (Curt.) Karst.

Very common on broadleaved trees and shrubs, especially in the winter.

GALERINA Earle

Galerina mycenoides (Fr) Kuhn.

Grinkle Park, (YNU).

GYMNOPIIUS Karst.

Gymnopilus penetrans (Fr.) Murr.
On and under *Picea* and *Pinus*, Guisborough Woods (61B).

HEBELOMA (Fr.) Kummer
Hebeloma crustuliniforme (Bull. ex St Amans) Quel.
Thorpe Wood LNR (42C), and Handale, Loftus (AWL).
Hebeloma sacchariolens Quel.
Eston Moor Woods (51N).

HOHENBUEHELIA Schuiz.
Hohenbuehelia culmicola Bon
On bases of dead couch grass (*Elymus* sp.), Coatham Dunes (AWL).

HYGROPHOROPSIS (Schroeter) Maire
Hygrophoropsis aurantiaca (Wulf.) Maire
Common with conifers and broadleaved trees at Errington Woods (62F) and on sawdust. Burn Wood, Longnewton (31X).

HYGROPHORUS Fr.
Hygrophorus (Hygrophorus) conicoides P.D. Orton
Coastal grassland by Dorman's Pool (52B).
Hygrophorus (Hygrocybe) conicus (Scop. ex Fr.) Fr.
Amongst sand dunes. North Gare Sands (52J) and by roadside, Seaton Common (52J).
Hygrophorus (Hygrophorus) hypothejus (Fr. ex Fr.) Fr.
Loftus Warren (AWL), Grinkle Park, (YNU).
Hygrophorus (Hygrocybe) insipidus (J. Lange) Lundell
Grinkle Park, (YNU).
Hygrophorus (Camarophyllus) niveus (Scop.) Fr.
Wet pasture near Elwick, Hartlepool (43G) and Aislaby Banks, Yarm (41B).
Hygrophorus (Hygrocybe) psittacinus (Schaeff.) Fr.
A single record from Lazenby Bank.
Hygrophorus (Hygrocybe) puniceus (Fr.) Fr.
Grinkle Park, Loftus (AWL).
Hygrophorus (Hygrocybe) quietus Kuhn.
In grass by pathside, Kilton Woods (AWL).
Hygrophorus (Camarophyllus) russocoriacius Berk. & Miller
One record amongst bog mosses (*Sphagnum* spp.), Scaling Dam (71K).
Hygrophorus (Hygrocybe) strangulatus P.D. Orton
In heathy pasture near Moordale Beck (51Y).

HYPHOLOMA (Fr.) Kummer
Hypholoma elongatum (Pers. ex Pers.) Ricken
Eston Moor Basin Mire (51T).
Hypholoma fasciculare (Huds.) Kummer
Common and widespread on stumps and fallen logs.

Hypholoma laeticolor (F. H. Moller) P.D. Orton
Coatham Dunes (AWL)

Hypholoma sublateritium (Fr.) Quel.
Occasional records from East Cleveland on oak (*Quercus*) stumps, also from
Eston Moor (51T).

Hypholoma udum (Pers. ex Fr.) Kuhn.
Amongst bog mosses (*Sphagnum* spp.), Eston Moor Basin Mire (51T).

INOCYBE (Fr.) Fr.

Inocybe asterospora Quel.

Kilton Woods (AWL).

Inocybe cincinnata (Fr.) Quel.

Bare soil with mixed trees, Kilton Woods (AWL).

Inocybe dulcamara (Alb. & Schw.) Kummer

A single record from streamside under alder (*Alnus glutinosa*), Kilton Woods
(71D).

Inocybe geophylla (Sow.) Kummer

Bassleton Woods, Thornaby (41M), Handale (AWL).

Inocybe geophylla var *lilacina* Gillet

One record from streamside, Kilton Woods (71D).

Inocybe griseolilacina J. Lange

Wilton Woods (AWL).

Inocybe hirtella Bros.

Under hazel (*Corylus*), Kilton Woods (AWL)

Inocybe mixtilis (Britz.) Sacc.

Kilton Woods (AWL).

Inocybe petiginosa (Fr. ex Fr.) Gill.

Grinkle Park, (YNU).

KROMBHOLZIELLA Maire

Krombholtziella roseofracta (Watl.) Bon

With birch (*Betula*) on Eston Moor (51T).

Krombholtziella scabra (Bull.) Maire

Under birch (*Betula*) on Eston Moor (51T).

Krombholtziella variicolor (Wati.) Sutara

With birch (*Betula*) on Eston Moor (SIT)

Krombolziella versipellis (Fr.) Bon

Frequent on Eston Moor (51T) with birch (*Betula*).

KUEHNEROMYCES Singer and Smith

Kuehneromyces mutabilis (Schaeff.) Singer & Smith

One record on rotten stump, Marton West Beck.

LACCARIA Berk. & Br.

Laccaria amethystea (Bull.) Orton

Mixed woodland at Lazenby Bank and Kilton Woods (AWL).
Laccaria laccata (Scop.) Cooke
Very common and widespread throughout the County.

LACRYMARIA Pat.

Lacrymaria velutina (Pers.) Konr. & Maubl.
Common saprophyte in woodland and grassland situations.

LACTARIUS DC.

Lactarius blennius (Fr.) Fr
Frequent in broadleaved woodland and in East Cleveland gills.

Lactarius chrysorreus Fr.
One specimen lacking data.

Lactarius cyathula (Fr.) Fr.
A single record with alder (*Ainus glutinosa*), Kilton Woods (71D).

Lactarius ? deterrimus Groger
Loftus Cemetery (AWL),
Lactarius pallidus (Pers. ex Fr.) Fr.
Kilton Woods (AWL)

Lactarius pterosporus Romagn.
Grinkle Park, (YNU).

Lactarius pyrogalus (Bull.) Fr.
Occasional in broadleaved woodlands e.g. Kilton Woods (71D) especially with
hazel (*Corylus avellana*).

Lactarius quietus (Fr.) Fr.
Very common in broadleaved woodland with oak (*Quercus*).

Lactarius rufus (Scop.) Fr.
Common in coniferous woodland e.g. Guisborough Woods (61B), Lazenby Bank
(51Z), Wynyard Estate.

Lactarius subdulcis (Pers. ex Fr.) Gray
Station Wood, Loftus (AWL) and Kilton Woods (71D).

Lactarius tabidus Fr.
Common on acid soils, usually with birch (*Betula*) as on Eston Moor (51T).

Lactarius torninosus (Schaeff. ex Fr.) Gray
Handale, Loftus (AWL).

Lactarius turpis (Weinn.) Fr.
Common under broadleaved woodland, especially with birch (*Betula*) as on Eston
Moor (51T).

LENTINELLUS Karst.

Lentinellus cochleatus (Pers ex Fr.) Karst.
Loftus Warren (AWL).

LEPIOTA (Pers.) S.F. Gray

Lepiota alba (Bros.) Sacc.

Common on coastal dunes and grassland. North Gare Sands (52J).

Lepiota cristata (Fr.) Kumaer

Bowesfield Pond, Stockton (411), Thorpe Wood LNR (42C) etc.

Lepiota (Macrolepiota) procera (Scop.) S.F. Gray

Frequent in grasslands throughout the County and in dune grassland. North Gare Sands (52J).

Lepiota (Macrolepiota) rhacodes (Vitt.) Quel.

Occasional in woodlands and hedgerows throughout as at Lazenby Bank Car Park (51U).

LEPISTA (Fr.) W.G. Snith

Lepista nuda (Bull.) Cooke

Common in woodlands, hedgerows and roadside verges. Also on wasteground near Bowesfield Pond, Stockton (411) and dune grassland. North Gare Sands (52J).

Lepista saeva (Fr.) Orton

Recorded from dune grassland, North Gare Sands (52J) and pasture nr. Moordale Beck (51Y).

LEPTONIA (Fr.) Kummer

Leptonia serrulata (Pers. ex Fr.) Kummer

Amongst grass and moss, Dorman's Pool (52B).

LEUCOPAXILLUS Boursier

Leucopaxillus giganteus (Sow. ex Fr.) Sing.

By gate. Grinkle Lane, Loftus Warren (AWL).

LYOPHYLLUM Karst.

Lyophyllum connatum (Schum. ex Fr.) Sing.

Wilton Woods (AWL).

Lyophyllum decastes (Fr.) Sing.

in tufts on cut stump, Norton High St., Stockton (41K).

MACROCYSTIDIA Heim

Macrocyctidia cucumis (Pers. ex Fr.) Heim

in gravelly clearing, Thorpe Wood LNR (42C).

MARASMIUS Fr.

Marasmius androsaceus (L) Fr.

On pine (*Pinus*) debris, Guisborough Woods (61B), Lazenby Bank (51Z) etc.

Marasmius oreades (Bolt.) Fr.

Frequent in grassland, often in "fairy rings"* as at Normanby Brickworks (SIN), North Gare Sands (52J).

Marasmius recubans Quel.

On nerve of Beech (*Fagus*) leaf. Grinkle Park (YNU).

Marasmius rotula (Scop.) Fr.

Common on twigs in broadleaved and coniferous woodland.

MELANOLEUCA Pat.

Melanoleuca melaleuca (Pers.) Murr.

On sawdust, Errington Woods (62F), Burn Wood, Longnewton (31X).

MELANOPHYLLUM Velen.

Melanophyllum echinatum (Roth. ex Fr.) Sing.

Gravelly clearing, Thorpe Wood LNR (42C).

MYCENA (Pers.) S.F. Gray

Mycena acicula (Schaeff. ex Fr.) Kummer
Handale, Loftus (AWL).

Mycena epipterygia (Scop. ex Fr.) Gray
Common on heaths as at Eston Moor (51T).

Mycena fibula (Bull.) Kuhner
In short grass amongst moss, Roseberry Common SSSI.

Mycena flavo-alba (Fr.) Quel.
Common in lawns and short grasslands, Aislaby Bank, Yarm (41B).

Mycena galericulata (Scop.) S.r. Gray
and widespread in broadleaved woodlands

Mycena galopus (Pers. ex Fr.) Kummer
Common on twigs and leaf-litter throughout.

Mycena haematopus (Pers. ex Fr.) Kummer
Kilton Woods (71D).

Mycena inclinata (Fr.) Quel.
Loftus Woods (AWL).

Mycena leptcephala (Pers. ex Fr.) Gill.
In grass and amongst herbaceous litter on roadside nr. Park Wood (51Y).

Mycena pudica Hora
Kilton Woods (AWL).

Mycena pura (Pers. ex Fr.) Kummer
In mixed woodland as at Thorpe Wood LNR (42C).

Mycena sanguinolenta (Alb. & Schw.) Kummer
Common in mixed and coniferous woodland, Guisborough Woods (61B),
Lazenby Bank (512) etc.

Mycena speirea (Fr. ex Fr.) Gill.
On woody debris, Kilton Woods (71D), Eston Woods (SIN) and Park Wood (51Y)
etc.

Mycena uracea Pearson
On fire site, Eston Moor Woods (SIT).

Mycena vitilis (Fr.) Quel.
Kilton Woods (AWL).

NOLANEA (Fr.) Kummer

Nolanea hebes (Romagn.) Orton

Mixed woodland, Kilton Woods (71D).
Nolanea sericea (Bull. ex Merat) P.D. Orton
Coastal grassland. North Gare Sands (52J).

OMPHALINA Quel.
Omphalina pyxidata (Bull. ex Fr.) Quel.
On thin soil over concrete on waste ground, Coatham (AWL).

OUDEMANSIELLA Speg.
Oudemansiella mucida (Schrad. ex Fr.) Hohn.
In tiers on a young dead beech (*Fagus*), Handale, Loftus (AWL).
Oudemansiella radicata (Rehian ex Fr.) Sing.
Mixed broadleaved copse, Lazenby Bank Car Park (51U).

PANAEOLINA Maire
Panaeolina foeniseii (Pers.) Maire
Common and widespread in grasslands and dunes.

PANAEOLUS (Fr.) Quel
Panaeolus semiovatus (Sow.) Lundell
Very common in grazed grasslands as at Coatham Marsh Nature Reserve (52X).
Panaeolus sphinctrinus (Fr.) Quel.
On cow dung, Seaton Common (52J), pasture nr. Moordale Beck (51Y).
Panaeolus subalteatus (Berk. f. Br.) Sacc.
Dunes at South Gare (AWL)

PANELLUS Karst.
Panellus serotinus (Schrad.) Kuhner
One record from Kilton Woods (71D).
Panellus stipticus (Bull.) Karst.
A single record from Burn Wood, Longnewton (31X)

PAXILLUS Fr.
Paxillus involutus (Batsch) Fr.
Very common in woodland/moorland as at Eston Moor Woods (51T).

PHOLIOTA (Fr.) Kummer
Pholiota filia (Fr.) P.D. Orton
Grinkle Park, (YNU).
Pholiota highlandensis (Peck) Smith
Known from bonfire site Burn Wood, Longnewton (31X) and from burnt ground,
Guisborough Moor (51M).

PLEUROTUS (Fr.) Kummer
Pleurotus cornucopiae (Paulet) Roll.
Fairly common on dead elm (*Ulmus*) as at Saltburn Gill SSSI (61Q).

Pleurotus ostreatus (Jacq.) Kummer
Common on a variety of broadleaved trees, Newton Wood (5IR) Lazenby Bank (51Z) etc.

PLUTEOLUS (Fr.) Gill.

Pluteolus aleuriatus (Fr.) Karst

A single record from sawdust heaps, Errington Woods (62F).

PLUTEUS Fr.

Pluteus atromarginatus (Konrad) Kuhn.

Grinkle Park, (YNU).

Pluteus boudieri Orton

A single record from sawdust. Burn Wood, Longnewton (31X).

Pluteus cervinus (Schaeff.) Kummer

On dead wood, Kilton Woods (71D) and sawdust. Burn Wood, Longnewton (31X).

Pluteus griseopus Orton

On buried woody fragments, Kilton Woods (71D)

Pluteus romellii (Britz.) Sacc.

On fallen elm (*Ulmus*), Kilton Woods (71D), on sawdust, Burn Wood, Longnewton (31X) and Loftus Warren (AWL).

PSATHYRELLA (Fr.) Quel.

Psathyrella albidula (Romagn.) Moser

Thorpe Wood LNR (42C).

Psathyrella ammophila (Dur. & Lev.) P.D. Orton

At base of marram grass (*Ammophila arenaria*). North Gare Sands (52J), Coatham Dunes (AWL).

Psathyrella candolleana (Fr.) Maire

Common in woods and grasslands throughout the county.

Psathyrella gracilis (Fr.) Quel.

Burn Wood, Longnewton (31X).

Psathyrella hydrophila (Bull. ex Merat) Maire

Loftus Warren (AWL).

Psathyrella pennata (Fr.) Pearson & Dennis

On fire site, Handale Woods (AWL).

PSILOCYBE (Fr.) Kuauner

Psilocybe semilanceata (Fr.) Kummer

Very common in grasslands, especially in East Cleveland,

RUSSULA Pers.

Russula aquosa Leclair

Grinkle Park, (YNU).

Russula atropurpurea (Krombh.) Britzelm.

Found occasionally in broadleaved woods, Thorpe Wood LNR (42C), Saltergill Woods (41A).

Russula betularum Hora
 Under birch (*Betula*), Eston Moor Woods (51T).
Russula caerulea Pers. ex Fr.
 Grinkle Park, (YWU).
Russula cyanoxantha (Schaeff.) Fr.
 Common throughout in broadleaved woodland e.g. Thorpe Wood LNR (42C),
 Kilton Woods (71D) etc.
Russula delica Fr.
 On pathside, Kilton Woods (71D).
Russula densifolia (Secr.) Gill.
 Grinkle Park, (YNU).
Russula fellea (Fr.) Fr.
 Handale, Lottus (AWL).
Russula foetens (Pers. ex Fr.) Fr.
 Handale, Loftus (AWL)*
Russula fragilis (Pers. ex Fr.) Fr.
 Thorpe Wood LNR (42C).
Russula nigricans (Bull. ex Herat) Fr.
 Thorpe Wood LNR (42C).
Russula nitida (Pers. ex Fr.) Fr.
 Under birch (*Betula*), Eston Moor Woods (51T).
Russula ochroleuca (Pers.) Fr.
 Very common under broadleaved and coniferous trees.
Russula sanguinea (Bull.) Fr.
 Known from pine woods (*Pinus*), Errington Woods (62F).
Russula sardonica Fr.
 Grinkle Park, (YNU).
Russula sutofoetens Smith
 Grinkle Park, (YNU).
Russula velenovski Meltzer & Zvara
 Grinkle Park, (YNU).
Russula vesca Fr.
 Handale, Loftus (AWL).

STROPHARIA (Fr.) Quel.
Stropharia aeruginosa (Curt. ex Fr.) Quel.
 By pathside. Burn Wood, Longnewton (31X).
Stropharia albocyanea (Desm.) Quel.
 Found infrequently in coastal sand dunes, North Gare Sands (52J).
Stropharia coronilla (Bull. ex Fr.) Quel.
 Dune slacks. North Gare Sands (52J), Coatham Dunes (AWL).
Stropharia inuncta (Fr.) Quel.
 In mossy grassland, Aislaby Banks, Yarm (41B), ICI Wilton (52V).
Stropharia semiglobata (Batsch) Quel.
 Very common in grazed pastures throughout the county.

SUILLUS Gray

Suillus grevillei (Klot.) Sing.

Common under larch (*Larix*) as at Lockwood Beck (61R) and Gunnersvale Farm, Hartlepool (42P).

TEPHROCYBE Donk

Tephroclybe anthracophila (Lasch) Orton

A single record from old fire site, Burn Wood, Longnewton (31X).

Tephroclybe atrata (Fr.) Donk

On fire site, Burn Wood, Longnewton (31X), Grinkle Park (YNU).

Tephroclybe impexa (Karst) Mos.

On burnt ground, Burn Wood, Longnewton (31X).

Tephroclybe rancida (Fr.) Donk

Liverton NZ 7114 (AWL).

Tephroclybe tesquorum (Fr.) Moser apud Gams

Grinkle Park (YNU).

TRICHOLOMA (Fr.) Kummer

Tricholoma gambosum (Fr.) Kummer

Common in grassland as at Newsham Village (31V).

Tricholoma saponaceum (Fr.) Kummer

Riftswood, Saitburn (AWL).

Tricholoma terreum (Schaeff. ex Fr.) Kummer

Common under pine (*Pinus*), Lazenby Bank (512).

TRICHOLOMOPSIS Sing.

Tricholomopsis platyphylla (Pers. ex Fr.) Sing.

Handale, Loftus (AWL).

Tricholomopsis rutilans (Schaeff.) Sing.

Common on or around conifers, Guisborough Woods (61B).

TUBARIA (W.G. Smith) Gill.

Tubaria furfuracea (Pers.) Gill.

Common in woods and grasslands, usually by pathsides and especially in winter.

(2) Aphyllophorales

ATHELIA Pers. em Donk

Athelia epiphylla Pers.

Grinkle Park, (YNU).

AURISCALPIUM Gray

Auriscalpium vulgare (Fr.) Karst.

Growing from old pine (*Pinus*) cones. Grinkle Park, (YNU).

BJERKANDERA Karst

Bjerkandera adusta (Willd) Karst

Common on dead trunks of broadleaved trees as at Lazenby Bank (51Z).

BOTRYOBASIDIUM Donk

Botryobasidium subcoronatum (v. Hohn & Litsch.) Donk

Grinkle Park, (YNU).

CHONDROSTEREUM Pouzar

Chondrostereum purpureum (Pers) Pouzar

Fairly common on deciduous stumps and logs as at Saltburn Gill SSSI (61Q).

CLAVULINA Schroet.

Clavulina cristata (Fr.) Schroet.

Lottus Warren (AWL).

CORIOLUS Quel.

Coriolus versicolor (L.) Quel.

Very common on woody plants throughout the county.

CYLINDROBASIDIUM Julich

Cylindrobasidium evolvens (Fr. ex Fr.) Julich

Common on dead wood, Wilton Woods (51Z).

DATRONIA Donk

Datronia mollis (Sommerf.) Donk

A single record on fallen wood, Yearby Woods (51Z).

FISTULINA (Bull.) Fr.

Fistulina hepatica (Schaeff.) Fr.

Surprisingly only a single record from sycamore (*Acer*) near to Normanby Brickworks (51N).

GANODERMA Karst.

Ganoderma adspersum (Schuiz.) Donk

Grinkle Park, (YNU).

HETEROBASIDION Brefield

Heterobasidion annosum (Fr.) Brefield

A common parasite on conifer stumps, Park Wood (51Y) and Loftus Warren (AWL).

HYDNUM L. ex Fr.

Hydnum repandum L. ex Fr,

Handale, Loftus (AWL).

LAETIPORUS Murrill

Laetiporus sulphurous (Bull. ex Fr«) Murrill
On living elm (*Ulmus*), Pigeon Wood, Cowpen Bewley (42X).

MERIPILUS Karst

Meripilus giganteus (Pers.) Karst
A single record on old beech (*Fagus*) stump, Norton Green (42L).

PENIOPHORA Cooke

Peniophora lycil (Pers.) v. Hohn & Litsch.
A single record from Yearby Woods(51Z).

PHELLINUS Quel.

Phellinus igniarius (L.) Quel.
On willow (*Salix*), Call Hill (31X), Billingham Bottoms (42L) etc.

PIPTOPORUS Karst

Piptoporus betulinus (Bull.) Karst
Very common and widespread on dead birch (*Betula*).

RAMARIA (Fr) Bonord.

Ramaria ochraceovirens (Jungh.) Donk
Under spruce (*Picea*), Thorpe Wood LNR (42C).
Ramaria stricta (Pers. ex Fr.) Quel.
On fallen birch (*Betula*) by roadside, Flatts Lane (51N).

STEREUM Pers.

Stereum hirsutum (Willd.) Fr.
Common on dead trees and shrubs throughout the county.
Stereum rugosum (Pers.) Fr.
Not quite as common as *S. hirsutum* and usually found on hazel (*Corylus*).

THELEPHORA Fr.

Thelephora spiculosa (Fr.) Burt.
Kilton Woods (AWL)
Thelephora terrestris Ehrh. ex Fr.
Loftus Warren (AWL).

TYPHULA Fr.

Typhula erythropus (Bolt.) Fr.
A single record from dead twigs, Burn Wood, Longnewton (31X).

TYROMYCES Karst.

Tyromyces stipticus (Pers. ex Fr.) Kotlaba & Pouzar
Loftus Woods (AWL).

(3) Tremellales and Other Orders

AURICULARIA Bull.

Auricularia auricula judae (Bull.) Berk.

Very common, especially on elder (*Sambucus*) but also found on sycamore (*Acer*) at Yearby Woods (51Z).

CALOCERA (Fr.) Fr.

Calocera cornea (Batsch) Fr.

On broadleaved trees, Kilton Woods (71D).

Calocera glossoides (Pers. ex Fr.) Fr.

Grinkle Park, (YNU).

Calocera pallidospathulata Reid

On dead wood, Kilton Woods (71D), Cowley Moor Plantation (41D).

Calocera viscosa (Pers.) Fr.

Common on conifer wood, Guisborough Woods (61B), Busky Dale, Margrove Park (61M), Loftus Warren (AWL).

DACRYMYCES Nees

Dacrymyces capitatus Schw.

Grinkle Park, (YNU).

Dacrymyces stillatus Nees

Very common and widespread on damp, dead wood.

EXIDIA Fr.

Exidia glandulosa (Bull.) Fr.

A single record from Thorpe Wood LNR (42C).

TREMELLA Dill. ex Fr.

Tremella mesenterica Retz. ex Hook,

On rotten wood, Eston Moor Woods (51T).

(4) Gasteromycetes

BOVISTA Pers.

Bovista nigrescens Pers.

One record on Roseberry Common (51R)

CALVATIA Fr. em Morg.

Calvatia excipuliformis (Schaeff. ex Pers.) Perdeck

Coastal grassland, North Gare Sands (52J).

Calvatia utriformis (Bull. ex Pers.) Jaap

By pathside, Guisborough Branch Railway.

CRUCIBULUM Tul.

Crucibulum laeve (Huds.)

On dead herbaceous stems and damp rotten wood, Coatham Marsh Nature Reserve (52X), on pine (*Pinus*) cone, Park Wood (51Y).

CYATHUS Haller

Cyathus olla (Batsch) Pers.

Common on partially buried wood, North Gare Sands (52J) and at base of couch grass (*Elymus* sp.), Coatham Dunes (AWL).

LANGERMANNIA Rostk.

Langermannia gigantea (Batsch) Rostk

In grassland near Milton (51U) and Elwick

LYCOPERDON Tournef.

Lycoperdon foetidum Bonord.

In mixed woodland, Eston Moor Woods (51T).

Lycoperdon perlatum Pers.

Our commonest puffball found throughout the county in a variety of habitats.

Lycoperdon pyriforme Pers.

On dead stump Kilton Woods (71D), Thorpe Wood LNR (42C).

MUTINUS Fr.

Mutinus caninus (Huds.) Fr.

Lazenby Bank and Loftus Warren (AWL).

PHALLUS L.

Phallus impudicus L.

Fairly common, especially in woodlands as at Burn Wood, Longnewton (31X).

SCLERODERMA Pers.

Scleroderma verrucosum Pers.

One record from pathside, Newton Wood (51R). This may well belong to *S. bovista* Fr. although no specimen now remains to authenticate this.

(5) Teliomycetes

(1) Uredinales

COLEOSPORIUM Lev.

Coleosporium tussilaginis (Pers.) Lev,

Commonly found on coltsfoot (*Tussilago farfara*).

KUEHNEOLA Magn

Kuehneola uredinis (Link) Arth

Stages II and III on old bramble (*Rubus fruticosus* agg), Preston Park (41H) (AWL)

PHRAGMIDIUM Link

Phragmidium violaceum (Schultz) Wint.

On leaves of bramble (*Rubus fruticosus* agg.), Burn Wood, Longnewton (31X), Park Wood (51Y).

PUCCINIA Pers.

Puccinia arenariae (Schun) Wint.

On leaves of red campion (*Silene dioica*), Kilton Woods (71D), Lazenby Bank (51Z).

Puccinia caricina DC. (*var ribesil-pendulae*) (Hasler) Henderson)

On leaves of pendulous sedge (*Carex pendula*), Kilton Woods (71D), Yearby Woods (51Z).

Puccinia glechomatidis DC

On ground ivy (*Glechoma hederacea*). Grinkle Park, (YNU).

Puccinia obscura Schrot.

On leaves of woodrush, Kilton Woods (71D).

Puccinia recondita Rob. & Desn.

On leaves of *Holcus*, Kilton Woods (71D).

XENODOCHUS Schlecht.

Xenodochus carbonarius Schlecht.

Occasional on great burnet (*Sanguisorba officinalis*), Billingham Bottoms (42L)

(2) Ustilaginales

USTILAGO (Pers.) Roussel

Ustilago violacea (Pers.) Roussel

Fairly frequent on red campion (*Silene dioica*), Saltburn Gill SSSI (61Q), Billingham Bottoms (42L), Thorpe Wood LNR (42C) etc.

DEUTEROMYCOTINA (Fungi Imperfecti)

Hyphomycetes

DORATOMYCES Corda

Doratomyces microsporus (Sacc.) Morton & Smith

Cultivated on hare dung, Coatham Dunes (AWL).

PYCNOSTYSANUS Lindau

Pycnostysanus azaleae (Peck) Mason

On Rhododendron, Grinkle Park, (YNU).

Coelomycetes

PHOMA Sacc.

Phoma rhodoraе Cooke

On Rhododendron, Grinkle Park, (YNU).

REFERENCES

- Bramley, W.G. (1973) Mycological Section Excursions In 1972
Naturalist No.926 p.109-110.
- Clark, M.C. (ed.) (1980) A Fungus Flora of Warwickshire
- Dennis, R.W.G. (1986) Fungi of the Hebrides
- Graham, G. G. (1988) The Flora and Vegetation Of County Durham.
- Hering, T.F. (1977) Autumn Fungus Foray, Whitby, 9th to 13th
Sept. 1976 Naturalist No. 943 p.146.
- Hering, T.F. (1984) Fungus Forays In 1981 Naturalist No. 968
p.37-40.
- Lawrence, I. C. (In press) A Flora of Cleveland.
- Weir, A. & Allinson, N. (1988) Wildlife Habitats In Cleveland

RECENT RECORDS OF INSECTS FROM GREENABELLA MARSH

by Alex Weir BSc (Hons).

Whilst much is known about the birds and flowers of Greenabella Marsh, other groups such as insects remain fairly neglected. This statement holds true for many other sites since there are few people working on insects and even these tend to specialise in particular groups since the range of species is so large.

One of the better-known groups are the moths and these were the subject of investigation at Greatham on the night of 26th July. The weather was ideal being warm, humid and fairly overcast - perfect conditions for sitting in the middle of Greenabella Marsh watching a mercury vapour lamp. The "trap" consisted of the lamp situated on top of a large, plastic, circular container into which the visiting moths were attracted. The advantages of this sort of trap are that the moths remain uninjured and can be released as soon as identification has been confirmed.

The trap ran from 9.00 p.m. until 7.00 a.m. and the total catch was 23 species. Many of these were common ones such as large yellow underwing, drinker moth and yellow tail, however there were also a number of surprises.

On closer inspection 2 species caught my eye and these were later confirmed as Dog's tooth moth and least yellow underwing.

Dog's tooth moth

At the turn of the century this was noted as a "scarce and local species" in NE England and the only record since then is of one on 1st June 1986 on Holy island, Northumberland. (Dunn, T.C. 6 Parrack, J.D. 1986).

Back in the 1890 's this species was known from Greatham Marshes and for Hartlepool sand banks (presumably at Seaton Carew) (Robson, J.E. 1899) although these have never been repeated until now.

Least Yellow Underwing

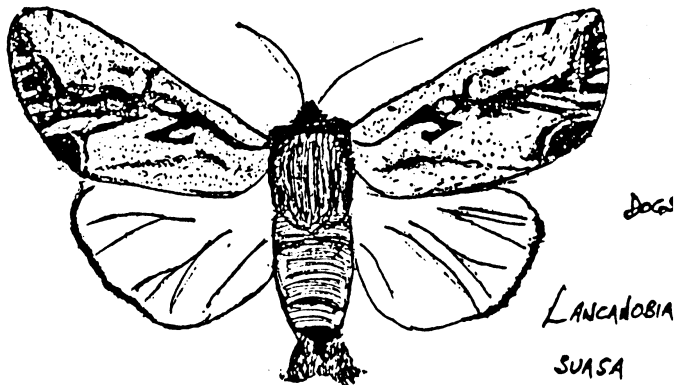
This species was said to be taken frequently "at ragwort flowers on the sandhills" at Hartlepool up to at least 1884 (Robson, J.E. 1899). Even in those days it was known not to occur further north and since then it has retreated. There are no other records north of the Tees excepting this one from Greenabella Marsh.

The presence of these regionally uncommon, coastal moths on Greenabella Marsh is particularly interesting as statements have recently been made that the great loss of habitat around the mouth of the Tees will almost certainly have resulted in the loss of species like these (Dunn, T.C. & Parrack, J.D. 1986); the fact that they are still here, albeit in small numbers, is most encouraging.

I am indebted to Tioxide UK Ltd., Greatham Works for permission to carry out survey work on Greenabella Marsh and in particular to Mr. G. L. Dixon for much help with the organisation and efficient running of the operation. In addition I would wish to thank Mr. C.J. Gardiner of the Nature Conservancy Council for loan of equipment and Mr. T. C. Dunn for confirmation of critical species.

REFERENCES

- Dunn, T.C. & Parrack J.D. (1986) The Moths and Butterflies of
Northumberland & Durham Pt. 1
- Robson, J.E. (1899) A Catalogue of the Lepidoptera of
Northumberland, Durham & Newcastle
upon Tyne. Trans. N.H.S.Northd., Durham
& Newcastle upon Tyne Vol. 12 pt.1



REPORTS ON 1990 FIELD MEETINGS

Twenty two field meetings were held during 1990 at various localities in Cleveland, North Yorkshire and Teesdale. In addition a visit was made to the Gateshead Garden Festival with members of the Hartlepool Natural History Society.

A selection of ten field reports appear here and are mainly concerned with the flowering plants encountered on outings. It is hoped that the 1991 meetings, being focussed more on scientific recording, will attract a greater range of specialists and thus more complete reports.

Thanks must be recorded here to Pat Wood for consistently acting as overall field recorder at all of these meetings.

CNFC REPORT NO.1 NEWTON WOODS, CLEVELAND

On Wednesday 25th April Maurice Ward led a party through Newton Woods on the slopes of Roseberry Topping and took a circular route via Airy Holme Farm. Newton Wood, probably one of the finest examples remaining of acidic oak woodland in Cleveland, supported lush colonies of typical woodland herbs including bluebell (*Endymion non-scriptus*), wood sorrell (*Oxalis acetosella*) and greater stitchwort (*Stellaria holostea*). In the damper areas the vegetation was characterised by opposite leaved golden saxifrage (*Chrysosplenium oppositifolium*), marsh marigold (*Caltha palustris*) and wavy bittercress (*Cardamine flexuosa*) and in the open glades grasses including tufted hair grass (*Deschampsia caespitosa*) and fine bent grass (*Agrostis capillaris*) were common. In total 110 species of flowering plant were found.

CNFC REPORT No.2 TRIPSDALE, NORTH YORKSHIRE

This outing began from the Chop Gate car park and proceeded via William Beck Farm, on the east side of Bilsdale valley, across Black Intake Moor and down into Tripsdale. The party was led by Kath Dilworth and some of the more interesting sightings included a large colony of moschatel (*Adoxa moschatellina*) in the car park entrance, ivy leaved crowfoot (*Ranunculus hederaceus*) on the muddy edges of a small pond and thyme leaved speedwell (*Veronica serpyllifolia*) on the grass verges of the track.

On the moor top cowberry (*Vaccinium vitis-idaea*) was remarkably common along with bilberry (*Vaccinium myrtillus*) and crowberry (*Empetrum nigrum*). In Tripsdale itself both silver and downy birch (*Betula pendula* and *B. pubescens*) were present and the hybrid was identified. Other plants of note included marsh violet (*Viola palustris*) and climbing corydalis (*Corydalis claviculata*)
Birds seen included green woodpecker and insects of note were green hairstreak butterfly and green tiger beetle (*Cicindela campestris*).

CNFC REPORT No.3 POOLE HOSPITAL GROUNDS, NUNTHORPE

This evening walk on 2nd May was led by Ian Lawrence in response to the uncertainty about the future of the site. The grounds, which include a small woodland, a rock garden (now overgrown and virtually inaccessible) and a lake, were laid out by the late Sir Arthur Dorman and several exotic trees and herbaceous plants were introduced at this time. The Japanese and Giant knotweeds (*Reynoutria japonica* and *R. sachalinensis*) are now well established in one corner of the lake, to the exclusion of anything else ! Purple toothwort (*Lathraea clandestina*) and Solomon's Seal (*Polygonatum multiflorum*) were still present in quantity although other plants such as snake's head fritillary (*Fritillaria meleagris*) showed signs of decline due to improper management.

CNFC REPORT No.4 GT AYTON NORTH YORKSHIRE

On Wednesday 23rd May the Field Club was taken on a circular walk by Kath Houghton in the Great Ayton area. The route followed the track from the waterfall across the fields to Little Ayton and then via Brookside Farm, Airy HoLme Lane and Rye Hill Woods to Cliff Rigg. A total of some 73 flowering plants were recorded including slender speedwell (*Veronica filiformis*), Welsh poppy (*Meconopsis cambrica*) and green alkanet (*Pentaglottis sempervirens*).

CNFC REPORT No.5 UPLEATHAM. CLEVELAND

On Wednesday 13th June members were led by Mike Yates to Upleatham Banks via Tocketts Mill Woods. A total of 156 flowering plants were recorded for the tetrad squares including annual knawel (*Scleranthus annuus*), a new County record.

CNFC REPORT No.6 STOCKDALE WOODS, HIGH LEVEN, CLEVELAND

On Wednesday 20th June John Blackburn led members via High Leven Farm into the Leven Valley and Stockdale Woods. Despite atrocious weather the party continued and recorded typical woodland species such as primrose (*Primula vulgaris*) and wild garlic (*Allium ursinum*). The grassy banks sloping down to the river supported agrimony (*Agrimonia eupatoria*) and salad burnet (*Sanguisorba officinalis*). The route then followed the Leven as far as the A19 and returned via the road to Hilton. Here spurge laurel (*Daphne laureola*) was found in the hedgerow and Russian comfrey (*Syrophytum x uplandicum*) and yellow rocket (*Barbarea vulgaris*) were present in a ditch. Fungi recorded included the jelly fungus *Dacrymyces stillatus* growing on damp wood*

CNFC REPORT No.7 BATTERSBY JUNCTION, NORTH YORKSHIRE

On Wednesday July 11th members met at Battersby Junction and investigated the waste ground around the station sidings. Of particular note was the whorled sage (*Salvia verticillata*) a local plant mainly found in Southern Britain. The trackside itself held small toadflax (*Chaenorhinum minus*), slender sandwort (*Arenaria leptoclados*), sticky groundsel (*Senecio viscosus*), spearmint (*Mentha spicata*) and three hawkweeds including *Hieracium acuminatum* - the only record for the North East region. After leaving the railway track we took the forestry path through Battersby Plantation which produced musk thistle (*Carduus nutans*) and a number of fungi including larch bolete (*Suillus grevillei*), rufous milk-cap (*Lactarius rufus*), common puff ball (*Lycoperdon perlatum*) and in an arable field the miller (*Clitopilus prunulus*).

CNFC REPORT No.8 AISLABY BANKS, YARM, CLEVELAND

On Sunday July 15th the party met at Yarm and took the riverside track passing under the railway viaduct. The weather was fine and warm - tending to be thundery. Typical riverside plants included giant hogweed (*Heracleum mantagazzianum*), butterbur (*Petasites hybridus*) and Himalayan balsam (*Impatiens glandulifera*). Other plants which appeared to be more localised included hemlock water dropwort (*Oenanthe crocata*), water figwort (*Scrophularia auriculata*) and soapwort (*Saponaria officinalis*). Insects reported included ringlet butterfly and the banded agrion damselfly (*Agrion splendens*)*

CNFC REPORT No.9 SANDSEND, NORTH YORKSHIRE

On Saturday 21st July the Field Club met at the bottom of Lythe Bank and followed the nature trail along the old coastal railway track. Typical species of coastal grassland included ladies' bedstraw (*Galium verum*) and carline thistle (*Carlina vulgaris*) and on the steep banksides narrow leaved everlasting pea (*Lathyrus sylvestris*) was found. Some of the larger quarries were investigated and members were rewarded with excellent sightings of sparrowhawks flying to and from a tree at the top of the quarry. The warm weather resulted in the sighting of a number of butterflies and moths and common lizards were also seen.

On Saturday 4th August Ian Lawrence led members along the footpath following Goulton Beck towards Potto and returned via a field path which leads towards Sexhow Park Farm. A marshy area proved very interesting with wood club rush (*Scirpus sylvatica*) being discovered. In spite of its name this very uncommon plant grows in marshy places out in the open. There is a record for it on the banks of the Leven near to Rudby church but neither the leader nor any of the other botanists present had seen it before.

Other plants of this marshy area included ragged robin (*Lychnis flos cuculi*) and yellow fleabane (*Pulicaria dysenterica*). Butterflies sighted included peacock, small copper and meadow brown.

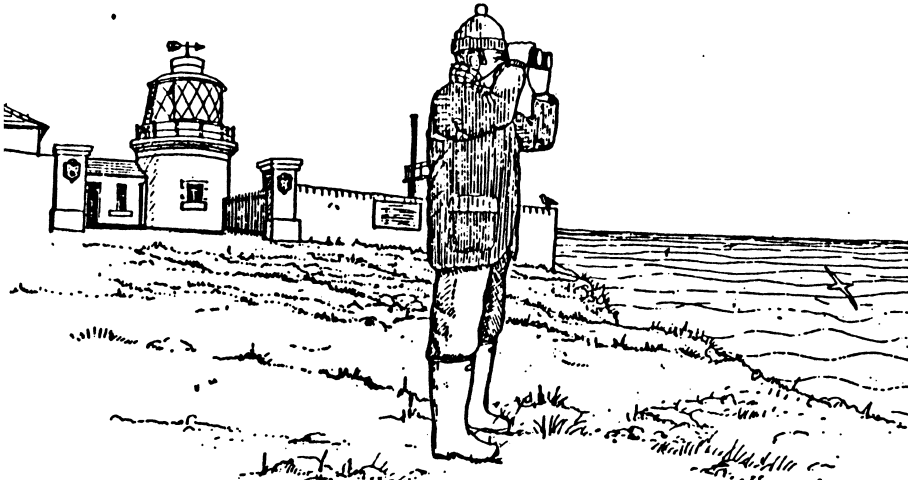
RECENT CLEVELAND NATURALISTS' FIELD CLUB PUBLICATIONS

In addition to the regular appearance of these Proceedings it is hoped that the active members within the Club will assist with the publication of occasional papers. A number of these have recently been produced and are available at a cost of 50 pence from Mr Ian Lawrence and Mr. Darroll Fryer.

1. GUISBOROUGH BRANCH WALKWAY & BRIDLEWAY • THE FLORA Compiled by Darroll Fryer, October 1990.

The above is a fairly comprehensive list of flowering plants and ferns recorded during the first 9 months of 1990. In total some 228 species are recorded and the list comprises both common and scientific names.

2. A LIST OF THE WILDFLOWERS OF CLEVELAND Compiled by Ian Lawrence, October 1990. Following on from the authors intensive survey of the wildflowers of Cleveland the above list comprises some 800+ species and is available in both scientific and common nomenclature.



RECENT SIGHTINGS AND CASUAL NOTES

The extremely hot, dry summer of 1990 produced a number of unusual records in the insect world with holly blue butterfly being recorded from Wilton Back Lane by Peter Waterton. This corresponds well with records from other parts of the region including a record from Tynemouth by H.A. Ellis (*Vasculum* Vol. 75 No 3). The most probable explanation would be that the sightings were wanderers from unusually inflated colonies in the south of England (T.C. Dunn).

Another southern visitor of particular note was the sexton beetle (*Nicrophorus interruptus*) taken at Dorman's Pool, Teesmouth in June (AW).

Other occurrences of note include the record of 370+ individuals of the common darter dragonfly (*Sympetrum striolatum*) on recently created pools at ICI Wilton (J.K. Smith pers. comm). The water levels in these pools were artificially maintained at a high level whilst many natural nearby pools had dried up completely. As far as we can ascertain this represents the greatest concentration of dragonflies seen in the County.

As these notes are written at the end of November winter bird visitors are beginning to arrive with small groups of waxwing being recorded from Guisborough and Wilton / Lazenby. Other sightings include pine crossbill at Lockwood beck reservoir, common crossbill at Lazenby Bank and goosander at Cowpen Bewley Ponds.

CLEVELAND NATURALISTS FIELD CLUB RECORDING EVENTS
AND WORKSHOP PROGRAMME 1991

- Feb. 23 Bryological Meeting, Wilton Woods - Meet at Bank Top Farm (NZ 585193). 10.00 a.m. (packed lunch)
- Apr. 7 Mycological Microscopy Workshop - Meet at Castle Eden Walkway Station House (NZ 402244) 10.00a.m. (packed lunch).
- Apr. 28 Spring Fungus Foray, Aislaby Banks, Yarm. Meet at Bluebell Pub (NZ 418133) 10.00 a.m. (packed lunch).
- May 11 Saltburn Valley Gardens, Meet at Cat Nab Car Park, Saltburn (NZ 668217). 2.00 p.m.
- May 26 Moorsholm Mill Valley - Meet near the church in Moorsholm (NZ 688145) 10.30 a.m. (packed lunch).
- Jun. 7 Moth Trapping - Meet at Billingham Beck Valley Ecology Park (NZ 453228). 9.30 p.m.
- Jun. 16 Coatham Dunes meet Majuba Road Car Park, Redcar (NZ 594253). 10.30 a.m. (packed lunch).
- Jul. 6 YNU Field Meeting - Osmotherley, Details to be announced.
- Jul. 21 Moordale Beck / Park Wood - Meet on old Guisborough Road where it crosses Sandswath Beck (NZ 594160). 10.30 a.m. (packed lunch).
- Aug. 11 Old Railway Track, Kilton Thorpe to Brotton meet Kilton Thorpe (NZ 692176) 10.30 a.m. (packed lunch).
- Aug. 25 Eston Hills, Meet Flatts Lane Car Park (NZ 543168) 10.30 a.m. (packed lunch).
- Sept .15 Ornithological Field Meeting - North Gare Sands (NZ 535282). Meet at Golf Course Car Park 10.30 a.m. (packed lunch).

THE FORMING OF A FIELD STUDY GROUP WITHIN THE CNFC

It has been felt for some time now that the role of the Field Club should be to carry out more positive recording of sites within the County and in selected sites in the adjacent parts of North Yorkshire with the aim of once again publishing scientific records on the natural history of the area.

Lack of detailed information of areas within our region has been very evident in the past year or so especially when information has been requested in connection with planning applications in sensitive sites. A recent point in case was the Saltburn Valley Gardens. No comprehensive records were available at the time when they were urgently needed.

With this in mind, about eight members of the Field Club met during early October 1990 to discuss the formation of a study group and the relaunch of these Proceedings. A mission statement was compiled and presented to the CNFC Committee by Ian Lawrence at its meeting on October 16th 1990.

The Committee gave its support but stressed that the study group would have to be self-financing in its aims to produce any publications. A nominal sum of £10 was offered to the group to help cover basic costs.

The group has met twice since then to discuss the content of these Proceedings and to prepare a programme of recording events and workshops for the 1991 season. All members are invited to take part in these special study events and to participate in submitting information for future editions of these Proceedings.

Ian Lawrence

ADDITIONS TO RECORDS OF FUNGI IN CLEVELAND

by Alex Weir BSc (Hons)

The following additions to the list appearing on pages 5-29 of this volume
Includes records made during December 1990.

BASIDIOMYCOTINA (Basidiomycetes)

(1) Hymenomycetes

Lactarius mitissimus (Fr.) Fr.

Coprinus disseminatus (Pers. ex Fr.) Gray

Mycena filopes (Bull. ex Fr.) Kummer

Pholiota gummosa (Lasch.) Sing.

(2) Aphyllophorales

Clavaria argillacea Fr.

ASCOMYCOTINA (Ascomycetes)

Pezizella alniella (Nyl.) Dennis

Sporormiella intermedia (Auersw.) Ahmed & Cain

Ascobolus immersus Pers.

Sporormiella australis (Speg.) Ahmed & Cain

Sporormiella grandispora Ahmed & Cain ex Krug

Saccobolus versicolor (Karst) Karst

Sporormiella lageniformis (Fuck.) Ahroed & Cain

Delitschia furfuracea Niessi. ex Rehm

Sporormiella minima (Auersw.) Ahmed & Cain

Podospora pleiospora (Wint.) Niessi

Melanospora brevirostris (Fuck.) Hohn.

Coniochaeta scatigena (Berk. 6 Br«) Cain

Ascobolus brassicae Crouan

DEUTEROMYCOTINA (Fungi Imperfecti)

Stilbella erythrocephala (Ditmar) Lindau

Volutella ciliata (Alb. & Schw.) Fr.

ZYGOMYCOTINA (Zygomycetes)

Pilobolus crysallinus (Wiggers) Tode

CONSULTANT MEMBERS

Members are asked to report finds or records to the following who will be pleased to help with the identification of specimens

Flowering Plants
I.C. Lawrence
11, Askern Drive
Middlesbrough

Fungi
Alex Weir
32, Hartburn Lane
Stockton on Tees

Bryophytes (Mosses & Liverworts)
J. Blackburn
6, Bylands Grove
Fairfield
Stockton on Tees

Birds
M. Hallam
16, Grosvenor Road
Blillingham
Stockton on Tees

Lepidoptera (Butterflies & Moths)
N Harwood
6, Danesfort Avenue
Guisborough

P. Waterton
Brackenhill
Belmanqate
Guisborough

M. Birtle
4, Fulmar Road
Norton
Stockton on Tees

Coleoptera (Beetles)
Alex Weir
32, Hartburn Lane

Stockton on Tees

General Entomology (insects)

N. Harwood
6, Danesfort Avenue
Guisborough

Reptiles and Amphibians

R.W. Scaife
1, Hoylake Way
Eaglescliffe
Stockton on Tees

Geology

C. Pellant
56, Hutton Lane
Guisborough

M. Birtle

4, Fulmar Road
Norton
Stockton on Tees

Heraldry & Genealogy

T.H. Brown
65, Low Lane
Brookfield
Middlesbrough