

CLEVELAND NATURALISTS'

FIELD CLUB



RECORD OF PROCEEDINGS

Volume 12 Part 4

Spring 2022

Table of Contents

President's Address	3
Acknowledgements and Note to Contributors	4
Highlights of 2021 Field Meetings	5
Gallery of Additional Images From Field Meetings 2021 <i>Mark Stokeld</i>	30
Some Invertebrates Recorded During Field Meetings 2021 <i>A A Wardhaugh</i>	36
A further look at the invertebrates of Cowpen Bewley Woodland Park 2021 <i>Daphne Aplin</i>	37
Ladybirds at Cowpen Bewley Woodland Park, Billingham: Update 2021 <i>Daphne Aplin</i>	39
Interesting invertebrate sightings on Teesside 2021 <i>Daphne Aplin</i>	41
Silver-washed Fritillaries at Mulgrave Castle <i>P W Forster</i>	42
Some observations on Barn Owls 2020 - 2021 <i>P W Forster</i>	43
Leopard Moth <i>Zeuzera pyrina</i> <i>P W Forster</i>	46
The Orange Cup, <i>Melastiza cornubienis</i> , at Lockwood Beck, Cleveland <i>P W Forster</i>	47
Moth Records 2021 <i>P W Forster</i>	49
Hyperchromic Orchids at Raisby Hill Grassland <i>Moir Wardhaugh</i>	67
Saltburn Gill: a beetle and a bug <i>A A Wardhaugh</i>	69
Field Meetings 2022	73
Newsletter March 2021	76

THE OFFICERS AND COMMITTEE 2021-2022

President	Jo Scott, Tethers End, Hartburn Village, Stockton, TS18 5DR
Vice-president	Mark Stokeld, 38 Ash Grove, Kirklevington, Yarm, TS15 9NQ
Secretary	Eric Gendle, 13 Mayfield Road, Nunthorpe, TS7 0ED
Treasurer	Hazel Stokeld, 38 Ash Grove, Kirklevington, Yarm, TS15 9NQ
Membership Secretary	Eric Gendle, 13 Mayfield Road, Nunthorpe, TS7 0ED
Programme Secretary	Neil Baker, 9 Glaisdale Court, Darlington, DL3 7AD
Immediate Past President	Malcolm Birtle, 10 Avon Grove, Billingham, TS22 5BH
Ordinary Members	Daphne Aplin, Colin Chatto.

Membership Details

The Club seeks to promote an interest in all branches of natural history and to assist members in finding out about the living things that they see in the countryside around them. The present membership includes those who have particular interests in birds, insects, slugs and snails, lichens, fungi, flowering plants, mosses and liverworts. Members with interests in other fields would be very welcome.

In spring and summer there are evening, half-day and whole-day visits to investigate the natural history of a particular area. During the winter months there is a series of meetings held in the Nunthorpe Methodist Church Hall, Connaught Road, Nunthorpe, Middlesbrough TS7 0BP. If you have any difficulty getting to this venue, please speak to any committee member and we will see if we can arrange a lift for you. A meeting usually takes the form of a talk given by a club member or visiting speaker. The annual subscription is £8.

Members are entitled to attend meetings of two affiliated organisations:

Yorkshire Naturalists' Union.

Tees Valley Wildlife Trust.

Details are available from Eric Gendle 01642 281235 and our website

<http://clevelandnats.org.uk/>

President's Address 2021 -2022

Most importantly, thank you to all the officers of the Club and members who have contributed to the activities of the Club over the past year, including articles and records for the Proceedings. It has again been a difficult year as Covid is still with us causing some anxiety over meeting together.

We were unable to hold an AGM again in March last year but made the decision that the existing Committee would stand for another year to keep the Club running. There were two resignations from the Committee: Vic Fairbrother and Paul Forster. We would like to thank them for their help and support to the Club over many years.

We did produce a full diary of outdoor meetings for the summer. Some local including South Gare, Stewart Park, Greatham Creek. Bowesfield Wetlands and Coatham Marsh and some further afield including Bishops Wood near Selby, Cropton Forest, and Boltby Reservoir. A joint walk with the North Eastern Fungus Study Group to Mulgrave Castle completed the programme. On these walks we recorded flowers, insects, butterflies, fungi, lichens and sea-shore life and many other delights of our natural world. Most of these outings are described in detail in the Club's Proceedings.

We did manage to book a much bigger room at the Methodist Church Hall in Nunthorpe, Middlebrough which gave us plenty of room to be socially distanced. This enabled us to hold monthly meetings throughout the autumn and winter. There were still uncertainties about whether we would be able to hold all the meetings so we decided to take speakers from our own membership. Starting in September with a short AGM followed by Eric Gendle who showed us the beautiful Orchids of Rhodes. Norma Pagdin and Joan Bradbury took us to Iceland in an interesting talk entitled Lupins Galore. Vic Fairbrother described the project he has been working on for a number of years in The Ring Ouzel: a View from the North Yorkshire Moors. December was our Christmas Social, handled very carefully by social distancing we enjoyed the quizzes produced by Joan and Norma and a buffet supper. I started the new year with a talk in January with a Nature Miscellany: Little and Large. Mark Stokeld followed the next month showing us his lovely photography in Paradise in Portugal and to complete the winter programme we have the AGM followed by a talk by Paul Forster entitled Natural History Highlights 2021.

The Elgie Memorial Lecture due to be hosted by the Club in December, having been postponed by the Dorman Museum the previous year due to Covid was cancelled this year because of the speakers illness.

I will be stepping down as President now and Mark Stokeld, our Vice President will take over for the next two years.

A successful year, I think, and I would like to thank the Committee for their continued support and to thank everyone who makes the club a success sharing their time and knowledge on the walks and by giving talks.

Jo Scott

Acknowledgements and Note to Contributors

The editor would like to thank all those who have contributed to the current issue of the Field Club Proceedings.

Contributions can include scientific articles, records, historical or biographical articles, poems, artwork, in fact anything which documents or celebrates natural history in Cleveland. These can be sent in at any time of year.

For the Spring issue in any year please send contributions by 1st March.

For electronic submissions please:

- use either MS Word or Pages, including for any tables (please do not submit tabulated information as a spreadsheet). Alternatively, send text in the body of an e-mail.
- avoid using any paragraph formatting and line spacing other than single.
- send any images as separate .jpg files with the caption as a separate Word or Pages file. These are always most welcome.
- when naming species provide the vernacular name, where a widely used one exists, followed by the appropriate scientific name in italics and bracketed. If no vernacular name exists please provide just the scientific name in italics.
- Send to tonyandmoirawardhaugh1@virginmedia.com

Where electronic submission is not possible:

Please post hand-written or typed articles to Dr A A Wardhaugh, 13 Captain Cook's Crescent, Marton, Middlesbrough TS7 8NN.

Highlights of 2021 Field Meetings

Sunday 30th May 10:30 am. South Gare (NZ556277).

Leader, Jo Scott.

We had a bright day for a look on the blast furnace slag behind the dunes at South Gare. All the usual flower species were found including :- Alexanders (*Smyrnium olusatrum*), Buck's-horn Plantain (*Plantago coronopus*), Bloody Cranesbill (*Geranium sanguineum*), Carline Thistle (*Carlina vulgaris*), Meadow Rue (*Thalictrum flavum*), Milk Vetch (*Astragalus danicus*), Northern Marsh Orchid (*Dactylorhiza purpurella*), Sea Milkwort (*Glaux maritima*) and Wood Sage (*Teucrium scorodonia*). We spent some time searching for the Childing Pink (*Petrorhagia nanteulii*) a rare plant, and eventually found a good number of them.



Milk Vetch

Sea Milkwort





Chiding Pink

A few insect species were spotted:- Black Marram Beetle (*Otiorhynchus atroapterus*), Hairy Shieldbug (*Dolycoris baccarum*) and a larva of the Drinker Moth (*Euthrix potatoria*).

There were few butterflies but we did find Common Blue (*Polyommatus icarus*) and Small Heath (*Coenonympha pamphilus*). A lovely walk to the tune of high flying Skylarks.



Common Blue Butterfly

After lunch a few of us stayed to look in the rock-pools where our records included: Sea Mat (*Membranipora membranacea*), Sea Mat (*Electra pilosa*), Green Sea Urchin (*Psammechinus miliaris*), Shore Crab (*Carcinus maenas*), Velvet Swimming Crab (*Necora puber*), Brittle Star (*Ophiothrix fragilis*), Dwarf Brittle Star (*Amphipholis squamata*) and Breadcrumb Sponge (*Halichondria panacea*).



Green Sea Urchin



Velvet Swimming Crab



Brittlestar

Wednesday 9th June 10:30 am. Cropton Forest (SE783894).

Leader, Neil Baker.

The Club enjoyed a visit to the Cropton Beaver Project which, for many of us but not all, was our first opportunity to see beavers in their natural environment in the United Kingdom. The visit was suggested by one of our own members, Alan Simkins, and we are very grateful to him for doing so as it made a truly memorable day. We were accompanied on our visit by Cath Bashforth, the Yorkshire Forest District Ecologist, and we are also grateful to her for sharing her expertise and knowledge of the Cropton beavers with us, as she has been involved with the project from the start.

It was a long day for us as several members also came along for both morning and afternoon sessions when we explored different parts of the local area for other aspects of local natural history of interest to us. However, the main event of the day was our evening session with the beavers.

The time of the year meant we had quite a wait for the light to start to fail and for the beavers to put in an appearance. Just walking through the fenced off and security protected site down by the water was fascinating in itself though. There was much evidence of tree felling by the beavers, with several quite big trees still only partly gnawed through as works in progress at various stages.

The highlight of the early evening was when we walked around the base of the beaver dam, below water level, to view all the hard work that had gone into its construction. Just the length of it was amazing and the natural skills employed to build it were to be envied. It was enough to put some human civil engineers to shame! There was very little water leakage and the way that all the sticks the beavers used had been carefully selected and placed to form the dam wall was incredible to see.

We then retraced our steps to find a quiet spot above the water and back from the edge to wait for the beavers to come out. They didn't disappoint, which was a good thing as you can never predict what is going to happen with wild animals. We were talking in whispers so as not to alert them to our presence and disturb them. We were also keeping as still as possible, which was not easy to do on a summer evening with a bit of damp in the air and plenty of midges giving us some wildlife encounters which we did not appreciate so much.

However, the beavers, both young and old, went about their business of swimming and feeding quite contentedly as if we were just a part of the scenery.



Tree felling by Beavers

Beaver dam



A Cropton Beaver

Earlier in the day at Yatt's Farm two individuals of the leaf beetle *Cryptocephalus aureolus* (Chrysomelidae) were seen, both feeding on Common Rock-rose flowers (*Helianthemum nummularium*), both within SE80708814. This is a nationally scarce species (category Nb i.e. thought to occur in 31 to 100 ten km squares). There are very few recent records of this attractive beetle in Yorkshire, with a small cluster in ten km square SE88 and nearby.



Cryptocephalus aureolus

**Wednesday 16th June 10:30 am. Stewart Park and Ormesby Beck (NZ517166).
Leader, David Laing.**

Wednesday 23rd June 10:30 am. Greatham Creek and North Gare ((NZ507250).

Leader Jo Scott.

It was a bright day for a walk along the side of Greatham Creek in the morning. The tide was coming in bringing the seals with it. They were very curious and lined up in the water watching us make our way along the wall. One of the first finds was a seal skeleton; Tony Wardhaugh took home the skull to clean and investigate. Among the butterflies we spotted were Grayling (*Hipparchia semele*) and Wall Brown (*Lasiommata megera*). The Graylings were incredibly well camouflaged against the colour of the stones so were difficult to find.

Plants included Common Sea Lavender (*Limonium vulgare*), Centaury (*Centaureum erythraea*), Red Valerian (*Centranthus ruber*), Yellow-wort (*Blackstonia perfoliata*) and Carlina Thistle (*Carlina vulgaris*). Lichens included the yellow *Xanthoria parietina*, *Physcia tennella* and Reindeer Moss (*Cladonia sp.*).

Meadow Pipits (*Anthus pratensis*) and Goldfinch (*Carduelis carduelis*) were flitting around in the bushes.

Several individuals of the snail *Merdigera obscura* were found beneath stones (old slag) by the north side of Bailey Bridge at NZ51685.25619. This is an unusual habitat for this snail which occurs more typically 'in all kinds of relatively undisturbed, shady places mainly on base-rich soils: deciduous woods, hedgerows, scrubland, the base of walls, among rocks' (*Atlas of the Land and Freshwater Molluscs of Britain and Ireland*, M P Kerney 1999).

A few Sea Slaters (*Ligia oceanica*) were found under stones by the creek, just east of Greatham Bridge. The jewel beetle, *Oedemera lurida* was seen by the roadside on Ox-eye Daisy (*Leucanthemum vulgare*) at NZ50872526.



Seals at Greatham Creek



**Seal Skull
Greatham Creek**



Grayling



Red Valarian



Yellow-wort



Merdigera obscura
Greatham Creek



Six-spot Burnet Moth
North Gare

In the afternoon we explored the dunes at North Gare. Melancholy Thistle (*Cirsium heterophyllum*), Northern Marsh Orchid (*Dactylorhiza purpurella*) and Common Spotted Orchid (*Dactylorhiza fuchsii*) were among the flowers seen. Six-spot Burnet Moths (*Zygaena filipendula*) were feeding on the orchids. Skylarks (*Alauda arvensis*) and a Whitethroat (*Sylvia communis*) were spotted in the shrubs.

Wednesday 30th June 10:30 am. Bowesfield Wetland Reserve (NZ444166).

Leader, Andy Astbury.

This is always a popular walk as it is right in the middle of the Club's patch and provides a leisurely, level walk to Preston Park and back along the side of the river Tees. Of particular note is the Giant Hogweed (*Heracleum mantegazzianum*) that is surviving well and may even be said to be thriving along the course of the river, despite many attempts to eradicate it altogether or at least keep it well under control.

With thanks to Daphne Aplin for supplying the following records of some of the findings on the walk.

- 2 x Ringlet *Aphantopus hyperantus*
- 2 x Blue-tailed Damselfly *Ischnura elegans*
- 6 x *Grypocoris stysi* (Miridae)
- 1 x *Psallus ambiguus* (Miridae)
- 3 x *Closterotomus norwegicus* (Miridae)
- 1 x Common Marble Moth *Celypha lacunana*
- 1 x Ten-spot Ladybird *Adalia decempunctata*
- 1 x Fourteen-spot Ladybird larva *Propylea quatuordecempunctata*
- 1 x Seven-spot Ladybird pupa *Coccinella septempunctata*
- 1 x Green Lacewing *Chrysopa* species
- 1 x Orb-weaver spider *Araniella* species, with an egg sac

One of the numerous White-lipped Snails (*Cepaea hortensis*) seen on the day was unusual in having a brown-coloured shell.



Wednesday 7th July 10:30 am. Raisby Hill Grassland (NZ325350).**Leader, Daphne Aplin.**

We were very lucky to have a spectacular day to explore this little gem. It is a Durham Wildlife Trust Nature Reserve that has limestone grassland of national significance and it certainly didn't disappoint. We spent a delightful morning in the small disused quarry admiring the flowers and butterflies. After lunch we climbed the slight incline of Raisby Hill and had good views over the surrounding countryside. On our descent to circumnavigate the site we came across a wonderful array of orchids and other flowers among the grass.

Listed below are some examples of the 50+ flowering plants (not including grasses or sedges) and invertebrates recorded. Grateful thanks extended to Ruth and Peter Waterton and Moira and Tony Wardhaugh for their expertise.

	Common Name	Scientific Name
Flowering Plants	Common Spotted Orchid	<i>Dactylorhiza fuchsii</i>
	Common Twayblade	<i>Neottia ovata</i>
	Dark-red Helleborine	<i>Epipactis atrorubens</i>
	Pyramidal Orchid	<i>Anacamptis pyramidalis</i>
	Bee Orchid	<i>Ophrys apifera</i>
	Northern Marsh Orchid	<i>Dactylorhiza purpurella</i>
	Common Rock-rose	<i>Helianthemum nummularium</i>
	Meadow Crane's-bill	<i>Geranium pratense</i>
	Yellow-wort	<i>Blackstonia perfoliata</i>
	Slender St. John's-wort	<i>Hypericum pulchrum</i>
	Yellow Rattle	<i>Rhinanthus minor</i>
	Perennial Flax	<i>Linum perenne</i>
	Greater knapweed	<i>Centaurea scabiosa</i>
	Common Milkwort	<i>Polygala vulgaris</i>
	Betony	<i>Stachys officinalis</i>
	Quaking Grass	<i>Briza media</i>
	Wild Thyme	<i>Thymus polytrichus</i>
Butterflies	Brown Argus	<i>Aricia agestis</i>
	Common Blue	<i>Polyommatus icarus</i>
	Small Tortoiseshell	<i>Aglais urticae</i>
	Dark-green Fritillary	<i>Argynnis aglaja</i>
	Meadow Brown	<i>Maniola jurtina</i>
	Ringlet	<i>Aphantopus hyperantus</i>
	Small Heath	<i>Coenonympha pamphilus</i>
	Small Skipper	<i>Thymelicus sylvestris</i>
	Large Skipper	<i>Ochlodes sylvanus</i>

Moths

Shaded Broad-bar	<i>Scotopteryx chenopodiata</i>
Silver-ground Carpet	<i>Xanthorhoe montanata</i>
Yellow Shell	<i>Camptogramma bilineata</i>
Straw Dot	<i>Rivula sericealis</i>

Mirid Bug*Calocoris roseomaculatus*

A leaf beetle, *Cryptocephalus aureolus*, was found on the reserve at NZ33349.35278 feeding on a hawkweed flower. This was a notable find, the only other county Durham (VC66) record for this species on the NBN Atlas website being for The Park at Castle Eden, dated 1833 (See the report above for the field meeting at Yatt's Farm where this beetle was also found).

Several Large Black Slugs were seen on the reserve but they were somewhat unusual in that some were typical of this species i.e. the *Arion ater* segregate whilst others appeared to be the frequently encountered hybrid Large Black x Large Red Slug *Arion ater* aggregate. It was surprising to find individuals of what appeared, externally at least, to be both forms occurring together. These slugs are known to have a very varied diet and one *A. ater* agg. was seen feeding on a dead Brown-lipped Snail *Cepaea nemoralis*.

On the way home a few of us stopped off at Wingate Quarry where there was a good showing of Marbled White Butterflies (*Melanargia galathea*).

**Raisby Hill Grassland**



**Club members at Raisby Hill
Grassland**

***Calocoris roseomaculatus*
on a Fragrant Orchid**





**Dark Green Fritillary
Raisby Hill Grassland**

Wednesday 21st July 10:30am. Bishop Wood near Selby (SE560332).

Leaders, Mark and Hazel Stokeld.

Bishop Wood belongs to the Forestry Commission and covers an area of 340.7 hectares being mixed woodland where broadleaved species are dominant.

The weather was calm, cloudy with the sun breaking through by mid-day. The main purpose of the visit was to observe the Lepidoptera and other insects of the woodland.

Flora:-

Enchanter's Nightshade
 Meadowsweet
 Creeping Thistle
 Marsh Thistle
 Common Cow-wheat
 Ribbed Melilot
 Hedge Woundwort
 Hogweed
 St. John's-wort sp.
 Common Spotted Orchid
 Broad-leaved Helleborine
 Himalayan Balsam
 Red Bartsia
 Meadow Vetchling
 Common Centaury
 Water Figwort
 Bracken
 Bramble sp.

Fox and Cubs
Sow Thistle
Common Nettle
Marsh Valerian
Tufted Vetch

This is not an exhaustive list but gives a flavour of the understory.

There were plentiful members of hoverfly species, the commonest of which was the Marmalade Hoverfly.

Butterflies:-

Ringlet
Green-veined White
Meadow Brown
Comma
Silver-washed Fritillary
White-letter Hairstreak

Dragonflies:-

Common Hawker
Brown Hawker

Beetle:

A longhorn: *Rutpella maculata*



Brimstone



Silver-washed Fritillary



White-letter Hairstreak



Grass Snake

Wednesday 28th July 10.30:am. Foxglove Covert Local Nature Reserve (SE166975).
Leader, Eric Gendle.

Wednesday 4th August 10:30 am. Coatham Marsh, Redcar (NZ580250).
Leader, Daphne Aplin.

It is always a delight to go to this reserve, managed by the Tees Valley Wildlife Trust, and we were fortunate to have a lovely day on which to make this return visit. It is noted for its reedbeds and wildflower meadows. A good start to the day was the sight of a small flock of Lapwings (*Vanellus vanellus*) in the field adjacent to the site entrance. Sadly, I have not seen many this year. During our walk we did not see much insect activity but that lack was made up for by the flowering plants. We climbed the footbridge that crosses the Middlesbrough to Saltburn railway line and stopped for lunch by the side of one of the lakes. We returned via a track over the landscaped mounds and with the elevated prospect we were able to have good views over the site and, in the distance, see the sun lighting up the spire of the stunning Grade II listed Christ Church at Coatham, which dominates Redcar's skyline. A lovely end to the day.

Taxon / Group	Common name (if any)	Scientific Name
Flowering Plants	Canadian Goldenrod	<i>Solidago canadensis</i>
	Great Willowherb	<i>Epilobium hirsutum</i>
	Everlasting Pea	<i>Lathyrus latifolius</i>
	Pineapple Weed	<i>Matricaria discoidea</i>
	Black Medick	<i>Medicago lupinula</i>
	Common Restharrow	<i>Ononis repens</i>
	Meadow Cranesbill	<i>Geranium pratense</i>
	Ragwort	<i>Jacobaea vulgaris</i>
	Common Knapweed	<i>Centaurea nigra</i>
	Broad-leaved Dock	<i>Rumex obtusifolius</i>
	Angelica	<i>Angelica archangelica</i>
	Great Reedmace	<i>Typha latifolia</i>
	Common Toadflax	<i>Linaria vulgaris</i>
	Weld	<i>Reseda luteola</i>
	Wild Mignonette	<i>Reseda lutea</i>
	Viper's Bugloss	<i>Echium vulgare</i>
	Red Valarian	<i>Centranthus ruber</i>
	Carline Thistle	<i>Carlina vulgaris</i>
	Common Stork's-bill	<i>Erodium cicutarium</i>
	Red Bartsia	<i>Odontites vernus</i>
	Yellow-wort	<i>Blackstonia perfoliata</i>

	Woody Nightshade	<i>Solanum dulcamara</i>
Odonata	Blue-tailed Damselfly	<i>Ischnura elegans</i>
	Common Darter	<i>Sympetrum striolatum</i>
Lepidoptera	Speckled Wood	<i>Pararge aegeria</i>
	Small Heath	<i>Coenonympha pamphilus</i>
	Grayling	<i>Hipparchia semele</i>
	Meadow Brown	<i>Pieris napi</i>
	Common Blue	<i>Polyommatus icarus</i>
	Wall Brown	<i>Lasiommata megera</i>
	Small Skipper	<i>Thymelicus sylvestris</i>
	Latticed Heath	<i>Chiasmia clathrata</i>
	Shaded Broad-bar	<i>Scotopteryx chenopodiata</i>
	Cinnabar (larvae)	<i>Tyria jacobaeae</i>
Trichoptera		<i>Limnephilus marmoratus</i>
Diptera		<i>Chrysotoxum bicinctum</i>
		<i>Sphaerophoria</i> sp. F.
		<i>Eriothrix rufomaculata</i>
Coleoptera		<i>Oedemera lurida</i>
Hymenoptera		<i>Tenthredo arcuata</i>
Heteroptera		<i>Heterotoma planicornis</i>
		<i>Plagiognathus arbustorum</i>
		<i>Philaneus spumarius</i>

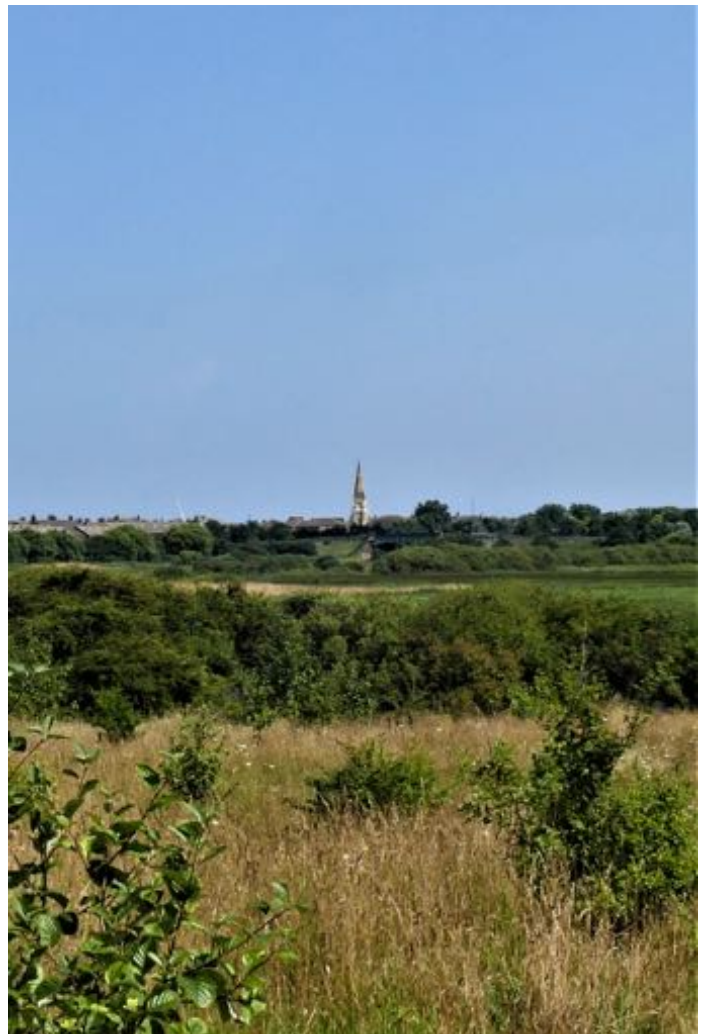


Oedemera lurida



Tenthredo arcuata

Christ Church, Coatham



**Wednesday 11th August 10:30am. Tilery Wood and Walkway (NZ404284).
Leaders, Mark and Hazel Stokeld.**

The terrain is semi-open woodland with multiple roughly surfaced paths. There are a number of small, somewhat overgrown ponds through the area. The very busy A689 runs across the short northern edge of the area and there is an extensive informal parking area at the entrance from the road.

The visit lasted approximately three hours. The weather was calm with sunny intervals and one fairly heavy shower towards the end of the visit.

Palomena prasina nymphs at different stages. (Green Shieldbugs)

Plagiognathus arbustorum. (Mirid)

Closterotomus norwegicus. (Mirid)

Lygus pratensis. (Mirid)

Rhopalus subrufus nymph. (Mirid)

Pinalitus cervinus. (Mirid)

Evacanthus interruptus. (Leafhopper)

Cicadella viridis. (Leafhopper)

Episyrphus balteatus. (Marmalade Hoverfly)

Leucozona glaucia. (Hoverfly)

Melangyna umbellatarum. (Hoverfly)

Tachina fera. (Diptera)

Leptura quadrifasciata. (Longhorn Beetle) x 2

Oedemera lurida. (Beetle)

Tenthredo species. (Beetle)

Lestes sponsa (Emerald Damselfly)

Dingy Footman Moth (*Eilema griseola*)

Broad-leaved Helleborine (*Epipactis helleborine*)

Red Bartsia (*Odontites vernus*)

Black Medic (*Medicago lupulina*)

Meadowsweet (*Filipendula ulmaria*)

Ribbed Melilot (*Melilotus officinalis*)

Agrimony (*Agrimonia eupatoria*)

White Valerian (*Valeriana officinalis*)

Wood Avens (*Geum urbanum*)

Figwort (*Scrophularia* sp)

Enchanter's Nightshade (*Circaea lutetiana*)

Hypericum

Hedge Woundwort (*Stachys sylvatica*)

Water Figwort (*Scrophularia auriculata*)

Speckled Wood (*Pararge aegeria*)

Green Veined White (*Pieris napi*)

Southern Hawker (*Aeshna cyanea*)

Common Hawker (*Aeshna juncea*)

Common Darter (*Sympetrum striolatum*)

Great Diving Beetle (*Dytiscus marginalis*)

Spangle Galls



Emerald Damselfly



Great Diving Beetle



Southern Hawker

Sunday 15th August 10:30am. Boltby Reservoir (SE502871).**Leader, Bill Hall.**

The Club enjoyed its annual joint meeting with the Yorkshire Dragonfly Group, in the company of Keith Gittens and Bill Hall.

The visit to Boltby Reservoir was enjoyable, although with it being an overcast day the number of dragonflies and damselflies on the wing was kept low for the most part. There were one or two short intervals when the sun came out and the reservoir showed a bit more life and the potential it had for a really good sunny day.

Of great interest was the tremendous work that the YDG had carried out, together with a few other interested bodies, in clearing a lot of self seeded conifers from around the banks of the old reservoir. They were looking as though they may spoil an excellent site for both botany and dragonflies, but it now looks good for a number of years yet.

We had the opportunity to walk the entire circumference of the reservoir and appreciate its archaeology and envisage it as it would have been in its heyday, with what was left of the old dam wall and its overfills, probably dating from Victorian times at a guess.

Wednesday 18th August 10:30am. Newsham Grange (NZ382106).**Leader, Andrew Ferguson.**

The Club enjoyed a pleasant walk from Newsham Grange to Middleton One Row and back again. The stretch by the side of the river was a bit disappointing as the vegetation had all been cut back in what looked like just a week or two before our walk, so depriving us of the opportunity to see easily what was present botanically and perhaps enjoy a few more insects than we actually found.

One thing out of the ordinary, not really for these proceedings but worthy of note anyway, was a slowly deteriorating English Electric F1 Lightning jet fighter in a farmyard on the opposite bank of the river from that we were walking. Not something you see every day!

With thanks to Daphne Aplin for supplying the following records of some of the findings on the walk.

Plagiognathus arbustorum (Miridae, Hemiptera)

Green Shieldbug *Palomena prasina* x3 nymphs (Hemiptera)

Eupteryx urticae Leafhopper (Hemiptera)

Pale Straw Pearl *Udea lutealis* (Lepidoptera)

European Mole *Talpa europaea* (Insectivora)

A caddisfly *Mystacides* species (Trichoptera) (photo attached)

Marmalade Hoverfly *Episyrphus balteatus* (Diptera)

Oedemera lurida (Coleoptera)

Harlequin Ladybird *Harmonia axyridis* x12 (Coleoptera)

Twenty two-spot Ladybird - *Psyllobora vigintiduopunctata* (Coleoptera)

Wednesday 25th August 11:00am. Danby Head and Great Fryup Dale (NZ697013).**Leader, Alan Simkins.**

Wednesday 1st September 10:30am. Nosterfield Nature reserve (SE278795).

Leaders, Peter and Ruth Waterton.

Eight members met leaders Peter and Ruth Waterton at the main car park where the weather was dry but cloudy. Managed by the Lower Ure Conservation Trust this 150 acre site of old sand and gravel works is one of Yorkshires finest wetlands. Primarily known as a birding site there is also plenty of interest in other fields of natural history.

The birds seen included two Greenshank (*Tringa nebularia*), one Black-tailed Godwit (*Limosa limosa*), ten Dunlin (*Calidris alpina*), one Golden Plover (*Pluvialis apricaria*) and a few Ringed Plover (*Charadrius hiaticula*). There was also a fleeting glimpse of a Hobby (*Falco subbuteo*) as it flew past a view point.

In the car park Ruth noted some Burnet Saxifrage (*Pimpinella saxifraga*).

Walking along the main path one lake was seen to have dried up, the water levels were generally very low. Much of the flora was over but there were large numbers of various seed-heads. Flowers seen included Field Scabious (*Knautia arvensis*), Blue Fleabane (*Erigeron acris*), Square-stalked St John's-wort (*Hypericum tetrapterum*), Hairy St John's-wort (*Hypericum hirsutum*) and Perforate St John's-wort (*Hypericum perforatum*). The seed heads of Teasel (*Dipsacus fullonum*) were prominent. Some Sticky Groundsel (*Senecio viscosus*) was found and one plant of Asparagus (*Asparagus officinalis*) seen. Huge numbers of ripe Sloes (*Prunus spinosa*) were noted.

Lepidoptera were few with just Speckled Wood (*Parage aegeria*) and Small Tortoiseshell (*Aglais urticae*) noted. For Odonata many Common Darter (*Sympetrum striolatum*) posed for photographers on a fence.

Thanks to Daphne Aplin for the following list of miscellaneous insects seen. Dozens of Common Green Shieldbug adults and nymphs (*Palomina prasina*), one Red-legged Shieldbug (*Pentatoma rufipes*), one Hairy Shieldbug (*Dolycoris baccarum*), two *Deraeocoris* (a Mirid bug), three Seven-spot Ladybirds (*Coccinella septempunctata*), two Common Froghoppers (*Philaenus spumarius*) and one Bloody-nosed Beetle (*Timarcha tenebricosa*).

Altogether an enjoyable outing helped by the sun appearing after lunch.

Wednesday 15th September 10:30am. National Centre for Birds of Prey (SE603834).

Leader, Neil Baker.

Ever since Charlie Heap from the NCBP in Helmsley gave the Club a talk at one of our winter session indoor meetings, we have been trying to visit the centre to see their flying displays.

We have been unlucky for the previous two years, when the days we selected for our visits both had appalling weather and so we had to cancel them. However, in 2021 we eventually found we had managed to schedule our visit on a nice fine day.

There are three different flying displays scheduled each day. We were hoping to perhaps use the free time between each one to have a look around that National Nature Reserve grounds of Duncombe Park as well. However, the timing of the displays was such that having a good walk

around the grounds was not possible without missing some of the displays, so only short forays into the nearby woods were possible for the most part.

The flying displays did not disappoint and they provided good opportunities for Club members interested in photography. The NCBP staff were very knowledgeable on their specialist subject and provided a good commentary with plenty of detail on the birds themselves, as well as giving some amusing anecdotes on their work.

A summary of the birds seen at the flying displays is given below.

First session at 11:00

Common (Eurasian) Buzzard

Asian Brown Wood Owl

Saker Falcon

Burrowing Owl

Grey Buzzard Eagle

Second session at 14:00

European Eagle Owl

Red Footed Falcons (six at once). These were hand reared at home by one of the NCBP staff and consequently were very comfortable mixing with the audience, landing on shoulders and heads just like budgerigars do.

Lanna Falcon

Barn Owl

African Fish Eagle

Third session at 16:15

Long Eared Owl

Lanna Falcon

Harris Hawk

Wahlburg Eagle

Black Kites and Yellow Billed Kites (a mix of five at once). Their display attracted the attention of a passing wild Red Kite which also joined in, but not to the same practised extent. Quite impressive to see them all wheeling around together and catching food on the wing after being catapulted into the air (the food that is, not the birds!).

Sunday 31st October 10:30am. Mulgrave Castle (NZ845126).

Leader, Paul Forster.

Gallery of Additional Images From Field Meetings 2021

Mark Stokeld



**Common Blue
Greatham Creek
30.05.2021**

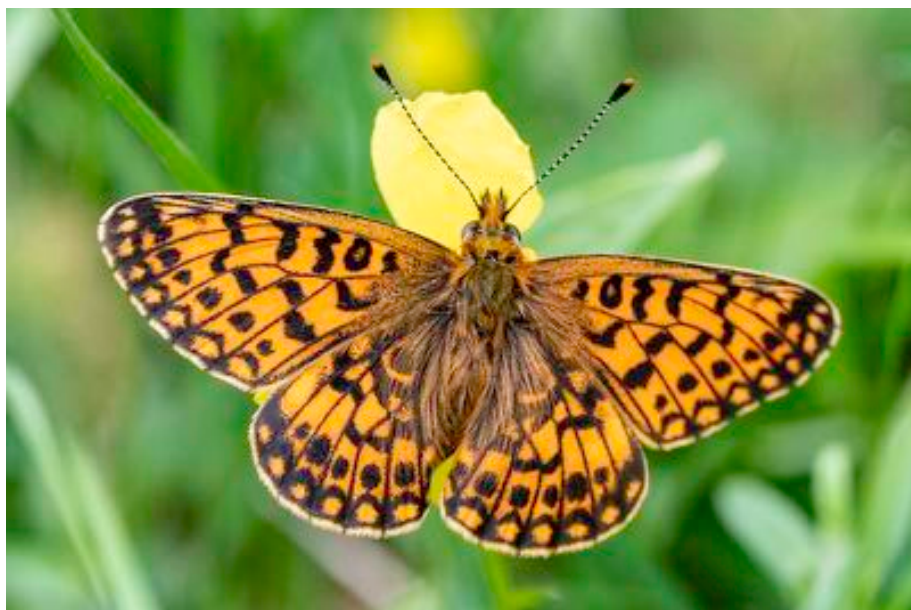


**Dingy Skipper
Greatham Creek
30.05.2021**



**Beautiful Snout
Cawthorn Roman Camp
09.06.2021**

Fly Orchid
Yatts Farm
09.06.2021



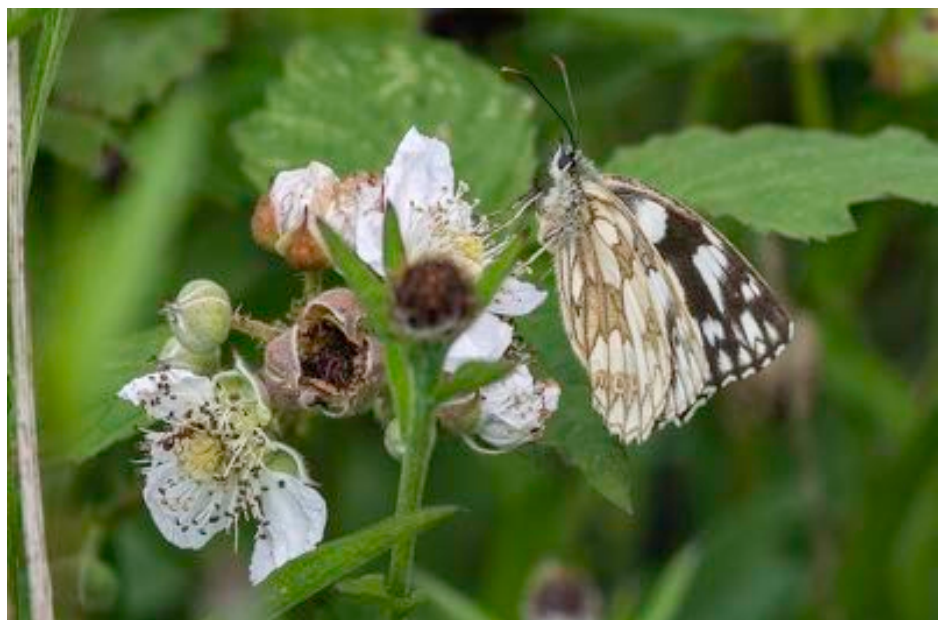
**Small Pearl-bordered
Fritillary**
Yatts Farm
09.06.2021

European Beaver
Cropton
09.06.2021



Dark-green Fritillary
Raisby Hill
07.07.2021

Marbled White
Wingate Quarry
07.07.2021





Sedge Warbler
Coatham Marsh
04.08.2021

Sphaerophoria scripta
Coatham Marsh
04.08.2021



Robin's Pincushion
Coatham Marsh
04.08.2021

Bloody-nosed Beetle
Nosterfield
01.09.2021



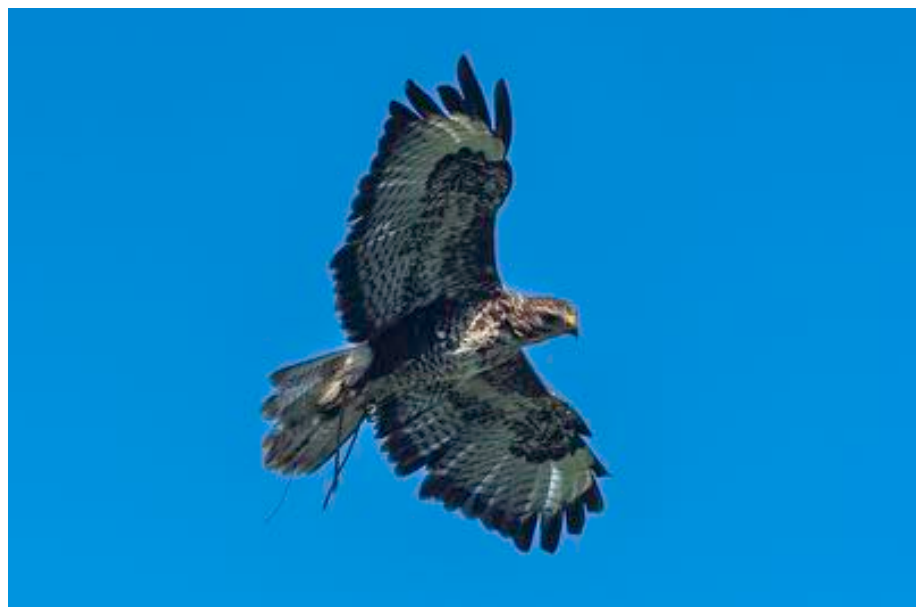
Green Shieldbug
Nosterfield
01.09.2021

Spiked Shieldbug
Nosterfield
01.09.2021





Barn Owl
National Centre for
Birds of Prey
15.09.2021



Buzzard
National Centre for
Birds of Prey
15.09.2021



Eagle Owl
National Centre for
Birds of Prey
15.09.2021

Some Invertebrates Recorded During Field Meetings 2021

A A Wardhaugh

Key: 1 = Yatt's Farm (SE807881) 09.06.2021
 2 = Greatham Creek (NZ509254 to NZ516256) 23.06.2021
 3 = Bowesfield (NZ444165 to NZ434154) 30.06.2021
 4 = Raisby Hill (NZ3335) 07.07.2021
 5 = Coatham Marsh (NZ5824) 04.08.2021

* = Further comments on these species can be found in the relevant field meeting report above.

Taxon	Scientific Name	Common Name (if any)	1	2	3	4	5
Crustacea	<i>Ligia oceanica</i>	Sea Slater		/*			
Coleoptera	<i>Cantharis cryptica</i>				/		
	<i>Cantharis flavilabris</i>				/	/	
	<i>Coccinella 7-punctata</i>	Seven-spot Ladybird					/
	<i>Cryptocephalus aureolus</i>		/*			/*	
	<i>Grammoptera ruficornis</i>					/	
	<i>Harpalus affinis</i>					/	
	<i>Oedemera lurida</i>			/*			
	<i>Phyllobius pomaceus</i>				/		
	<i>Pterostichus madidus</i>	Black Clock Beetle				/	
	<i>Rhagonycha fulva</i>	Black-tipped Soldier Beetle				/	/
Diplopoda	<i>Polydesmus angustus</i>					/	
Mollusca	<i>Arianta arbustorum</i>	Copse Snail			/		
	<i>Arion ater</i> agg.	Large Black/Red Slug			/	/*	
	<i>Arion ater</i> seg.	Large Black Slug				/*	
	<i>Arion subfuscus</i>	Dusky Slug			/		
	<i>Ceruella virgata</i>	Striped Snail		/			/
	<i>Cepaea hortensis</i>	White-lipped Snail			/*	/	
	<i>Cepaea nemoralis</i>	Brown-lipped Snail		/	/	/	/
	<i>Cochlicopa</i> sp.	Moss Snail				/	
	<i>Cornu aspersum</i>	Common Snail			/	/	
	<i>Discus rotundatus</i>	Rounded Snail					/
	<i>Merdigera obscura</i>	Lesser Bulin		/*			
	<i>Monacha cantiana</i>	Kentish Snail			/	/	/
	<i>Succinea putris</i>	Amber Snail			/		
	<i>Trochulus hispidus</i>	Hairy Snail				/	
	<i>Trochulus striolatus</i>	Strawberry Snail			/		/
	<i>Vallonia excentrica</i>	Eccentric Snail					/
	<i>Xeroplexa intersecta</i>	Wrinkled Snail					/

**A further look at the invertebrates of Cowpen Bewley Woodland Park 2021
(NZ476250 – NZ483256)**

Daphne Aplin

Order	Common name (if any)	Scientific Name
Hemiptera		<i>Alebra albostriatella</i>
		<i>Amblytylus nasutas F.</i>
		<i>Apolygus spinolai F.</i>
		<i>Atractotomus sp. M&F.</i>
		<i>Charagochilus gyllenhalii</i>
		<i>Eurybregma nigrolineata F.</i>
		<i>Neolygus contaminatus</i>
		<i>Orius laticollis F.</i>
		<i>Pinalitus rubricatus</i>
Araneae		<i>Parasteatoda lunata</i>
Coleoptera		<i>Byturus ochraceus</i>
		<i>Crepidodera aurea</i>
	Pine Ladybird	<i>Exochomus quadripustulatus</i>
		<i>Grammoptera ruficornis F.</i>
	Adonis Ladybird	<i>Hippodamia variegata</i>
		<i>Isochnus sequensi</i>
		<i>Laricobius erichsonii</i>
		<i>Oxystoma subulatum</i>
		<i>Philonthus decorus</i>
		<i>Phloiophilus edwardsii</i>
		<i>Silpha tristis</i>
Diptera		<i>Epistrophe eligans M.</i>
		<i>Eristalinus aeneus F.</i>
		<i>Eristalinus sepulchralis M.</i>
		<i>Dasysyrphus albostriatatus M.</i>
		<i>Eupeodes luniger F.</i>

	Chequered Hoverfly	<i>Melanostoma scalare F.</i>
	Narcissus Bulb Fly	<i>Merodon equestris M.</i>
		<i>Parasyrphus nigrirarsis M.</i>
		<i>Parasyrphus punctulatus M&F.</i>
		<i>Psectrotanypus varius</i>
		<i>Sphaerophoria interrupta</i>
Hymenoptera		<i>Aglaostigma fulvipes</i>
	Curled Rose Sawfly	<i>Allantus cinctus F.</i>
		<i>Apechthis rufata F.</i>
		<i>Apechthis quadridentata F.</i>
		<i>Earinus elator M.</i>

Ladybirds at Cowpen Bewley Woodland Park, Billingham: Update 2021

Daphne Aplin

Tiny splashes of colour spotted within the undergrowth or on trees, often turn out to be ladybirds. To me these lovely creatures are a particular delight to see and always make me smile.

While the year of 2021 has proven to be an *annus horribilis* for everyone, I can say the year has been exceptional with regards to personal sightings of ladybirds.

Whether it was simply my good fortune to be in the right place at the right time, or I had inadvertently stumbled upon genuine migratory species, I'll obviously never know. Whichever the case, I have been remarkably fortunate to encounter three previously unrecorded species of ladybird in the park.

While all are exciting in their own right, what is possibly more exciting and of global significance concerning these sightings, is that collectively they represent a very encouraging 25% increase of species known in the park on the previous total of 12 (see below).

I swept the first specimen off a pine tree on 5/3/2021. It measured 3.5mm and displayed four red spots on black elytra. The first two spots being rather "comma" shaped. It was later confirmed by John Muggleton to be, aptly enough, a Pine Ladybird (*Exochomus quadripustulatus*).

On 5/9/2021 I was again pleasantly surprised when I came across another "new" species. This pretty little 4mm beetle was scurrying about on the bark of an Ash tree. This was identified as an Adonis Ladybird (*Hippodamia variegata*).

The third one was a much bigger surprise. Thinking I was probably going to be housebound for a couple of days because of Storm Arwen I popped over to the park to see if I could find something that I could take home to study. A "sweep" of the grass netted what I thought was a tiny Leaf Beetle but there was just something "different" about it. I was delighted that this turned out to be one of the Inconspicuous Ladybirds a Pointed-keeled Rhizobius (*Rhizobius litura*).

I have only ever encountered an Inconspicuous Ladybird once before when I saw the larva of the Purple Scale Predator (*Rhizobius lophanthae*) grazing on lichen on an ash tree in 2018 in the same park.

Looking back over the years I suppose the most frequently seen ladybirds at Cowpen are the 7-spot (*Coccinella septempunctata*) and 22-spot (*Psyllobora vigintiduopunctata*). Although the small ash wood behind the (now closed) Visitor Centre did have a healthy colony of Kidney-spot Ladybirds (*Chilocoris renipustulatus*). Unfortunately, the long-term outlook for this colony is not encouraging. Due to the ongoing ravages of ash die-back which has severely affected the park's ash woodland and with the added havoc caused to the already dying trees by Storm Arwen, it will be interesting to see what next year brings. However, if the overall perceived increase in known species is a genuine reflection of greater diversity, then the future of the park is far from one of doom and gloom and augurs well for many more "firsts" in the future!

Table of Coccinellidae recorded at CBWP (Grid Ref: NZ472255-NZ485258) since 2000

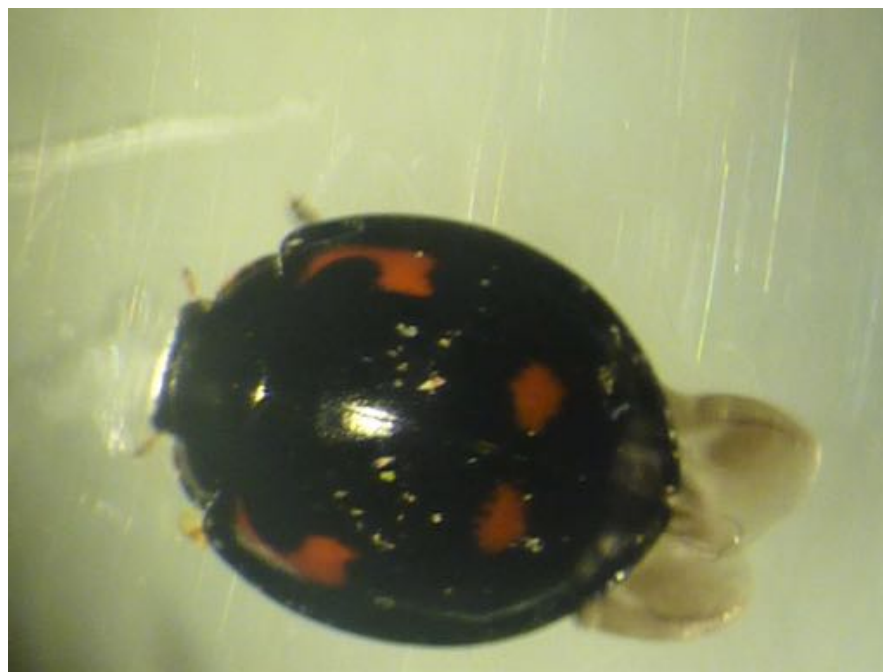
Vernacular Name	Scientific Name
2-spot	<i>Adalia bipunctata</i>
10-spot	<i>Adalia decempunctata</i>
Water	<i>Anisosticta novemdecimpunctata</i>
Larch	<i>Aphidecta oblitterata</i>
Cream-spot	<i>Calvia quatuordecimguttata</i>
Kidney-spot	<i>Chilocoris renipustulatus</i>
7-spot	<i>Coccinella septempunctata</i>
Orange	<i>Halyzia sedecimguttata</i>
Harlequin	<i>Harmonia axyridis</i>
14-spot	<i>Propylea quatuordecimpunctata</i>
Purple Scale Predator (Larva)	<i>Rhizobius lophanthae</i>
22-spot	<i>Psyllobora vigintiduopunctata</i>
Pine	<i>Exochomus quadripustulatus</i>
Adonis	<i>Hippodamia variegata</i>
Pointed-keeled Rhizobius	<i>Rhizobius litura</i>



Hippodamia variegata
Adonis Ladybird



Rhizobius litura
Pointed-keeled Rhizobius



Exochomus quadripustulatus
Pine Ladybird

Interesting invertebrate sightings on Teesside 2021

Daphne Aplin

Date	Grid Ref.	Location	Family	Species
16.03.2021	NZ489259	Greatham railway embankment	Piesmatidae	<i>Parapiesma quadratum</i>
31.03.2021	NZ528292	Seaton Carew	Curculionidae	<i>Sitona lineatus</i>
27.05.2021	NZ454238	Billingham garden	Dermestidae	<i>Attagenus pellio</i>
23.06.2021	NZ507250	Greatham Creek	Coccinellidae	<i>Coccinella undecimpunctata</i>
19.07.2021	NZ466196	Portrack Marsh	Rhopalidae	<i>Stictopleuris punctatonervosus</i>
11.08.2021	NZ401278	Tilery Wood	Rhopalidae	<i>Rhopalus subrufus</i> (nymph)
03.09.2021	NZ404240	Castle Eden Walkway	Reduviidae	<i>Empicoris vagabundus</i>

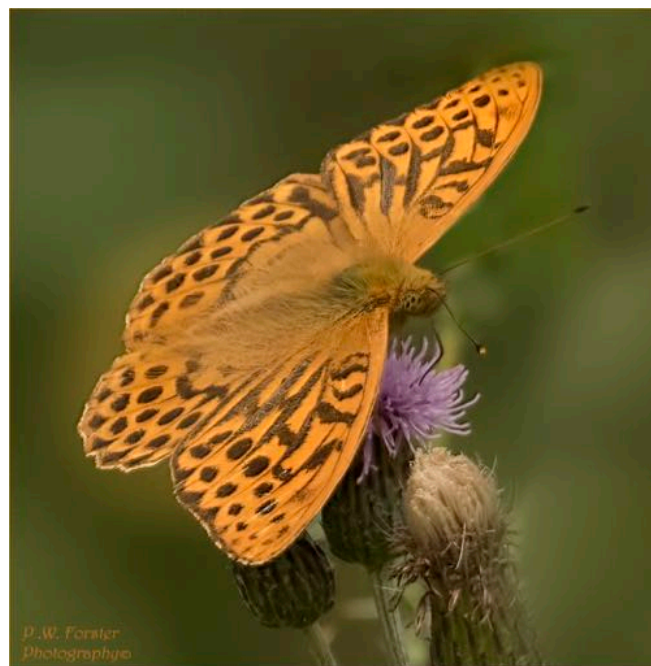
Silver-washed Fritillaries at Mulgrave Castle

P W Forster

Whilst visiting Mulgrave Castle on the 1st August 2021, NZ8442 VC62, I came across a single individual Silver-washed Fritillary (*Argynnis paphia*) nectaring on Buddleia (*Buddleja davidii*). This was a new species for the site and certainly a surprise. On further investigation I found on the Butterfly Conservation website that two other individuals had been reported in and around the Whitby area.



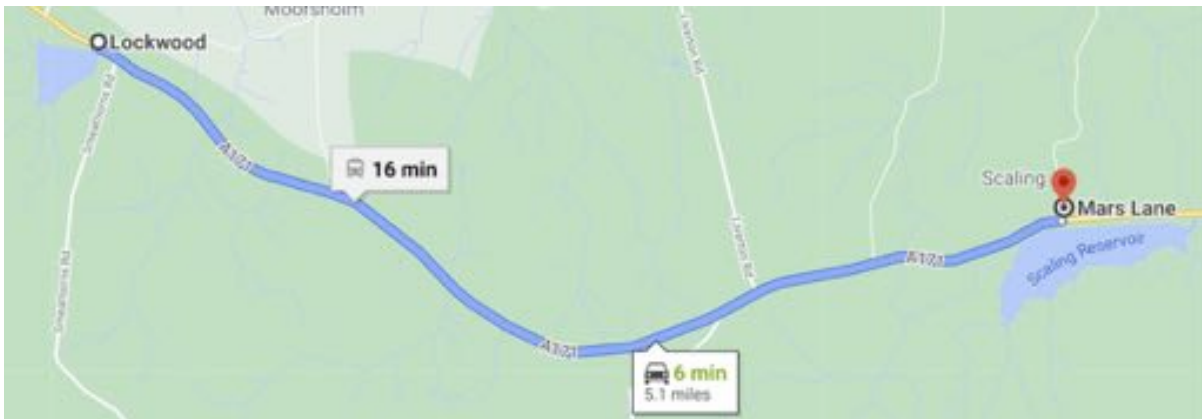
A week later on 8th of August 2021 whilst visiting Tilery Woods, NZ401283 VC66, another three Silver-washed Fritillaries were observed nectaring on Creeping Thistle (*Cirsium arvense*). This is 37.4 miles North of Mulgrave Castle. The general consensus is that this species is moving north. The food plant is Common dog-violet (*Viola riviniana*) which is abundant at both sites.



Some observations on Barn Owls 2020 - 2021

P W Forster

From 6th to 31st January 2021 I spent most mornings and evenings observing Barn Owls (*Tyto alba*) from Lockwood Beck to Scaling Dam.



I have, on the 5.1 mile stretch, counted in one morning six in total. It has been an extraordinary year for Barn Owls with sightings at Magrove Park (two), South Gare (one), Guisborough fields above Belmangate (two), Pinchinthorpe (one), and Skelton Fields near Asda (two).

These are my observations, but I have information from local birdwatchers who have also had sightings around their local patch in East Cleveland.

One of the owls is ringed, presumably a pullus from one of the many nest boxes now erected in farm buildings along this 5.1 mile stretch. I have noticed the ring on the left leg, but can read only part of the number. This bird has been at the Liverton Mines turn-off as well as the Lockwood site.

According to the Guardian newspaper, up to 80% of these birds now use man-made nest boxes; this would probably account for the increase in numbers.

The figures below show the number of ringed pulli from the South Cleveland Ringing Group from 2006 to 2020, a definite upward trend.

It will be interesting to see if the expanding population can survive on the resident rodent population and with the milder weather over the years which can only be of benefit to the owl's survival.

The East Cleveland Barn Owl Nest Box Scheme Network has probably had a significant impact on the breeding success of the Barn Owls in East Cleveland.

Many thanks to Colin Gibson for the use of his report, to the Tees Valley Wildlife Trust and the South Cleveland Ringing Group.

Year	Number Ringed
2006	5
2007	7
2008	19
2009	8
2010	18
2011	10
2012	21
2013	7
2014	42
2015	41
2016	38
2017	38
2018	89
2019	84
2020	86
Total	513





Leopard Moth *Zeuzera pyrina****P W Forster***

This species was recorded on two dates at two regular locations in 2021, a new moth for both locations. These are:

Mulgrave Castle VC62 NZ86412 on 19.07.2021

Guisborough VC62 NZ617153 on 10.08.2021

Single-brooded, flying from late June to early August, it inhabits woods, gardens, parklands and orchards. The larvae feed on stems and branches of a wide variety of trees and shrubs emerging to pupate from August to May of the third year. It overwinters twice or three times as a larva and is sometimes a pest on fruit trees.

The county has a total of 266 records from 157 sites. First recorded in 1876.



Leopard Moth *Zeuzera Pyrina* 10.08.21 Guisborough

The Orange Cup, *Melastiza cornubienis*, at Lockwood Beck, Cleveland

P W Forster

Due to structural erosion of the east side of the reservoir banking at Lockwood Beck (NZ670140) extensive work was started in spring 2020 which continued through to spring 2021. This resulted in the site being closed to the general public.

On 14.11.2021 I came across the Orange Cup *Melastiza cornubienis* situated on the east side of the reservoir; it has been six years since I last encountered this particular fungus.

Classified as a member of the Ascomycetes it is found on humus-rich soil in broadleaved woods, grasslands, fields and kitchen gardens.

CATE2 (Fungus Conservation Trust database) records total 159 in the UK, 20 in VC62.



The image above shows the dam wall. The fungi were abundant on the left-hand side, seeming to favour the bare patches in the soil of reinforcing mats.



Well developed fruiting bodies were present on 14.11.2021; the fungi were particularly abundant on this particular day. They were still present but in smaller numbers on 29.12.2021

Ref: *Collins Complete Guide to British Mushrooms & Toadstools*. Paul Sterry & Barry Hughes.

Moth Records 2021

P W Forster

	Moths Records 2021			
	P W Forster			
	Middleton Drive, Guisborough			
	NZ617153 (VC62)			
Code	Scientific Name	Vernacular Name	No.	Date
73.342	<i>Noctua pronuba</i>	Large Yellow Underwing	10	8-Sep-21
73.345	<i>Noctua comes</i>	Lesser Yellow Underwing	8	8-Sep-21
73.187	<i>Agrochola litura</i>	Brown-spot Pinion	1	8-Sep-21
49.039	<i>Epiphyas postvittana</i>	Light Brown Apple Moth	6	8-Sep-21
49.039	<i>Epiphyas postvittana</i>	Light Brown Apple Moth	4	6-Sep-21
70.097	<i>Dysstroma truncata</i>	Common Marbled Carpet	1	6-Sep-21
70.049	<i>Xanthorhoe fluctuata</i>	Garden Carpet	2	6-Sep-21
73.345	<i>Noctua comes</i>	Lesser Yellow Underwing	3	6-Sep-21
73.342	<i>Noctua pronuba</i>	Large Yellow Underwing	2	6-Sep-21
73.113	<i>Phlogophora meticulosa</i>	Angle Shades	1	6-Sep-21
	<i>Amphipyra pyramidea</i> agg.	Copper Underwing agg.	1	6-Sep-21
73.342	<i>Noctua pronuba</i>	Large Yellow Underwing	15	28-Aug-21
49.039	<i>Epiphyas postvittana</i>	Light Brown Apple Moth	6	28-Aug-21
73.187	<i>Agrochola litura</i>	Brown-spot Pinion	1	28-Aug-21
73.345	<i>Noctua comes</i>	Lesser Yellow Underwing	8	28-Aug-21
73.351	<i>Graphiphora augur</i>	Double Dart	1	19-Aug-21
73.345	<i>Noctua comes</i>	Lesser Yellow Underwing	20	19-Aug-21
73.342	<i>Noctua pronuba</i>	Large Yellow Underwing	6	19-Aug-21
70.226	<i>Opisthograptis luteolata</i>	Brimstone Moth	1	19-Aug-21
70.283	<i>Campaea margaritaria</i>	Light Emerald	1	19-Aug-21
73.348	<i>Noctua janthe</i>	Lesser Broad-bordered Yellow Underwing	1	19-Aug-21
70.061	<i>Epirrhoe alternata</i>	Common Carpet	2	19-Aug-21
73.325	<i>Agrotis puta</i>	Shuttle-shaped Dart	1	19-Aug-21
70.049	<i>Xanthorhoe fluctuata</i>	Garden Carpet	1	19-Aug-21
	<i>Mesapamea secalis</i> agg.	Common Rustic agg.	2	19-Aug-21

73.293	<i>Mythimna impura</i>	Smoky Wainscot	3	12-Aug-21
73.342	<i>Noctua pronuba</i>	Large Yellow Underwing	8	12-Aug-21
3.001	<i>Triodia sylvina</i>	Orange Swift	4	12-Aug-21
72.013	<i>Euproctis similis</i>	Yellow-tail	1	12-Aug-21
73.348	<i>Noctua janthe</i>	Lesser Broad-bordered Yellow Underwing	8	12-Aug-21
63.058	<i>Evergestis extimalis</i>	a moth	2	12-Aug-21
63.038	<i>Pleuroptya ruralis</i>	Mother of Pearl	1	12-Aug-21
73.137	<i>Arenostola phragmitidis</i>	Fen Wainscot	5	12-Aug-21
73.172	<i>Mesoligia furuncula</i>	Cloaked Minor	3	12-Aug-21
73.171	<i>Litoligia literosa</i>	Rosy Minor	2	12-Aug-21
73.12	<i>Eremobia ochroleuca</i>	Dusky Sallow	1	12-Aug-21
73.015	<i>Autographa gamma</i>	Silver Y	1	12-Aug-21
73.357	<i>Xestia xanthographa</i>	Square-spot Rustic	2	12-Aug-21
70.187	<i>Eupithecia icterata</i>	Tawny Speckled Pug	1	12-Aug-21
73.151	<i>Globia sparganii</i>	Webb's Wainscot	3	12-Aug-21
	<i>Euxoa tritici/obelisca</i>	White-line Dart/Square-spot Dart	2	12-Aug-21
72.044	<i>Eilema griseola</i>	Dingy Footman	1	12-Aug-21
73.022	<i>Plusia festucae</i>	Gold Spot	2	12-Aug-21
63.115	<i>Acentria ephemerella</i>	Water Veneer	1	12-Aug-21
70.061	<i>Epirrhoe alternata alternata</i>	Common Carpet	1	12-Aug-21
73.358	<i>Xestia sexstrigata</i>	Six-striped Rustic	3	12-Aug-21
73.325	<i>Agrotis puta</i>	Shuttle-shaped Dart	2	12-Aug-21
66.01	<i>Euthrix potatoria</i>	Drinker	9	12-Aug-21
73.353	<i>Xestia baja</i>	Dotted Clay	1	12-Aug-21
49.109	<i>Agapeta hamana</i>	a moth	1	12-Aug-21
72.045	<i>Eilema lurideola</i>	Common Footman	1	12-Aug-21
70.15	<i>Eupithecia linariata</i>	Toadflax Pug	2	12-Aug-21
73.084	<i>Bryophila domestica</i>	Marbled Beauty	1	12-Aug-21
70.173	<i>Eupithecia centaureata</i>	Lime-speck Pug	1	12-Aug-21
73.162	<i>Apamea monoglypha</i>	Dark Arches	3	12-Aug-21
	<i>Mesapamea secalis</i> agg.	Common Rustic agg.	1	12-Aug-21
73.131	<i>Luperina testacea</i>	Flounced Rustic	10	12-Aug-21
73.346	<i>Noctua interjecta</i>	Least Yellow Underwing	4	12-Aug-21
70.045	<i>Scotopteryx chenopodiata</i>	Shaded Broad-bar	1	12-Aug-21
70.234	<i>Ennomos alniaria</i>	Canary-shouldered Thorn	1	12-Aug-21
70.258	<i>Peribatodes rhomboidaria</i>	Willow Beauty	1	12-Aug-21
73.345	<i>Noctua comes</i>	Lesser Yellow Underwing	2	12-Aug-21
70.061	<i>Epirrhoe alternata</i>	Common Carpet	1	10-Aug-21
	<i>Mesapamea secalis</i> agg.	Common Rustic agg.	2	10-Aug-21

50.002	<i>Zeuzera pyrina</i>	Leopard Moth	1	10-Aug-21
73.342	<i>Noctua pronuba</i>	Large Yellow Underwing	4	10-Aug-21
49.338	<i>Cydia pomonella</i>	Codling Moth	6	10-Aug-21
63.089	<i>Agriphila tristella</i>	a moth	8	10-Aug-21
73.346	<i>Noctua interjecta</i>	Least Yellow Underwing	1	10-Aug-21
73.162	<i>Apamea monoglypha</i>	Dark Arches	1	10-Aug-21
73.345	<i>Noctua comes</i>	Lesser Yellow Underwing	1	10-Aug-21
73.254	<i>Cerapteryx graminis</i>	Antler Moth	1	10-Aug-21
63.08	<i>Chrysoteuchia culmella</i>	Garden Grass-veneer	6	10-Aug-21
73.348	<i>Noctua janthe</i>	Lesser Broad-bordered Yellow Underwing	2	10-Aug-21
73.162	<i>Apamea monoglypha</i>	Dark Arches	5	2-Aug-21
73.001	<i>Abrostola tripartita</i>	Spectacle	1	2-Aug-21
73.017	<i>Autographa jota</i>	Plain Golden Y	2	2-Aug-21
73.342	<i>Noctua pronuba</i>	Large Yellow Underwing	4	2-Aug-21
63.08	<i>Chrysoteuchia culmella</i>	Garden Grass-veneer	1	2-Aug-21
73.361	<i>Xestia triangulum</i>	Double Square-spot	1	2-Aug-21
	<i>Mesapamea secalis</i> agg.	Common Rustic agg.	2	2-Aug-21
70.016	<i>Idaea aversata</i> ab. <i>remutata</i>	Riband Wave [non-banded form]	8	23-Jul-21
73.342	<i>Noctua pronuba</i>	Large Yellow Underwing	6	23-Jul-21
72.045	<i>Eilema lurideola</i>	Common Footman	3	23-Jul-21
70.226	<i>Opisthocraptis luteolata</i>	Brimstone Moth	2	23-Jul-21
70.1	<i>Colostygia pectinataria</i>	Green Carpet	1	23-Jul-21
73.084	<i>Bryophila domestica</i>	Marbled Beauty	1	23-Jul-21
70.258	<i>Peribatodes rhomboidaria</i>	Willow Beauty	2	23-Jul-21
73.162	<i>Apamea monoglypha</i>	Dark Arches	2	23-Jul-21
	<i>Hoplodrina alsines/blanda</i>	Uncertain/Rustic agg.	1	23-Jul-21
70.243	<i>Ourapteryx sambucaria</i>	Swallow-tailed Moth	1	19-Jul-21
70.147	<i>Eupithecia tenuiata</i>	Slender Pug	1	19-Jul-21
73.361	<i>Xestia triangulum</i>	Double Square-spot	1	19-Jul-21
63.064	<i>Scoparia ambigualis</i> f. <i>atomalis</i>	a moth	1	19-Jul-21
73.162	<i>Apamea monoglypha</i>	Dark Arches	2	19-Jul-21
63.038	<i>Pleuroptya ruralis</i>	Mother of Pearl	1	19-Jul-21
73.174	<i>Oligia latruncula</i>	Tawny Marbled Minor	4	19-Jul-21
70.016	<i>Idaea aversata</i> ab. <i>remutata</i>	Riband Wave [non-banded form]	2	19-Jul-21
72.003	<i>Hypena proboscidalis</i>	Snout	1	19-Jul-21
70.265	<i>Alcis repandata</i>	Mottled Beauty	1	19-Jul-21
65.009	<i>Habrosyne pyritoides</i>	Buff Arches	3	19-Jul-21

63.074	<i>Eudonia mercurella</i>	a moth	2	19-Jul-21
73.342	<i>Noctua pronuba</i>	Large Yellow Underwing	3	19-Jul-21
20.012	<i>Argyresthia goedartella</i>	a moth	1	19-Jul-21
49.004	<i>Ditula angustiorana</i>	Red-barred Tortrix	3	19-Jul-21
63.08	<i>Chrysoteuchia culmella</i>	Garden Grass-veneer	4	19-Jul-21
49.038	<i>Clepsis consimilana</i>	a moth	1	19-Jul-21
18.001	<i>Plutella maculipennis</i>	Diamond-back Moth	1	19-Jul-21
49.367	<i>Pammene fasciana</i>	a moth	1	19-Jul-21
49.255	<i>Epinotia nisella</i>	a moth	1	19-Jul-21
72.055	<i>Herminia grisealis</i>	Small Fan-foot	2	19-Jul-21
73.097	<i>Hoplodrina blanda</i>	Rustic	1	16-Jul-21
49.109	<i>Agapeta hamana</i>	a moth	1	16-Jul-21
73.015	<i>Autographa gamma</i>	Silver Y	1	16-Jul-21
70.252	<i>Biston betularia</i>	Peppered Moth	1	16-Jul-21
73.163	<i>Apamea lithoxylaea</i>	Light Arches	2	16-Jul-21
70.214	<i>Macaria liturata</i>	Tawny-barred Angle	2	16-Jul-21
70.205	<i>Abraxas grossulariata</i>	Magpie Moth	1	16-Jul-21
73.017	<i>Autographa jota</i>	Plain Golden Y	1	16-Jul-21
63.02	<i>Anania perlucidalis</i>	a moth	1	16-Jul-21
73.293	<i>Mythimna impura</i>	Smoky Wainscot	10	16-Jul-21
63.08	<i>Chrysoteuchia culmella</i>	Garden Grass-veneer	20	16-Jul-21
35.038	<i>Bryotropha domestica</i>	a moth	1	16-Jul-21
28.01	<i>Hofmannophila pseudospretella</i>	Brown House-moth	1	16-Jul-21
16.001	<i>Yponomeuta evonymella</i>	Bird-cherry Ermine	1	16-Jul-21
73.131	<i>Luperina testacea</i>	Flounced Rustic	1	16-Jul-21
63.067	<i>Eudonia lacustrata</i>	a moth	1	16-Jul-21
72.024	<i>Phragmatobia fuliginosa</i>	Ruby Tiger	1	16-Jul-21
72.019	<i>Spilosoma lutea</i>	Buff Ermine	2	16-Jul-21
73.298	<i>Mythimna ferrago</i>	Clay	1	16-Jul-21
70.093	<i>Gandaritis pyraliata</i>	Barred Straw	2	16-Jul-21
65.009	<i>Habrosyne pyritoides</i>	Buff Arches	6	16-Jul-21
69.017	<i>Deilephila porcellus</i>	Small Elephant Hawk-moth	1	16-Jul-21
73.162	<i>Apamea monoglypha</i>	Dark Arches	3	16-Jul-21
72.003	<i>Hypena proboscidalis</i>	Snout	2	16-Jul-21
73.328	<i>Axylia putris</i>	Flame	2	16-Jul-21
73.322	<i>Agrotis vestigialis</i>	Archer's Dart	2	16-Jul-21
66.01	<i>Euthrix potatoria</i>	Drinker	3	16-Jul-21
73.084	<i>Bryophila domestica</i>	Marbled Beauty	1	16-Jul-21
73.174	<i>Oligia latruncula</i>	Tawny Marbled Minor	3	16-Jul-21

70.207	<i>Lomaspilis marginata</i>	Clouded Border	1	16-Jul-21
73.342	<i>Noctua pronuba</i>	Large Yellow Underwing	3	16-Jul-21
	<i>Hoplodrina alsines/blanda</i>	Uncertain/Rustic agg.	1	16-Jul-21
63.069	<i>Eudonia angustea</i>	a moth	1	16-Jul-21
70.243	<i>Ourapteryx sambucaria</i>	Swallow-tailed Moth	2	16-Jul-21
73.174	<i>Oligia latruncula</i>	Tawny Marbled Minor	2	14-Jul-21
70.226	<i>Opisthograptis luteolata</i>	Brimstone Moth	2	14-Jul-21
63.02	<i>Anania perlucidalis</i>	a moth	1	14-Jul-21
63.074	<i>Eudonia mercurella</i>	a moth	2	14-Jul-21
73.017	<i>Autographa jota</i>	Plain Golden Y	1	14-Jul-21
18.001	<i>Plutella maculipennis</i>	Diamond-back Moth	3	14-Jul-21
73.015	<i>Autographa gamma</i>	Silver Y	4	14-Jul-21
65.009	<i>Habrosyne pyritoides</i>	Buff Arches	1	14-Jul-21
45.01	<i>Amblyptilia acanthadactyla</i>	Beautiful Plume	1	14-Jul-21
73.328	<i>Axylia putris</i>	Flame	1	14-Jul-21
70.258	<i>Peribatodes rhomboidaria</i>	Willow Beauty	3	14-Jul-21
73.162	<i>Apamea monoglypha</i>	Dark Arches	8	14-Jul-21
70.144	<i>Pasiphila rectangulata</i>	Green Pug	1	14-Jul-21
63.08	<i>Chrysoteuchia culmella</i>	Garden Grass-veneer	4	14-Jul-21
72.003	<i>Hypena proboscidalis</i>	Snout	3	14-Jul-21
73.04	<i>Acronicta leporina</i>	Miller	1	14-Jul-21
69.016	<i>Deilephila elpenor</i>	Elephant Hawk-moth	1	14-Jul-21
70.243	<i>Ourapteryx sambucaria</i>	Swallow-tailed Moth	4	14-Jul-21
73.084	<i>Bryophila domestica</i>	Marbled Beauty	2	14-Jul-21
71.021	<i>Ptilodon capucina</i>	Coxcomb Prominent	2	9-Jul-21
73.352	<i>Anaplectoides prasina</i>	Green Arches	2	9-Jul-21
73.338	<i>Lycophotia porphyrea</i>	True Lover's Knot	1	9-Jul-21
73.012	<i>Diachrysia chrysitis</i>	Burnished Brass	1	9-Jul-21
	<i>Acronicta tridens/psi</i>	Dark Dagger / Grey Dagger	1	9-Jul-21
73.332	<i>Diarsia brunnea</i>	Purple Clay	6	9-Jul-21
73.361	<i>Xestia triangulum</i>	Double Square-spot	2	9-Jul-21
65.008	<i>Thyatira batis</i>	Peach Blossom	1	9-Jul-21
72.045	<i>Eilema lurideola</i>	Common Footman	1	9-Jul-21
72.019	<i>Spilosoma lutea</i>	Buff Ermine	1	9-Jul-21
73.174	<i>Oligia latruncula</i>	Tawny Marbled Minor	3	9-Jul-21
73.329	<i>Ochropleura plecta</i>	Flame Shoulder	1	9-Jul-21
70.277	<i>Cabera pusaria</i>	Common White Wave	1	9-Jul-21
70.252	<i>Biston betularia</i>	Peppered Moth	2	9-Jul-21
73.114	<i>Euplexia lucipara</i>	Small Angle Shades	1	9-Jul-21
66.01	<i>Euthrix potatoria</i>	Drinker	2	9-Jul-21

73.162	<i>Apamea monoglypha</i>	Dark Arches	2	9-Jul-21
63.08	<i>Chrysoteuchia culmella</i>	Garden Grass-veneer	8	9-Jul-21
65.009	<i>Habrosyne pyritoides</i>	Buff Arches	4	9-Jul-21
69.016	<i>Deilephila elpenor</i>	Elephant Hawk-moth	1	9-Jul-21
49.025	<i>Pandemis cerasana</i>	Barred Fruit-tree Tortrix	1	9-Jul-21
73.016	<i>Autographa pulchrina</i>	Beautiful Golden Y	6	9-Jul-21
70.276	<i>Bupalus piniaria</i>	Bordered White	1	9-Jul-21
41.003	<i>Blastobasis lacticolella</i>	a moth	3	9-Jul-21
73.267	<i>Lacanobia oleracea</i>	Bright-line Brown-eye	1	9-Jul-21
62.028	<i>Dioryctria abietella</i>	a moth	1	9-Jul-21
49.004	<i>Ditula angustiorana</i>	Red-barred Tortrix	1	9-Jul-21
70.265	<i>Alcis repandata</i>	Mottled Beauty	2	9-Jul-21
72.055	<i>Herminia grisealis</i>	Small Fan-foot	1	9-Jul-21
73.261	<i>Polia nebulosa</i>	Grey Arches	2	9-Jul-21
70.214	<i>Macaria liturata</i>	Tawny-barred Angle	1	9-Jul-21
63.037	<i>Udea olivalis</i>	a moth	1	9-Jul-21
	<i>Hoploclitrus alsines/blanda</i>	Uncertain/Rustic agg.	3	9-Jul-21
73.333	<i>Diarsia mendica</i>	Ingrailed Clay	5	9-Jul-21
49.109	<i>Agapeta hamana</i>	a moth	1	9-Jul-21
49.266	<i>Eucosma hohenwartiana</i>	a moth	1	9-Jul-21
73.271	<i>Ceramia pisi</i>	Broom Moth	1	9-Jul-21
73.342	<i>Noctua pronuba</i>	Large Yellow Underwing	3	9-Jul-21
73.368	<i>Naenia typica</i>	Gothic	1	9-Jul-21
70.049	<i>Xanthorhoe fluctuata</i>	Garden Carpet	1	9-Jul-21
73.317	<i>Agrotis exclamationis</i>	Heart and Dart	5	9-Jul-21
65.009	<i>Habrosyne pyritoides</i>	Buff Arches	3	9-Jul-21
	<i>Hoploclitrus alsines/blanda</i>	Uncertain/Rustic agg.	1	9-Jul-21
73.174	<i>Oligia latruncula</i>	Tawny Marbled Minor	2	9-Jul-21
73.001	<i>Abrostola tripartita</i>	Spectacle	1	9-Jul-21
73.328	<i>Axyia putris</i>	Flame	2	9-Jul-21
73.017	<i>Autographa jota</i>	Plain Golden Y	1	9-Jul-21
70.243	<i>Ourapteryx sambucaria</i>	Swallow-tailed Moth	5	9-Jul-21
70.226	<i>Opisthograptis luteolata</i>	Brimstone Moth	10	9-Jul-21
73.084	<i>Bryophila domestica</i>	Marbled Beauty	2	9-Jul-21
62.001	<i>Aphomia sociella</i>	Bee Moth	2	9-Jul-21
70.016	<i>Idaea aversata ab. remutata</i>	Riband Wave [non-banded form]	1	9-Jul-21
63.034	<i>Udea prunalis</i>	a moth	2	9-Jul-21
73.162	<i>Apamea monoglypha</i>	Dark Arches	6	9-Jul-21

69.003	<i>Laothoe populi</i>	Poplar Hawk-moth	1	9-Jul-21
32.036	<i>Depressaria radiella</i>	Parsnip Moth	1	9-Jul-21
70.258	<i>Peribatodes rhomboidaria</i>	Willow Beauty	1	9-Jul-21
72.055	<i>Herminia grisealis</i>	Small Fan-foot	1	9-Jul-21
70.045	<i>Scotopteryx chenopodiata</i>	Shaded Broad-bar	2	9-Jul-21
70.013	<i>Idaea biselata</i>	Small Fan-footed Wave	1	9-Jul-21
49.004	<i>Ditula angustiorana</i>	Red-barred Tortrix	1	9-Jul-21
73.361	<i>Xestia triangulum</i>	Double Square-spot	2	9-Jul-21
72.055	<i>Herminia grisealis</i>	Small Fan-foot	1	9-Jul-21
70.016	<i>Idaea aversata ab. remutata</i>	Riband Wave [non-banded form]	1	8-Jul-21
73.084	<i>Bryophila domestica</i>	Marbled Beauty	1	8-Jul-21
73.176	<i>Oligia fasciuncula</i>	Middle-barred Minor	4	2-Jul-21
73.333	<i>Diarsia mendica</i>	Ingrailed Clay	1	2-Jul-21
3.003	<i>Hepialus fusconebulosa f. gallicus</i>	Map-winged Swift	1	2-Jul-21
20.021	<i>Argyresthia pruniella</i>	Cherry Fruit Moth	1	2-Jul-21
69.003	<i>Laothoe populi</i>	Poplar Hawk-moth	1	2-Jul-21
49.109	<i>Agapeta hamana</i>	a moth	1	2-Jul-21
45.019	<i>Stenoptilia millieridactyla</i>	Saxifrage Plume	1	2-Jul-21
63.025	<i>Anania hortulata</i>	Small Magpie	1	2-Jul-21
	<i>Hoplodrina alsines/blanda</i>	Uncertain/Rustic agg.	3	2-Jul-21
65.009	<i>Habrosyne pyritoides</i>	Buff Arches	1	2-Jul-21
49.039	<i>Epiphyas postvittana</i>	Light Brown Apple Moth	1	2-Jul-21
73.012	<i>Diachrysia chrysitis</i>	Burnished Brass	1	2-Jul-21
70.013	<i>Idaea biselata</i>	Small Fan-footed Wave	1	2-Jul-21
63.08	<i>Chrysoteuchia culmella</i>	Garden Grass-veneer	1	2-Jul-21
49.342	<i>Cydia fagiglandana</i>	a moth	1	2-Jul-21
73.174	<i>Oligia latruncula</i>	Tawny Marbled Minor	1	2-Jul-21
70.097	<i>Dysstroma truncata</i>	Common Marbled Carpet	2	2-Jul-21
73.084	<i>Bryophila domestica</i>	Marbled Beauty	3	2-Jul-21
73.261	<i>Polia nebulosa</i>	Grey Arches	1	2-Jul-21
70.144	<i>Pasiphila rectangulata</i>	Green Pug	1	2-Jul-21
73.016	<i>Autographa pulchrina</i>	Beautiful Golden Y	1	2-Jul-21
73.162	<i>Apamea monoglypha</i>	Dark Arches	6	2-Jul-21
73.317	<i>Agrotis exclamationis</i>	Heart and Dart	6	2-Jul-21
70.226	<i>Opisthograptis luteolata</i>	Brimstone Moth	4	2-Jul-21
70.283	<i>Campaea margaritaria</i>	Light Emerald	1	2-Jul-21

69.016	<i>Deilephila elpenor</i>	Elephant Hawk-moth	5	2-Jul-21
49.338	<i>Cydia pomonella</i>	Codling Moth	2	2-Jul-21
73.328	<i>Axylia putris</i>	Flame	2	29-Jun-21
	<i>Hoplodrina alsines/blanda</i>	Uncertain/Rustic agg.	2	29-Jun-21
73.012	<i>Diachrysia chrysitis</i>	Burnished Brass	4	29-Jun-21
70.265	<i>Alcis repandata</i>	Mottled Beauty	1	29-Jun-21
73.317	<i>Agrotis exclamationis</i>	Heart and Dart	3	29-Jun-21
73.174	<i>Oligia latruncula</i>	Tawny Marbled Minor	1	29-Jun-21
69.016	<i>Deilephila elpenor</i>	Elephant Hawk-moth	2	29-Jun-21
73.163	<i>Apamea lithoxylaea</i>	Light Arches	1	29-Jun-21
73.261	<i>Polia nebulosa</i>	Grey Arches	1	29-Jun-21
73.084	<i>Bryophila domestica</i>	Marbled Beauty	2	29-Jun-21
73.162	<i>Apamea monoglypha</i>	Dark Arches	3	29-Jun-21
73.342	<i>Noctua pronuba</i>	Large Yellow Underwing	1	29-Jun-21
73.274	<i>Mamestra brassicae</i>	Cabbage Moth	1	27-Jun-21
73.301	<i>Leucania comma</i>	Shoulder-striped Wainscot	2	27-Jun-21
73.293	<i>Mythimna impura</i>	Smoky Wainscot	1	27-Jun-21
73.162	<i>Apamea monoglypha</i>	Dark Arches	1	27-Jun-21
70.016	<i>Idaea aversata ab. remutata</i>	Riband Wave [non-banded form]	1	27-Jun-21
70.226	<i>Opisthograptis luteolata</i>	Brimstone Moth	1	27-Jun-21
73.317	<i>Agrotis exclamationis</i>	Heart and Dart	1	27-Jun-21
73.114	<i>Euplexia lucipara</i>	Small Angle Shades	1	27-Jun-21
73.301	<i>Leucania comma</i>	Shoulder-striped Wainscot	1	26-Jun-21
69.016	<i>Deilephila elpenor</i>	Elephant Hawk-moth	3	26-Jun-21
73.016	<i>Autographa pulchrina</i>	Beautiful Golden Y	1	26-Jun-21
73.342	<i>Noctua pronuba</i>	Large Yellow Underwing	2	26-Jun-21
73.001	<i>Abrostola tripartita</i>	Spectacle	2	26-Jun-21
73.162	<i>Apamea monoglypha</i>	Dark Arches	1	26-Jun-21
73.332	<i>Diarsia brunnea</i>	Purple Clay	1	26-Jun-21
70.049	<i>Xanthorhoe fluctuata</i>	Garden Carpet	1	16-Jun-21
73.084	<i>Bryophila domestica</i>	Marbled Beauty	1	16-Jun-21
74.003	<i>Nola cucullatella</i>	Short-cloaked Moth	1	16-Jun-21
49.039	<i>Epiphyas postvittana</i>	Light Brown Apple Moth	6	16-Jun-21
73.176	<i>Oligia fasciuncula</i>	Middle-barred Minor	1	16-Jun-21
70.24	<i>Odontopera bidentata</i>	Scalloped Hazel	2	16-Jun-21
73.001	<i>Abrostola tripartita</i>	Spectacle	1	16-Jun-21
73.317	<i>Agrotis exclamationis</i>	Heart and Dart	2	16-Jun-21

	<i>Acronicta tridens/psi</i>	Dark Dagger / Grey Dagger	1	16-Jun-21
9.004	<i>Lampronia morosa</i>	a moth	1	13-Jun-21
70.054	<i>Xanthorhoe montanata</i>	Silver-ground Carpet	1	13-Jun-21
70.226	<i>Opisthograptis luteolata</i>	Brimstone Moth	3	13-Jun-21
70.222	<i>Petrophora chlorosata</i>	Brown Silver-line	2	13-Jun-21
49.039	<i>Epiphyas postvittana</i>	Light Brown Apple Moth	5	13-Jun-21
70.183	<i>Eupithecia vulgata</i>	Common Pug	6	13-Jun-21
73.317	<i>Agrotis exclamationis</i>	Heart and Dart	6	13-Jun-21
73.176	<i>Oligia fasciuncula</i>	Middle-barred Minor	1	13-Jun-21
73.325	<i>Agrotis puta</i>	Shuttle-shaped Dart	1	13-Jun-21
73.001	<i>Abrostola tripartita</i>	Spectacle	1	13-Jun-21
70.097	<i>Dysstroma truncata</i>	Common Marbled Carpet	1	10-Jun-21
49.338	<i>Cydia pomonella</i>	Codling Moth	1	10-Jun-21
49.039	<i>Epiphyas postvittana</i>	Light Brown Apple Moth	1	10-Jun-21
73.156	<i>Apamea crenata</i>	Clouded-bordered Brindle	1	10-Jun-21
73.001	<i>Abrostola tripartita</i>	Spectacle	1	10-Jun-21
69.002	<i>Smerinthus ocellata</i>	Eyed Hawk-moth	1	8-Jun-21
70.144	<i>Pasiphila rectangulata</i>	Green Pug	1	8-Jun-21
49.039	<i>Epiphyas postvittana</i>	Light Brown Apple Moth	4	8-Jun-21
73.317	<i>Agrotis exclamationis</i>	Heart and Dart	1	8-Jun-21
70.226	<i>Opisthograptis luteolata</i>	Brimstone Moth	1	8-Jun-21
62.001	<i>Aphomia sociella</i>	Bee Moth	2	8-Jun-21
70.24	<i>Odontopera bidentata</i>	Scalloped Hazel	1	8-Jun-21
70.222	<i>Petrophora chlorosata</i>	Brown Silver-line	2	8-Jun-21
70.252	<i>Biston betularia</i>	Peppered Moth	1	8-Jun-21
70.156	<i>Eupithecia abbreviata</i>	Brindled Pug	1	8-Jun-21
73.159	<i>Apamea unanimitis</i>	Small Clouded Brindle	1	6-Jun-21
49.039	<i>Epiphyas postvittana</i>	Light Brown Apple Moth	3	6-Jun-21
70.252	<i>Biston betularia</i>	Peppered Moth	2	3-Jun-21
73.001	<i>Abrostola tripartita</i>	Spectacle	2	3-Jun-21
49.039	<i>Epiphyas postvittana</i>	Light Brown Apple Moth	6	3-Jun-21
73.328	<i>Axylia putris</i>	Flame	1	2-Jun-21
73.317	<i>Agrotis exclamationis</i>	Heart and Dart	1	2-Jun-21
49.039	<i>Epiphyas postvittana</i>	Light Brown Apple Moth	1	2-Jun-21
35.04	<i>Bryotropha terrella</i>	a moth	1	2-Jun-21
73.267	<i>Lacanobia oleracea</i>	Bright-line Brown-eye	1	30-May-21
70.24	<i>Odontopera bidentata</i>	Scalloped Hazel	1	30-May-21
70.049	<i>Xanthorhoe fluctuata thules</i>	Garden Carpet	1	30-May-21
70.049	<i>Xanthorhoe fluctuata</i>	Garden Carpet	1	30-May-21
49.039	<i>Epiphyas postvittana</i>	Light Brown Apple Moth	5	30-May-21

70.226	<i>Opisthograptis luteolata</i>	Brimstone Moth	1	30-May-21
62.001	<i>Aphomia sociella</i>	Bee Moth	1	30-May-21
70.156	<i>Eupithecia abbreviata</i>	Brindled Pug	1	28-May-21
62.001	<i>Aphomia sociella</i>	Bee Moth	1	28-May-21
70.24	<i>Odontopera bidentata</i>	Scalloped Hazel	1	28-May-21
49.039	<i>Epiphyas postvittana</i>	Light Brown Apple Moth	3	28-May-21
70.226	<i>Opisthograptis luteolata</i>	Brimstone Moth	1	28-May-21
49.039	<i>Epiphyas postvittana</i>	Light Brown Apple Moth	1	16-May-21
71.017	<i>Pheosia tremula</i>	Swallow Prominent	1	16-May-21
72.02	<i>Spilosoma lubricipeda</i>	White Ermine	1	16-May-21
73.325	<i>Agrotis puta</i>	Shuttle-shaped Dart	1	16-May-21
49.039	<i>Epiphyas postvittana</i>	Light Brown Apple Moth	1	13-May-21
28.009	<i>Endrosis sarcitrella</i>	White-shouldered House-moth	1	13-May-21
70.183	<i>Eupithecia vulgata</i>	Common Pug	1	13-May-21
73.245	<i>Orthosia cruda</i>	Small Quaker	2	20-Mar-21
70.245	<i>Alsophila aescularia</i>	March Moth	1	20-Mar-21
73.244	<i>Orthosia cerasi</i>	Common Quaker	15	20-Mar-21
73.25	<i>Anorthoa munda</i>	Twin-spotted Quaker	3	20-Mar-21
73.242	<i>Orthosia incerta</i>	Clouded Drab	10	20-Mar-21
73.245	<i>Orthosia cruda</i>	Small Quaker	20	20-Mar-21
73.359	<i>Xestia c-nigrum</i>	Setaceous Hebrew Character	4	20-Mar-21
70.247	<i>Phigalia pilosaria</i>	Pale Brindled Beauty	1	16-Mar-21
73.244	<i>Orthosia cerasi</i>	Common Quaker	1	16-Mar-21

	Moth Records 2021			
	P W Forster			
	Guisborough Woods			
	NZ 605138 (VC62)			
Code	Scientific Name	Vernacular Name	No.	Date
	<i>Hoplodrina alsines/blanda</i>	Uncertain/Rustic agg.	3	9-Jul-21
73.361	<i>Xestia triangulum</i>	Double Square-spot	2	9-Jul-21
73.332	<i>Diarsia brunnea</i>	Purple Clay	6	9-Jul-21
	<i>Acronicta tridens/psi</i>	Dark Dagger / Grey Dagger	1	9-Jul-21

73.012	<i>Diachrysia chrysitis</i>	Burnished Brass	1	9-Jul-21
73.338	<i>Lycophotia porphyrea</i>	True Lover's Knot	1	9-Jul-21
73.352	<i>Anaplectoides prasina</i>	Green Arches	2	9-Jul-21
72.045	<i>Eilema lurideola</i>	Common Footman	1	9-Jul-21
73.267	<i>Lacanobia oleracea</i>	Bright-line Brown-eye	1	9-Jul-21
72.055	<i>Herminia grisealis</i>	Small Fan-foot	1	9-Jul-21
73.261	<i>Polia nebulosa</i>	Grey Arches	2	9-Jul-21
73.271	<i>Ceramica pisi</i>	Broom Moth	1	9-Jul-21
70.265	<i>Alcis repandata</i>	Mottled Beauty	2	9-Jul-21
72.019	<i>Spilosoma lutea</i>	Buff Ermine	1	9-Jul-21
73.333	<i>Diarsia mendica</i>	Ingrailed Clay	5	9-Jul-21
49.109	<i>Agapeta hamana</i>	a moth	1	9-Jul-21
49.266	<i>Eucosma hohenwartiana</i>	a moth	1	9-Jul-21
63.037	<i>Udea olivalis</i>	a moth	1	9-Jul-21
49.004	<i>Ditula angustiorana</i>	Red-barred Tortrix	1	9-Jul-21
49.025	<i>Pandemis cerasana</i>	Barred Fruit-tree Tortrix	1	9-Jul-21
62.028	<i>Dioryctria abietella</i>	a moth	1	9-Jul-21
41.003	<i>Blastobasis lacticolella</i>	a moth	3	9-Jul-21
70.214	<i>Macaria liturata</i>	Tawny-barred Angle	1	9-Jul-21
65.008	<i>Thyatira batis</i>	Peach Blossom	1	9-Jul-21
71.021	<i>Ptilodon capucina</i>	Coxcomb Prominent	2	9-Jul-21
73.329	<i>Ochropleura plecta</i>	Flame Shoulder	1	9-Jul-21
70.277	<i>Cabera pusaria</i>	Common White Wave	1	9-Jul-21
70.252	<i>Biston betularia</i>	Peppered Moth	2	9-Jul-21
65.009	<i>Habrosyne pyritoides</i>	Buff Arches	4	9-Jul-21
73.174	<i>Oligia latruncula</i>	Tawny Marbled Minor	3	9-Jul-21
73.114	<i>Euplexia lucipara</i>	Small Angle Shades	1	9-Jul-21
73.016	<i>Autographa pulchrina</i>	Beautiful Golden Y	6	9-Jul-21
66.01	<i>Euthrix potatoria</i>	Drinker	2	9-Jul-21
73.162	<i>Apamea monoglypha</i>	Dark Arches	2	9-Jul-21
63.08	<i>Chrysoteuchia culmella</i>	Garden Grass-veneer	8	9-Jul-21
69.016	<i>Deilephila elpenor</i>	Elephant Hawk-moth	1	9-Jul-21

	Moth Records 2021			
	P W Forster			
	Marske Church Howle			
	NZ641229 (VC 62)			

Code	Scientific Name	Vernacular Name	No.	Date
49.109	<i>Agapeta hamana</i>	a moth	1	16-Jul-21
73.298	<i>Mythimna ferrago</i>	Clay	1	16-Jul-21
35.038	<i>Bryotropha domestica</i>	a moth	1	16-Jul-21
28.01	<i>Hofmannophila pseudopretella</i>	Brown House-moth	1	16-Jul-21
16.001	<i>Yponomeuta evonymella</i>	Bird-cherry Ermine	1	16-Jul-21
73.163	<i>Apamea lithoxylaea</i>	Light Arches	2	16-Jul-21
63.067	<i>Eudonia lacustrata</i>	a moth	1	16-Jul-21
70.205	<i>Abraxas grossulariata</i>	Magpie Moth	1	16-Jul-21
73.131	<i>Luperina testacea</i>	Flounced Rustic	1	16-Jul-21
	<i>Hoplodrina alsines/blanda</i>	Uncertain/Rustic agg.	1	16-Jul-21
70.252	<i>Biston betularia</i>	Peppered Moth	1	16-Jul-21
73.015	<i>Autographa gamma</i>	Silver Y	1	16-Jul-21
73.017	<i>Autographa jota</i>	Plain Golden Y	1	16-Jul-21
70.093	<i>Gandaritis pyraliata</i>	Barred Straw	2	16-Jul-21
73.084	<i>Bryophila domestica</i>	Marbled Beauty	1	16-Jul-21
73.322	<i>Agrotis vestigialis</i>	Archer's Dart	2	16-Jul-21
73.293	<i>Mythimna impura</i>	Smoky Wainscot	10	16-Jul-21
73.342	<i>Noctua pronuba</i>	Large Yellow Under-wing	3	16-Jul-21
72.024	<i>Phragmatobia fuliginosa</i>	Ruby Tiger	1	16-Jul-21
73.097	<i>Hoplodrina blanda</i>	Rustic	1	16-Jul-21
63.069	<i>Eudonia angustea</i>	a moth	1	16-Jul-21
65.009	<i>Habrosyne pyritoides</i>	Buff Arches	6	16-Jul-21
70.214	<i>Macaria liturata</i>	Tawny-barred Angle	2	16-Jul-21
70.207	<i>Lomaspilis marginata</i>	Clouded Border	1	16-Jul-21
63.02	<i>Anania perlucidalis</i>	a moth	1	16-Jul-21
63.08	<i>Chrysoteuchia culmella</i>	Garden Grass-veneer	20	16-Jul-21
66.01	<i>Euthrix potatoria</i>	Drinker	3	16-Jul-21
69.017	<i>Deilephila porcellus</i>	Small Elephant Hawk-moth	1	16-Jul-21
72.019	<i>Spilosoma lutea</i>	Buff Ermine	2	16-Jul-21
73.162	<i>Apamea monoglypha</i>	Dark Arches	3	16-Jul-21
72.003	<i>Hypena proboscidalis</i>	Snout	2	16-Jul-21
73.328	<i>Axylia putris</i>	Flame	2	16-Jul-21
73.174	<i>Oligia latruncula</i>	Tawny Marbled Minor	3	16-Jul-21
70.243	<i>Ourapteryx sambucaria</i>	Swallow-tailed Moth	2	16-Jul-21

	Moth Records 2021			
	P W Forster			
	Newton Mulgrave Castle			
	NZ8412			
Code	Scientific Name	Vernacular Name	No.	Date
73.123	<i>Hydraecia micacea</i>	Rosy Rustic	2	16-Sep-21
73.357	<i>Xestia xanthographa</i>	Square-spot Rustic	1	16-Sep-21
73.342	<i>Noctua pronuba</i>	Large Yellow Underwing	20	16-Sep-21
73.113	<i>Phlogophora meticulosa</i>	Angle Shades	1	16-Sep-21
73.121	<i>Gortyna flavago</i>	Frosted Orange	15	16-Sep-21
73.015	<i>Autographa gamma</i>	Silver Y	10	16-Sep-21
73.162	<i>Apamea monoglypha</i>	Dark Arches	2	16-Sep-21
73.345	<i>Noctua comes</i>	Lesser Yellow Underwing	1	16-Sep-21
73.062	<i>Amphipyra pyramidea</i>	Copper Underwing	1	16-Sep-21
73.193	<i>Omphaloscelis lunosa</i>	Lunar Underwing	40	16-Sep-21
73.359	<i>Xestia c-nigrum</i>	Setaceous Hebrew Character	1	16-Sep-21
72.078	<i>Catocala nupta</i>	Red Underwing	1	16-Sep-21
70.095	<i>Chloroclysta siterata</i>	Red-Green Carpet	2	16-Sep-21
70.081	<i>Thera obeliscata</i>	Grey Pine Carpet	2	16-Sep-21
73.343	<i>Noctua fimbriata</i>	Broad-bordered Yellow Underwing	1	7-Sep-21
73.342	<i>Noctua pronuba</i>	Large Yellow Underwing	8	7-Sep-21
73.345	<i>Noctua comes</i>	Lesser Yellow Underwing	6	7-Sep-21
	<i>Mesapamea secalis</i> agg.	Common Rustic agg.	4	7-Sep-21
41.003	<i>Blastobasis lacticolella</i>	a moth	6	7-Sep-21
	<i>Amphipyra pyramidea</i> agg.	Copper Underwing agg.	1	7-Sep-21
73.216	<i>Cosmia trapezina</i>	Dun-bar	2	7-Sep-21
73.162	<i>Apamea monoglypha</i>	Dark Arches	10	7-Sep-21
73.022	<i>Plusia festucae</i>	Gold Spot	1	7-Sep-21
72.045	<i>Eilema lurideola</i>	Common Footman	1	7-Sep-21
73.342	<i>Noctua pronuba</i>	Large Yellow Underwing	3	20-Aug-21
73.345	<i>Noctua comes</i>	Lesser Yellow Underwing	4	20-Aug-21
73.123	<i>Hydraecia micacea</i>	Rosy Rustic	1	20-Aug-21
49.109	<i>Agapeta hamana</i>	a moth	1	20-Aug-21

70.011	<i>Idaea dimidiata</i>	Single-dotted Wave	1	20-Aug-21
70.1	<i>Colostygia pectinataria</i>	Green Carpet	1	20-Aug-21
73.015	<i>Autographa gamma</i>	Silver Y	1	20-Aug-21
41.003	<i>Blastobasis lacticolella</i>	a moth	1	20-Aug-21
73.097	<i>Hoplodrina blanda</i>	Rustic	1	20-Aug-21
72.045	<i>Eilema lurideola</i>	Common Footman	1	20-Aug-21
63.089	<i>Agriphila tristella</i>	a moth	2	20-Aug-21
16.001	<i>Yponomeuta evonymella</i>	Bird-cherry Ermine	1	24-Jul-21
63.08	<i>Chrysoteuchia culmella</i>	Garden Grass-veneer	5	24-Jul-21
70.226	<i>Opisthocraptis luteolata</i>	Brimstone Moth	5	24-Jul-21
69.003	<i>Laothoe populi</i>	Poplar Hawk-moth	2	24-Jul-21
65.009	<i>Habrosyne pyritoides</i>	Buff Arches	2	24-Jul-21
63.089	<i>Agriphila tristella</i>	a moth	10	24-Jul-21
	<i>Acronicta tridens/psi</i>	Dark Dagger / Grey Dagger	1	24-Jul-21
70.252	<i>Biston betularia</i>	Peppered Moth	1	24-Jul-21
73.017	<i>Autographa jota</i>	Plain Golden Y	1	24-Jul-21
70.016	<i>Idaea aversata</i> ab. <i>re-mutata</i>	Riband Wave [non-banded form]	8	24-Jul-21
70.241	<i>Crocallis elinguaris</i>	Scalloped Oak	4	24-Jul-21
70.265	<i>Alcis repandata</i>	Mottled Beauty	8	24-Jul-21
70.243	<i>Ourapteryx sambucaria</i>	Swallow-tailed Moth	3	24-Jul-21
72.003	<i>Hypena proboscidalis</i>	Snout	3	24-Jul-21
70.016	<i>Idaea aversata</i>	Riband Wave	10	24-Jul-21
70.237	<i>Selenia dentaria</i>	Early Thorn	3	24-Jul-21
72.045	<i>Eilema lurideola</i>	Common Footman	6	24-Jul-21
70.013	<i>Idaea biselata</i>	Small Fan-footed Wave	1	24-Jul-21
63.034	<i>Udea prunalis</i>	a moth	2	24-Jul-21
63.037	<i>Udea olivalis</i>	a moth	1	24-Jul-21
70.074	<i>Hydriomena furcata</i>	July Highflier	3	24-Jul-21
41.003	<i>Blastobasis lacticolella</i>	a moth	3	24-Jul-21
73.329	<i>Ochropleura plecta</i>	Flame Shoulder	2	24-Jul-21
73.097	<i>Hoplodrina blanda</i>	Rustic	2	24-Jul-21
49.109	<i>Agapeta hamana</i>	a moth	1	24-Jul-21
70.133	<i>Perizoma alchemillata</i>	Small Rivulet	2	24-Jul-21
16.003	<i>Yponomeuta malinellus</i>	Apple Ermine	1	24-Jul-21
73.348	<i>Noctua janthe</i>	Lesser Broad-bordered Yellow Underwing	2	24-Jul-21
73.084	<i>Bryophila domestica</i>	Marbled Beauty	1	24-Jul-21

73.162	<i>Apamea monoglypha</i>	Dark Arches	20	24-Jul-21
49.026	<i>Pandemis heparana</i>	Dark Fruit-tree Tortrix	1	24-Jul-21
31.001	<i>Carcina quercana</i>	a moth	2	24-Jul-21
63.074	<i>Eudonia mercurella</i>	a moth	1	24-Jul-21
	<i>Oligia strigilis</i> agg.	Marbled Minor agg.	4	24-Jul-21
73.361	<i>Xestia triangulum</i>	Double Square-spot	3	24-Jul-21
73.342	<i>Noctua pronuba</i>	Large Yellow Underwing	35	24-Jul-21
65.008	<i>Thyatira batis</i>	Peach Blossom	2	24-Jul-21
73.016	<i>Autographa pulchrina</i>	Beautiful Golden Y	2	24-Jul-21
73.012	<i>Diachrysia chrysitis</i>	Burnished Brass	2	24-Jul-21
	<i>Mesapamea secalis</i> agg.	Common Rustic agg.	3	24-Jul-21
73.325	<i>Agrotis puta</i>	Shuttle-shaped Dart	1	24-Jul-21
	<i>Hoplodrina alsines/blanda</i>	Uncertain/Rustic agg.	3	24-Jul-21
70.016	<i>Idaea aversata</i>	Riband Wave	25	17-Jul-21
49.109	<i>Agapeta hamana</i>	a moth	1	17-Jul-21
73.353	<i>Xestia baja</i>	Dotted Clay	1	17-Jul-21
73.276	<i>Sideridis rivularis</i>	Campion	1	17-Jul-21
70.144	<i>Pasiphila rectangulata</i>	Green Pug	1	17-Jul-21
70.252	<i>Biston betularia</i>	Peppered Moth	1	17-Jul-21
72.053	<i>Herminia tarsipennalis</i>	Fan-foot	1	17-Jul-21
63.08	<i>Chrysoteuchia culmella</i>	Garden Grass-veneer	25	17-Jul-21
45.03	<i>Pterophorus pentadactyla</i>	White Plume	1	17-Jul-21
50.002	<i>Zeuzera pyrina</i>	Leopard Moth	1	17-Jul-21
73.017	<i>Autographa jota</i>	Plain Golden Y	1	17-Jul-21
	<i>Acronicta tridens/psi</i>	Dark Dagger / Grey Dagger	6	17-Jul-21
71.025	<i>Phalera bucephala</i>	Buff-tip	1	17-Jul-21
73.361	<i>Xestia triangulum</i>	Double Square-spot	40	17-Jul-21
69.002	<i>Smerinthus ocellata</i>	Eyed Hawk-moth	1	17-Jul-21
69.003	<i>Laothoe populi</i>	Poplar Hawk-moth	2	17-Jul-21
73.174	<i>Oligia latruncula</i>	Tawny Marbled Minor	5	17-Jul-21
73.001	<i>Abrostola tripartita</i>	Spectacle	2	17-Jul-21
73.342	<i>Noctua pronuba</i>	Large Yellow Underwing	80	17-Jul-21
	<i>Mesapamea secalis</i> agg.	Common Rustic agg.	16	17-Jul-21
70.011	<i>Idaea dimidiata</i>	Single-dotted Wave	1	17-Jul-21
71.021	<i>Ptilodon capucina</i>	Coxcomb Prominent	3	17-Jul-21
69.016	<i>Deilephila elpenor</i>	Elephant Hawk-moth	1	17-Jul-21
70.283	<i>Campaea margaritaria</i>	Light Emerald	8	17-Jul-21
70.258	<i>Peribatodes rhomboidaria</i>	Willow Beauty	3	17-Jul-21
72.003	<i>Hypena proboscidalis</i>	Snout	1	17-Jul-21
65.008	<i>Thyatira batis</i>	Peach Blossom	1	17-Jul-21

63.08	<i>Chrysoteuchia culmella</i>	Garden Grass-veneer	8	9-Jul-21
72.045	<i>Eilema lurideola</i>	Common Footman	1	9-Jul-21
73.084	<i>Bryophila domestica</i>	Marbled Beauty	1	9-Jul-21
70.013	<i>Idaea biselata</i>	Small Fan-footed Wave	1	9-Jul-21
73.342	<i>Noctua pronuba</i>	Large Yellow Underwing	1	9-Jul-21
65.009	<i>Habrosyne pyritoides</i>	Buff Arches	2	9-Jul-21
49.338	<i>Cydia pomonella</i>	Codling Moth	2	9-Jul-21
49.029	<i>Lozotaenia forsterana</i>	a moth	1	9-Jul-21
70.183	<i>Eupithecia vulgata</i>	Common Pug	1	9-Jul-21
73.333	<i>Diarsia mendica</i>	Ingrailed Clay	2	9-Jul-21
73.332	<i>Diarsia brunnea</i>	Purple Clay	2	9-Jul-21
49.024	<i>Pandemis corylana</i>	Chequered Fruit-tree Tortrix	1	9-Jul-21
69.003	<i>Laothoe populi</i>	Poplar Hawk-moth	1	30-Jun-21
73.332	<i>Diarsia brunnea</i>	Purple Clay	1	30-Jun-21
63.08	<i>Chrysoteuchia culmella</i>	Garden Grass-veneer	30	30-Jun-21
70.029	<i>Timandra comae</i>	Blood-Vein	1	30-Jun-21
73.267	<i>Lacanobia oleracea</i>	Bright-line Brown-eye	1	30-Jun-21
70.226	<i>Opisthograptis luteolata</i>	Brimstone Moth	1	30-Jun-21
	<i>Oligia strigilis</i> agg.	Marbled Minor agg.	1	30-Jun-21
73.147	<i>Photedes minima</i>	Small Dotted Buff	1	30-Jun-21
73.317	<i>Agrotis exclamationis</i>	Heart and Dart	5	30-Jun-21
70.054	<i>Xanthorhoe montanata</i>	Silver-ground Carpet	1	24-Jun-21
70.081	<i>Thera obeliscata</i>	Grey Pine Carpet	1	24-Jun-21
73.317	<i>Agrotis exclamationis</i>	Heart and Dart	1	24-Jun-21
72.002	<i>Rivula sericealis</i>	Straw Dot	1	24-Jun-21
70.1	<i>Colostygia pectinataria</i>	Green Carpet	1	24-Jun-21
73.158	<i>Apamea sordens</i>	Rustic Shoulder-knot	1	24-Jun-21
73.301	<i>Leucania comma</i>	Shoulder-striped Wainscot	3	24-Jun-21
70.284	<i>Hylaea fasciaria</i>	Barred Red	1	24-Jun-21
63.08	<i>Chrysoteuchia culmella</i>	Garden Grass-veneer	8	24-Jun-21
72.024	<i>Phragmatobia fuliginosa</i>	Ruby Tiger	1	15-Jun-21
72.015	<i>Calliteara pudibunda</i>	Pale Tussock	1	15-Jun-21
73.176	<i>Oligia fasciuncula</i>	Middle-barred Minor	1	15-Jun-21
49.039	<i>Epiphyas postvittana</i>	Light Brown Apple Moth	1	15-Jun-21
3.002	<i>Korscheltellus lupulina</i>	Common Swift	2	15-Jun-21
73.25	<i>Anorthoa munda</i>	Twin-spotted Quaker	2	16-Apr-21
73.249	<i>Orthosia gothica</i>	Hebrew Character	2	16-Apr-21

73.244	<i>Orthosia cerasi</i>	Common Quaker	20	2-Apr-21
73.245	<i>Orthosia cruda</i>	Small Quaker	8	2-Apr-21
70.247	<i>Phigalia pilosaria</i>	Pale Brindled Beauty	1	2-Apr-21
73.25	<i>Anorthoa munda</i>	Twin-spotted Quaker	4	2-Apr-21
73.242	<i>Orthosia incerta</i>	Clouded Drab	6	2-Apr-21
73.249	<i>Orthosia gothica</i>	Hebrew Character	13	2-Apr-21
70.101	<i>Colostygia multistrigaria</i>	Mottled Grey	1	20-Mar-21
70.245	<i>Alsophila aescularia</i>	March Moth	6	20-Mar-21
73.249	<i>Orthosia gothica</i>	Hebrew Character	20	20-Mar-21
70.251	<i>Biston strataria</i>	Oak Beauty	2	20-Mar-21
73.25	<i>Anorthoa munda</i>	Twin-spotted Quaker	25	20-Mar-21
73.069	<i>Xylocampa areola</i>	Early Grey	2	20-Mar-21
73.244	<i>Orthosia cerasi</i>	Common Quaker	10	20-Mar-21
73.242	<i>Orthosia incerta</i>	Clouded Drab	15	20-Mar-21
73.21	<i>Eupsilia transversa</i>	Satellite	3	20-Mar-21

	Moth Records 2021			
	P W Forster			
	South Gare Blast Pools			
	NZ5626			
Code	Scientific Name	Vernacular Name	No.	Date
73.357	<i>Xestia xanthographa</i>	Square-spot Rustic	2	12-Aug-21
63.038	<i>Pleuroptya ruralis</i>	Mother of Pearl	1	12-Aug-21
70.187	<i>Eupithecia icterata</i>	Tawny Speckled Pug	1	12-Aug-21
73.137	<i>Arenostola phragmitidis</i>	Fen Wainscot	5	12-Aug-21
70.15	<i>Eupithecia linariata</i>	Toadflax Pug	2	12-Aug-21
73.172	<i>Mesoligia furuncula</i>	Cloaked Minor	3	12-Aug-21
73.171	<i>Litoligia literosa</i>	Rosy Minor	2	12-Aug-21
73.015	<i>Autographa gamma</i>	Silver Y	1	12-Aug-21
73.358	<i>Xestia sexstrigata</i>	Six-striped Rustic	3	12-Aug-21
73.022	<i>Plusia festucae</i>	Gold Spot	2	12-Aug-21
63.058	<i>Evergestis extimalis</i>	a moth	2	12-Aug-21

73.151	<i>Globia sparganii</i>	Webb's Wainscot	3	12-Aug-21
	<i>Euxoa tritici/obelisca</i>	White-line Dart/Square-spot Dart	2	12-Aug-21
72.044	<i>Eilema griseola</i>	Dingy Footman	1	12-Aug-21
73.353	<i>Xestia baja</i>	Dotted Clay	1	12-Aug-21
63.115	<i>Acentria ephemerella</i>	Water Veneer	1	12-Aug-21
73.162	<i>Apamea monoglypha</i>	Dark Arches	3	12-Aug-21
73.12	<i>Eremobia ochroleuca</i>	Dusky Sallow	1	12-Aug-21
73.293	<i>Mythimna impura</i>	Smoky Wainscot	3	12-Aug-21
70.173	<i>Eupithecia centaureata</i>	Lime-speck Pug	1	12-Aug-21
73.345	<i>Noctua comes</i>	Lesser Yellow Underwing	2	12-Aug-21
73.084	<i>Bryophila domestica</i>	Marbled Beauty	1	12-Aug-21
72.045	<i>Eilema lurideola</i>	Common Footman	1	12-Aug-21
49.109	<i>Agapeta hamana</i>	a moth	1	12-Aug-21
73.325	<i>Agrotis puta</i>	Shuttle-shaped Dart	2	12-Aug-21
73.348	<i>Noctua janthe</i>	Lesser Broad-bordered Yellow Underwing	8	12-Aug-21
70.061	<i>Epirrhoe alternata alternata</i>	Common Carpet	1	12-Aug-21
73.346	<i>Noctua interjecta</i>	Least Yellow Underwing	4	12-Aug-21
70.258	<i>Peribatodes rhomboidaria</i>	Willow Beauty	1	12-Aug-21
66.01	<i>Euthrix potatoria</i>	Drinker	9	12-Aug-21
70.045	<i>Scotopteryx chenopodiata</i>	Shaded Broad-bar	1	12-Aug-21
72.013	<i>Euproctis similis</i>	Yellow-tail	1	12-Aug-21
73.131	<i>Luperina testacea</i>	Flounced Rustic	10	12-Aug-21
	<i>Mesapamea secalis agg.</i>	Common Rustic agg.	1	12-Aug-21
73.342	<i>Noctua pronuba</i>	Large Yellow Underwing	8	12-Aug-21
3.001	<i>Triodia sylvina</i>	Orange Swift	4	12-Aug-21
70.234	<i>Ennomos alniaria</i>	Canary-shouldered Thorn	1	12-Aug-21

Hyperchromic Orchids at Raisby Hill Grassland

Moir Wardhaugh

Having visited Raisby Hill Grassland Reserve on 7th July with the Field Club, a second visit was made on 25th July to admire the orchids and to look for snails.

Among the many Common Spotted Orchids, *Dactylorhiza fuchsii*, on the reserve, three orchids were found which appeared to be hyperchromic. These were smaller in size than the other Common Spotted Orchids on site, varying in height from 8 to 24 cm. The leaves of two of the plants were unspotted but redder than would be expected from a Common Spotted Orchid. The third had a few spots on its leaves and also had leaves much redder than expected.

The orchids were identified from photographs as Common Spotted Orchids var. *rhodochila*. It will be interesting to return to the site in 2022 to see if these orchids are still there and to look for others.

With many thanks to Alan Gendle for identifying the orchids and to Daphne Aplin for introducing us to the site.





Saltburn Gill: a beetle and a bug

AA Wardhaugh

I have been visiting Saltburn Gill occasionally since 1984, shortly after part of it became a nature reserve under the ownership of what is now the Tees Valley Wildlife Trust. These visits have been partly to record the land snails and slugs present in the wood but largely just to enjoy the rich diversity of wildlife in this ancient semi-natural woodland. Among other groups of invertebrates, a note has been kept of any beetles encountered one of which, seen recently, was a particular puzzle. This was a Heather Beetle (*Lochmaea suturalis*), found by the footpath through the wood, at rest on Pendulous sedge (*Carex pendula*) on 9th June 2020 (NZ6725.2096).



Lochmaea suturalis
(Length 5mm)
Saltburn Gill 09.06.2020

This species is described by Hubble (2012) as "widespread and may be abundant on heather (*Calluna vulgaris*) and rarely heaths (*Erica*), anywhere that the host plants are present. Breeding requires a damp moss or litter layer for egg-laying and pupation." It overwinters as an adult. Larvae feed on leaves and stems [of Ling *C. vulgaris*] and adults on young shoots (www.coleoptera.uk/species/lochmaea-suturalis). Finding it in Saltburn Gill, where there is seemingly no heather at all, was therefore something of a surprise. Possibly this individual had arrived here as a result of dispersal. These beetles can fly well and they are known to disperse when, for example, heather becomes depleted, or as a result of it being burnt.

To digress, I have found Heather Beetles elsewhere in places other than heathland. Two were found on Dog's Mercury (*Mercurialis perennis*) near Robin Hood's Bay (NZ9467.0227 on 16.04.2021) admittedly where there is much Ling in the vicinity. Following a visit to the Old Glebe near Wensley, on returning to our car one was found on a side window; no heathland nearby (SE1013.8952 on 13.05.2019). Finally, two were found at rest on a bright yellow blanket on a washing line in our garden (NZ5243.1518 on 23.04.2021), these along with a Harlequin Beetle (*Harmonia axyridis*) and a Pea Leaf Weevil (*Sitona lineatus*). Seemingly, this is a novel way to sample beetles as the blanket was newly washed and therefore devoid of fauna on being placed outside.

Returning to Saltburn Gill, a particularly interesting find was a single Heather Shield Bug (*Rhacognathus punctatus*) seen at rest on Dog's Mercury (NZ6723.2100 on 16.09.2021), very close to where the Heather Beetle was present in 2020. This is of significance because the Heather Shieldbug is a predator and feeds upon Heather Beetles (Nam 2004). It is described as "Largely confined to heathland and moorland, although occasionally recorded from dune slacks and commons in the absence of *Calluna*. Widely distributed throughout the UK but always scarce and found at low densities" (www.britishbugs.org.uk >Heteroptera >*Rhacognathus punctatus*).

It will be of interest to watch out for these two insects in Saltburn Gill in the future. Were they both vagrants or do they have an established presence here?



Rhacognathus punctatus
(Length 7.5 mm)
Saltburn Gill 16.09.2021

The Table below lists beetles recorded in Saltburn Gill, with the most recent date on which each species has been seen. Clearly, it represents just a few of the undoubtedly very many which are likely to be present.

Saltburn Gill: Beetles		
Family / Species	Grid Ref. (Date)	Notes
Cantharidae (Soldier Beetles)		
<i>Rhagonycha fulva</i> Black-tipped Soldier Beetle	NZ6742.2078 (01.08.2019)	Several, on herbage.
Carabidae (Ground Beetles)		
<i>Abax parallelepipedus</i>	NZ6735.2089 (01.08.2019)	One, under timber.
<i>Bembidion aeneum</i>	NZ6747.2083 (04.03.2020)	One, in Oak leaf litter.
<i>Bembidion guttula</i>	NZ6747.2083 (04.03.2020)	One, in Oak leaf litter.
<i>Leistus fulvibarbis</i>	NZ6726.2097 (12.11.2018)	One, under timber.
<i>Ocys harpaloides</i>	NZ6741.2077 (12.11.2018)	One, under timber.
Cerambycidae (Longhorn Beetles)		
<i>Grammoptera ruficornis</i>	NZ6714.2111 (10.06.2018)	Several, on flower-heads of Hogweed and Cow Parsley.
<i>Rhagium mordax</i>	NZ6720 (17.06.1990)	Two, at rest on an old Elm log.
Chrysomelidae (Leaf Beetles)		
<i>Altica</i> sp.	NZ6715.2110 (09.06.2020)	
<i>Lochmaea suturalis</i> Heather Beetle	NZ6725.2096 (09.06.2020)	One, on Pendulous Sedge.
Coccinellidae (Ladybird Beetles)		
<i>Chilocorus renipustulatus</i> Kidney-spot Ladybird	NZ6734.2087 (15.08.2018)	
<i>Coccinella septempunctata</i> Seven-spot Ladybird	NZ6715.2110 (09.06.2020)	

Saltburn Gill: Beetles		
<i>Harmonia axyridis</i> Harlequin Ladybird	NZ6715.2110 (09.06.2020)	
Curculionidae (Weevil Beetles)		
<i>Ceutorhynchus erysimi</i>	NZ6743.2080 (12.11.2018)	One, in mixed deciduous leaf litter.
Elateridae (Click Beetles)		
<i>Denticollis linearis</i>	NZ6720.2108 (09.06.2020)	One, female, on Stinging Nettle.
Geotrupidae (Dor Beetles)		
<i>Geotrupes stercorarius</i>	NZ6703.2124 (01.08.2019)	One, on footpath.
Lucanidae (Stag Beetles)		
<i>Sinodendron cylindricum</i> Rhinoceros Beetle	NZ6720 (20.06.1990)	One, on an old Oak trunk.

For about 30 years, beginning in the late 19th century, M L Thompson wrote a series of reports on the Coleoptera of Cleveland which were published in the Proceedings of the Cleveland Naturalists' Field Club. These include many interesting records for the Saltburn area but unfortunately the locality is generally listed as 'Saltburn' or 'Saltburn Woods' which makes comparison with the above records difficult given that there are several other woods in the area in addition to Saltburn Gill.

A survey of the ground beetles (Carabidae) of Saltburn Gill was carried out by Alex Weir during which 36 species were located with 17 named in an account by Fishpool (1993). Of these, just two species were found during the recording described above; *Abax parallelepipedus* and *Bembidion guttula*.

References

- Fishpool, M. (1993) *Conservation Matters. Cleveland Wildlife Trust Members' Newsletter*. October 1993.
- Hubble, D. (2012) *Keys to the adults of seed and leaf beetles of Britain and Ireland*. FSC Publications, Shrewsbury.
- Nam, B. (2004) *Guide to Shieldbugs of the British Isles*. FSC Publications, Shrewsbury.

Field Meetings 2022

I am pleased that the easing of restrictions following the Covid 19 pandemic has at last allowed us to provide a full programme of field outings once again. We were only able to stage a limited programme in the summer of 2021, with a much later start date than usual. I look forward to seeing many of our regular members again this coming summer and also welcoming any new members.

This leaflet expands on the summary information provided on the Club membership card.

In spring and summer there are visits to explore the natural history of a particular area as set out in this leaflet. During the winter months there is a series of meetings with illustrated talks by both Club members and visiting speakers.

The annual subscription is currently only £8.

I hope that you will find outings to your liking from this varied programme. Suggestions for future outings are always welcomed. It is hoped members will share transport, where possible, to ease parking problems and be prepared to offer lifts to members without cars.

Mark Stokeld (President)

Wednesday, 20th April, 10:30 am, leader Neil Baker ☎ 01325 361547

GR NZ862125. **Mulgrave Woods.** Meet at the entrance to Mulgrave Woods, by the road bridge over East Row Beck in Sandsend. An easy walk of about 5 miles through mixed woodland.

Saturday, 30th April, 10:30am, leader Tony Wardhaugh ☎ 01642 322935

GR SE579851. **Rievaulx Terrace.** Meet outside the entrance to Rievaulx Terrace. Travelling south towards Helmsley on the B1257, access is immediately after the turning to Rievaulx village and abbey (do not drive down the bank!). Parking is on the left side of the driveway. This is a National Trust property, the entrance fee for nonmembers being approximately £6. There are toilet facilities on site but no café. A short and level walk through woodland and by the Terrace Bank with spectacular views down to Rievaulx Abbey and beyond. There should be a good variety of spring flowers to enjoy. For more background about Rievaulx Terrace see the Field Club Proceedings 2021 pages 25 - 32.

Wednesday, 4th May, 10:30 am, leaders Mark and Hazel Stokeld ☎ 01642 783819

GR SE249987. **Bolton-on-Swale.** Meet in the YWT car park. Access is by a bumpy track off the B6271 just south of the village. Bolton-on-Swale Lake Nature Reserve was created as a result of sand and gravel quarrying. It is one of the largest areas of open water in this part of North Yorkshire.

Wednesday, 11th May, 10:30 am, leader Daphne Aplin ☎ 01642 884719

GR NZ483363. **Hart to Haswell Walkway.** Meet at the Walkway entrance. There is roadside parking on the nearby Ocean Road. A pleasant and easy walk, mostly on the level.

Wednesday, 18th May, 10:30 am, leader Eric Gendle ☎ 01642 281235

GR SE571844. **Ashberry Hill.** Park at Ashberry Farm, either at the roadside at the farm or at the triangle just before the bridge. A gentle walk of about 3 miles on roads and footpaths through Ashberry Wood, with some gentle climbing.

Wednesday, 25th May, 10:30 am, leader David Laing ☎ 01642 316101

GR NZ454228. **Billingham Beck Valley Country Park.** Meet in the visitor centre car park. A leisurely full day to explore different parts of this interesting wetland area.

Wednesday, 1st June, 6:30 pm, leader Neil Baker ☎ 01325 361547

GR NZ462193. **Portrack Marsh.** Meet in the large free car park on the Stockton side of the Tees Barrage. We will take a short leisurely walk around the Portrack Marsh nature reserve where there is plenty of botanical interest.

Wednesday, 8th June, 10:30 am, leader Jo Scott ☎ 01642 897843

GR NZ344287. **Hardwick Country Park, Sedgfield.** Meet in the car park. Parking fees are £2 for 2 hours or £3 all day. A walk of about 5 miles on field tracks between Hardwick Country Park and Bishop Middleham.

Wednesday, 15th June, 10:30 am, leader Jo Scott ☎ 01642 897843

GR NZ556277. **South Gare.** Meet at the Coastguard Station. The morning will be spent looking along the strand line and exploring the rockpools. After lunch we will look for birds and flowers among the dunes and blast furnace slag. This is a joint event with Darlington Naturalists.

Wednesday, 22nd June, 13:30 and 18:30, leader Neil Baker ☎ 01325 361547

GR SE783894. **Cropton Forest.** Meet at the Cawthorne Roman Camp car park. The main purpose of this field outing is a repeat visit to the Cropton Beaver Project in the evening, which proved very popular last year. There is a strict limit on the number of places available, so please apply for a reserved place as soon as possible. There will be an optional walk in the local area in the afternoon. We will meet in the car park at 13:30 for the afternoon walk and again at 18:30 for the evening event. We will drive to a different location for an accompanied visit to the Beaver Project. Details of this secret location will be advised separately. Members are welcome to start their day at any one of the two meeting times, whichever one suits them best.

Saturday, 25th June, 10:30 am, leader Andy Astbury ☎ 07596 263655

GR NZ592110. **Captain Cook's Monument and Percy Cross.** Meet in the car parking area at Gribdale Gate. An easy moorland walk of about 6 miles, which can be shortened to 4 miles if required by avoiding dropping into Kildale. We will go out by the Cleveland Way over Easby Moor and return by Great Ayton Moor.

Wednesday, 29th June, 10:30 am, leader Eric Gendle ☎ 01642 281235

GR SE514173. **Brockadale.** Meet in the reserve car park. Brockadale is a YWT reserve on limestone grassland with north and south facing slopes, mixed woodland, streamside and wetland areas and rocky limestone cliffs. An easy walk with a few gentle climbs. There is a rich flora plus Marbled White, Dark Green Fritillary, Gatekeeper and Brimstone butterflies and Banded Demoiselle. To get there, take the B6474 Wentbridge Road off the A1 J40 south of the M62 right at junction signed Kirk Smeaton then towards Little Smeaton and a sharp right turn up a minor lane to the car park.

Wednesday, 13th July, 10:30 am, leader Daphne Aplin ☎ 01642 884719

GR NZ556277. **South Gare.** Meet at the Coastguard Station. An easy walk in this interesting area which is good for both plantlife and butterflies.

Wednesday, 20th July, 10:30 am, leaders Mark and Hazel Stokeld

☎ 01642 783819

GR SE857982. **Fen Bog.** Meet in the small parking area near Eller Beck Bridge. Fen Bog is a moorland nature reserve which combines stunning views of the North York Moors with a terrific range of plants, insects and upland birds. We will explore the reserve at a leisurely pace.

Sunday, 24th July, 10:30 am, leader Andrew Ferguson ☎ 01642 311831

GR NZ863126. **Sandsend.** Meet in the small car park. An easy walk along the Cleveland Way coastal path with an emphasis on looking for butterflies. There are a few easy climbs.

Wednesday, 27th July, 6:30 pm, leader Eric Gendle ☎ 01642 281235

GR NZ526087. **Stokesley.** Meet in College Square car park on the High Street. An easy walk round the Leven Diversion Channel, which has some interesting flora.

Saturday, 30th July, 10:30 am, leader Jo Scott ☎ 01642 897843

GR NZ668216. **Saltburn Rockpools.** Meet in the Cat Nab car park. We will explore the rock-pools on this interesting stretch of shore. This is a joint event with Darlington Naturalists.

Wednesday, 10th August, 10:30 am, leader Neil Baker ☎ 01325 361547

GR NY906380. **Slitt Wood and West Rigg Geotrail.** Meet in the layby opposite the caravan site in Westgate. A circular walk of about 3 miles. There is some rough walking so strong footwear is advised. The route reveals much about the area's geology and links to its industrial past. Many different plants and birds may also be spotted at various times of year.

Wednesday, 17th August, 11:00 am, leader Alan Simkins ☎ 01642 477484

GR SE684990. **Rosedale.** Meet in the parking area off the Castleton to Hutton le Hole road just south of the Lion Inn, opposite the minor road down to Church Houses. A walk along the disused railway line looking at the geology linked to the Land of Iron project. This is a joint meeting with the Tees Valley RIGS Group.

Saturday, 20th August, 10:30 am, leader Andy Astbury ☎ 07596 263655

GR SE549790. **Byland Abbey and Cockerdale.** Meet in the small car park near the abbey. An easy walk of about 6 miles through woodland and unspoilt countryside. There are various options for shortening the walk if required.

Wednesday, 14th September, 10:30 am, contact Neil Baker ☎ 01325 361547

GR SE985829. **Wykeham Lakes.** Meet in the small parking area on the left as you enter the lakes complex. We will explore the fishing lakes and the waterpark with particular emphasis on looking for the recent coloniser Willow Emerald damselfly. This is a joint meeting with the Yorkshire Dragonfly Group and we will be led by Keith Gittens, an acknowledged expert.

Sunday, 2nd October, 10:30am, leader Alan Simkins ☎ 01642 477484

GR NZ603136. **Guisborough Woods.** Meet at the grid reference. Drive to the end of the public road at Hutton village, go through the gate and up the forest track for about 400 yards, turning sharp left on the track and park on the broad level area about 100 yards further on the left. This is a fungus foray held jointly with the North East Fungus Study Group.

DATES FOR WINTER MEETINGS 2022-2023

Sep 19. Oct 17. Nov 21. Dec 19. Jan 16. Feb 20. Mar 20.



CLEVELAND NATURALISTS FIELD CLUB

NEWSLETTER - March 2021

Fingers crossed that the release of lockdown goes according to plan! We are putting together a summer programme from May 17th when we are allowed to meet up to 30 people. Neil is currently putting this together and it will be with you shortly with details of any Covid related mitigations that still stand. I know that I for one am feeling somewhat nervous of getting together freely with a group of people, most of us will have been vaccinated and we will be taking things cautiously. We will be outside, and we are all sensible.

So this might be my last newsletter. I have enjoyed doing them, and thanks to all the contributors, I hope that they have kept your interest in the Club alive and that we can pick up normal service soon. The Committee have a few things to resolve and we will be meeting (under the rule of 6) soon after the end of March to discuss the way forward. We will be in touch with you all after that.

Jo Scott (President)

Two Unusual Beetle larvae.

Like a lot of people I am very fond of Ladybirds. Just to see one scurrying around makes me smile. Counting up I have probably seen about 11 Conspicuous Ladybird species but my aim is to see one of the Inconspicuous species. I'm sure you will be delighted to know that I have "very nearly" achieved that ambition. How only "very nearly"? I'll explain. In November, 2018 I saw a tiny purple larva grazing on Lichen on an Ash tree in Cowpen Bewley Woodland Park but unfortunately at the time I couldn't get it identified. During lockdown, convinced that it was a Beetle, I had the time and the inclination to ask a Beetle Group for help! Richard Comont kindly identified it as *Rhyzobius lophanthae* (scale-eating Ladybird). Unsure of the distribution I contacted Helen Roy who sent the following:-

"That is very exciting! What an exquisite find. We will check our records but I expect it to be a first record for County Durham. More soon.

"Just to confirm that your exciting record is very northerly! Many thanks again for sharing it with us all. Very best wishes, Helen"

Needless to say I will be continuing my search for an Adult!

Again at Cowpen I found the second larva last month (February) under the bark of a Silver Birch tree that had been cut down recently. I actually thought it was a type of Rove Beetle but, again on enquiry, Ryan Mitchell identified it as a Snakefly-Raphidioptera larva. The Adults are certainly rather strange looking. They have an elongated prothorax which I suppose gives them their name! I will be looking for one of these as well so plenty to keep me occupied!



**Daphne
Aplin**

Galls on Oak

Something to look out for when you are out and about. Galls are formed when mites or insects lay their eggs on the leaves or buds of various plants. As the larvae develop they cause a chemical reaction in the plant material causing them to develop abnormal growths. The larvae use these galls as food and shelter. Fungal spores can also cause gall development.

There are a number of galls on oak trees which are easy to spot. The examples below are all caused by gall wasps. Check under the leaves as well as the top and twigs.



Andricus curvator



Marble Gall – *Andricus kollari*



Cola nut Gall – *Andricus lignicolus*.



Artichoke Gall – *Andricus foecundatrix*



Cherry Gall – *Cynips quercusfolii*



Silk button Gall – *Neuroterus numismalis*.



Spangle Gall – *Neuroterus quercusbaccarum*



Oak Apple – *Biorhiza pallida*

Ref: Britains Plant Galls. Michael Chinery

Jo Scott

YNU Zoom Meeting 11th February 19.30 hrs.

Eric forwarded me an invitation from the YNU (Yorkshire Naturalists Union of which we are an affiliate member) to attend a Zoom meeting entitled 'The Brown Argus and its movement North.'. As the subject was one of interest I thought I would avail myself of the opportunity so I asked for a link to the meeting and duly took part.

The meeting was very informative and gave an updated review of the Brown Argus's spread northwards from south of the NY Moors to north Durham. It was backed up with survey work and the inevitable DNA data. The DNA analysis confirmed that there are only two species of the argus namely the Brown Argus and the Northern Brown Argus. Unfortunately it is very difficult to separate the species in the field as the diagnostic features differentiating the two species are very variable. The Brown Argus can be double brooded so if you find a fresh specimen in August you can be sure it is a BA. The foodplants favoured by the Brown Argus for their egg laying are more variable.

There were about 70 participants at the meeting. The only requirement to participate in the meeting is the use of a smart phone, tablet or iPad or a PC/Mac. All of these have inbuilt webcam and microphone with the exception of old PCs which may need an external speakers, microphone and webcam. You only need the link to the meeting (which will be sent to you once you have accepted the invitation) which when clicked on will take you to either your web-browser or if you have downloaded the Zoom app directly to it. You need to make sure that you have a suitable background behind you when attending the meeting in order not to embarrass yourself!

I gave a Zoom Powerpoint presentation/talk to the Guisborough Forum recently and that went off well. If this pandemic drags on Zoom meetings might be the way to keep the club active next autumn.

Mark Stokeld

EASTFIELD FARM - MOTHS 2020

Eastfield Farm 21/5 2x Brimstones, Lesser Swallow Prominent, Pale Tussock, Common Pug, Mottled Pug, Brindled Pug

28/5 Brimstone x 2, Red-Green Carpet, Scalloped Hazel, Pale Tussock, Green Silver Lines, Clouded Silver, Clouded Bordered Brindle, Common Marbled Carpet, plus pugs

2/6 Common Swift x 6, Brimstone x 4, Light Emerald, Clouded Bordered Brindle, Pale Tussock x3, Scorched Carpet, Silver Ground Carpet x 8, Clouded Silver, Clouded Magpie, Rustic Shoulder Knot, White Pinion Spotted, Middle-barred Minor

17/6 Barred Fruit Tree Tortrix, Large Yellow Underwing, Green Carpet, White Ermine, Buff Ermine, Common Wave, Riband Wave, Mottled Beauty, Ingrailed Clay, Pale Shouldered Brocade, Purple Clay, Light Emerald x 2, Brimstone, Silver Ground Carpet x 6

25/6 Common Emerald x 20, Large Emerald, Dark Arches x 4,, Flame Shoulder x 3, Double Square Spot , Brimstone x 6, Shuttle Shaped Dart, Silver Ground Carpet, White Ermine, Coxcomb Prominent x 3, Clay, Mottled Beauty x 6, Bright Line Brown Eye, Middle barred Minor x3, Ingrailed Clay, Eucosmahohenwartiana, Hedyanubiferana, Marbled minor agg



Lesser Swallow Prominent

16/7 Old Lady, Common Footman x 12, Light Emerald x 9, Spinach x 3, Dark Arches, Scalloped Oak x 3, Large Yellow Underwing x 5, Lesser Yellow Underwing x 4, Snout, Common Emerald x 3, Shaded Broad Bar, Poplar Hawk Moth, Udeaprunalis, Large Twin Spot Carpet, Mottled Beauty, Eudoniamercuralis, Eudonialacustrata, Uncertain, Dotted Clay, Scopariaambigualis, Dark Arches, Small Dotted Buff, Single Dotted Wave

24/ 7 Antler, Scalloped Oak x 6, Brimstone x 10, Magpie, Early Thorn, Barred Yellow, Scopariaambigualis, Dunbar, Small Fan Footed Wave, Uncertain, Double Square Spot, Carcinaquercana, Drinker, July Highflier x2, Large Yellow Underwing x 20, Smoky Wainscot, Eudoniamercuralis

9/8. Brimstone x8, Common Swift x3, Dunbar x 6, Orange Swift, Dark Arches x 8, Large Yellow Underwing x10, Common Carpet x 3, Udealutealis, Purple Thorn, Small Dotted Buff , Slender Pug, Common Rustic agg, Antler, Orange Underwing, AgriphilaTristella, , Eudoniamercurella. Square Spot Rustic

18/8 Dunbar x 6, Large Yellow Underwing x 50, Common Marbled Carpet x 4, Mouse moth, Gold Spot, Magpie, Brimstone, Canary Shouldered Thorn, Square Spot Rustic c x 4, Rosy Rustic x 4, Common Rustic, Flounced Rustic, Dark Arches, Double Square Spot, Single Dotted Wave, Eudoniamercurella, Agriphilatristella



Canary Shouldered Thorn

15/9 Dunbar x 3, Strange Yellow Underwing, Green Carpet, Red-Green Carpet, Silver Ground Carpet, Centre Barred Sallow, Pink-Barred Sallow, Flounced Rustic?, Snout, Setaceous Hebrew Character, Agonopterixarenella

19/9 Lunar Underwing x 4, Canary Shouldered Thorn x 3, Marbled Carpet x , Dark Marbled Carpet x 2, Green Carpet x 4, Rosy Rustic x 2, Flame Carpet, Square Spot Rustic x2 , Agonopterixarenella

16/10 epirittaagg 60+, Chestnut x 3, Marbled Carpet x 4, Green Brindled Crescent x 6, Copper Underwing, Figure of eight x 4, Satellite x3, Mottled Umber, Feathered Thorn x 4, Red-Green Carpet, Yellow lined Quaker

8/11 Satellite x 2, Scarce Umber x 3, Yellow Lined Quaker

18/11 December moth x 3, Scarce Umber x 4, Feathered Thorn, Winter Moth

Eric Gendle

Thrushes in the Garden



Fieldfare -

Mistle Thrush



Redwing

Peter Waterton



Song Thrush

Some more photographs from Andy Ferguson's trip to Scotland



Eggar Moth



Gold Swift Moth



Birds Nest Orchid



Winter Green



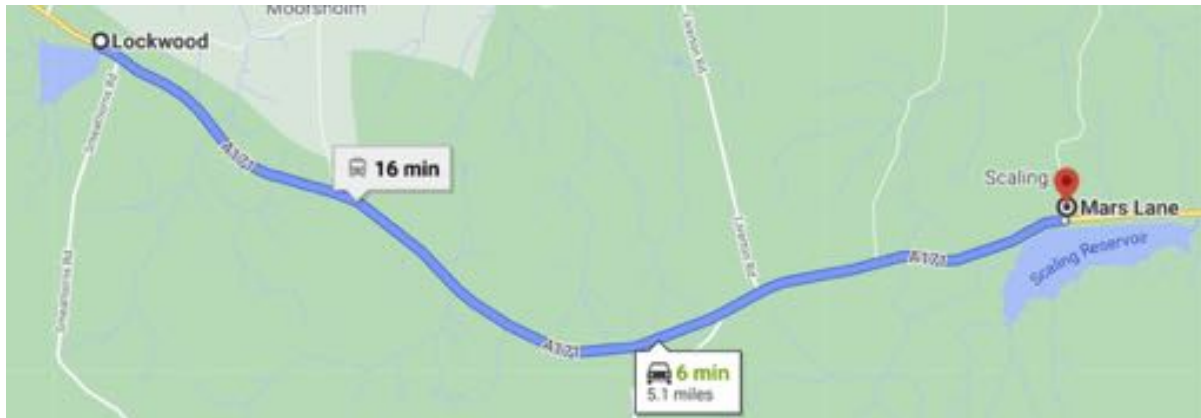
Peppered Moth



Lesser Butterfly Orchid

Barn Owls 2020 -2021 Observations

From The 6th of January to 31-01-21 2021, I have spent most mornings and evenings observing the Barn Owls from Lockwood beck to Scaling Dam on the moor rd.



I have on the 5.1 Mile stretch counted in one morning, six in total. It has been an extraordinary year for Barn owls with siting's at Magrove Park 2, South Gare 1, Guisborough fields below the woods 2, Pinchinthorpe 1, and Skelton Fields near Asda 2. These are my observations but I have talked to local Birdwatchers who have also had siting's around their local patch.

One of the owls is ringed, presumably a pulli from one of the many nest boxes now erected in farm Buildings along the 5.1 miles stretch , I have noticed the ring, but can only read part of the number and have seen the bird at Liverton Mine turn off, also the Lockwood site , ringed on the left leg .

According to the “Guardian Newspaper “, up to 80% of the birds now use man made nest boxes, this would probably account for the increase in numbers. See Below Figures of ringed pulli from the South Cleveland Ringing Group from 2006 to 2020 a definite upward trend.

It will be interesting to see if the expanding population can survive on the resident rodent population and with the milder weather over years this can only be a benefit to the owl's survival.

2006 5 2011 10 2016 38

2007 7 2012 21 2017 38

2008 19 2013 7 2018 89

2009 8 2014 42 2019 84

2010 18 2015 41 2020 86 Total 513

30-01-21



30-01-21



14-01-21



-09-01-21



Paul Forster

Photographs from Mark Stokeld



Forest Lane 09-01-21



Razorbill 26-01-21



Roe Deer 29-01-21



Sanderling 26-01-21



Snowbuntings 26-01-21



Yellowhammer - 07-01-21



In Praise of Spring



Spring is here bringing hope and cheer,
Spring! a special time of year!

Lambs skip# out on hills, fields and dales,
Ladybirds creep on garden rails.
Bees and butterflies on the wing
And blackbird's song must tell of spring.
Bright blossom blooms on hedge and tree,
Shining colour for all to see.
Birds are busy building nests,
Robins, tits and bright goldcrests.
Flowers sparkle in the sun,
For longer daylight has begun.
Pansy, primula, daffy too,
A blaze of colour for me and you.
Welcome spring and give a cheer
In grateful thanks that spring is here.



Pictures kindly donated by Eric

Maureen Gendle